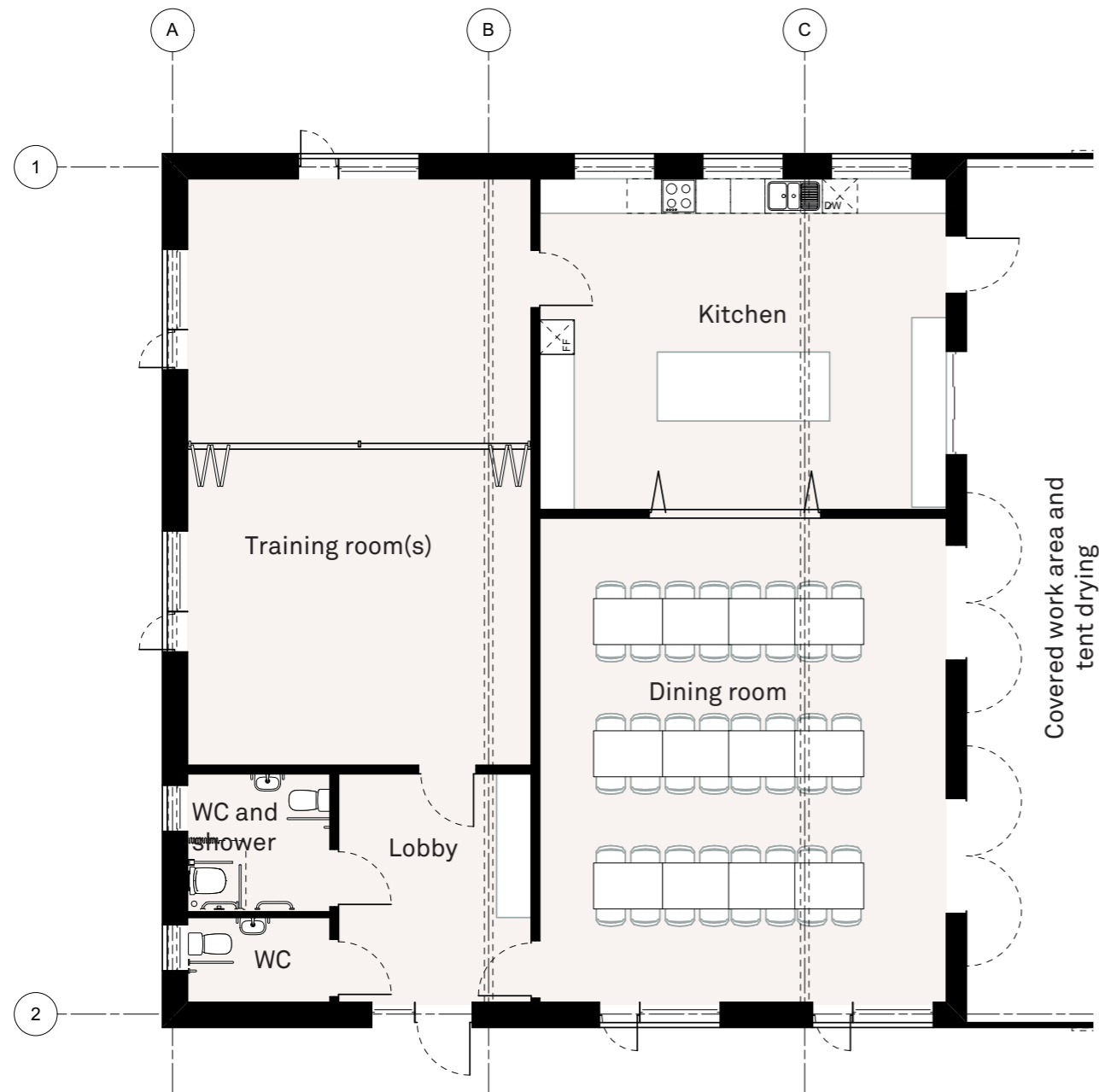
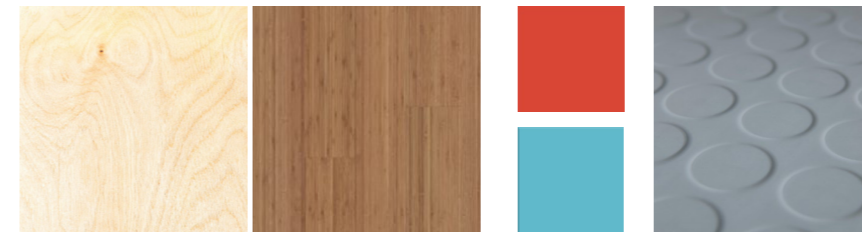


Fixtures, fittings, and finishes: Social areas

Space	Internal finishes: walls and ceiling	Internal finishes: floor	Lighting	Fittings (included in tender)	Electric points	Furniture (by FSC)
Dining room	Spruce faced plywood lining	Engineered timber	LED pendant lights		Plug sockets for vacuum cleaner	Tables and seating
Kitchen	Spruce faced plywood lining	Nora rubber flooring, grey	Suspended LED strip lights	Oven and electric hob Cooker hood Fridge/freezer Dishwasher	Plug sockets for worktop appliances	Kitchen units and shelving
Training room	Spruce faced plywood lining	Engineered timber	LED pendant lights	Sliding folding wall divider	Plug sockets for vacuum cleaner	
Lobby	Spruce faced plywood lining	Nora rubber flooring, grey	Suspended LED strip lights			Coat and shoe racks
WC and shower	Coloured square format tiles	Nora rubber flooring, grey		2 no. accessible WC suite 1 no. accessible shower facilities		



Internal finishes:



Dry areas:
Plywood internal lining and
timber flooring

Wet areas:
Coloured square format
tiles and rubber flooring

Lighting:



Suspended LED ceiling lights

Questions:

Any comments on the proposed specification given in the table?

How should the kitchen best be laid out? What and how many appliances are needed?

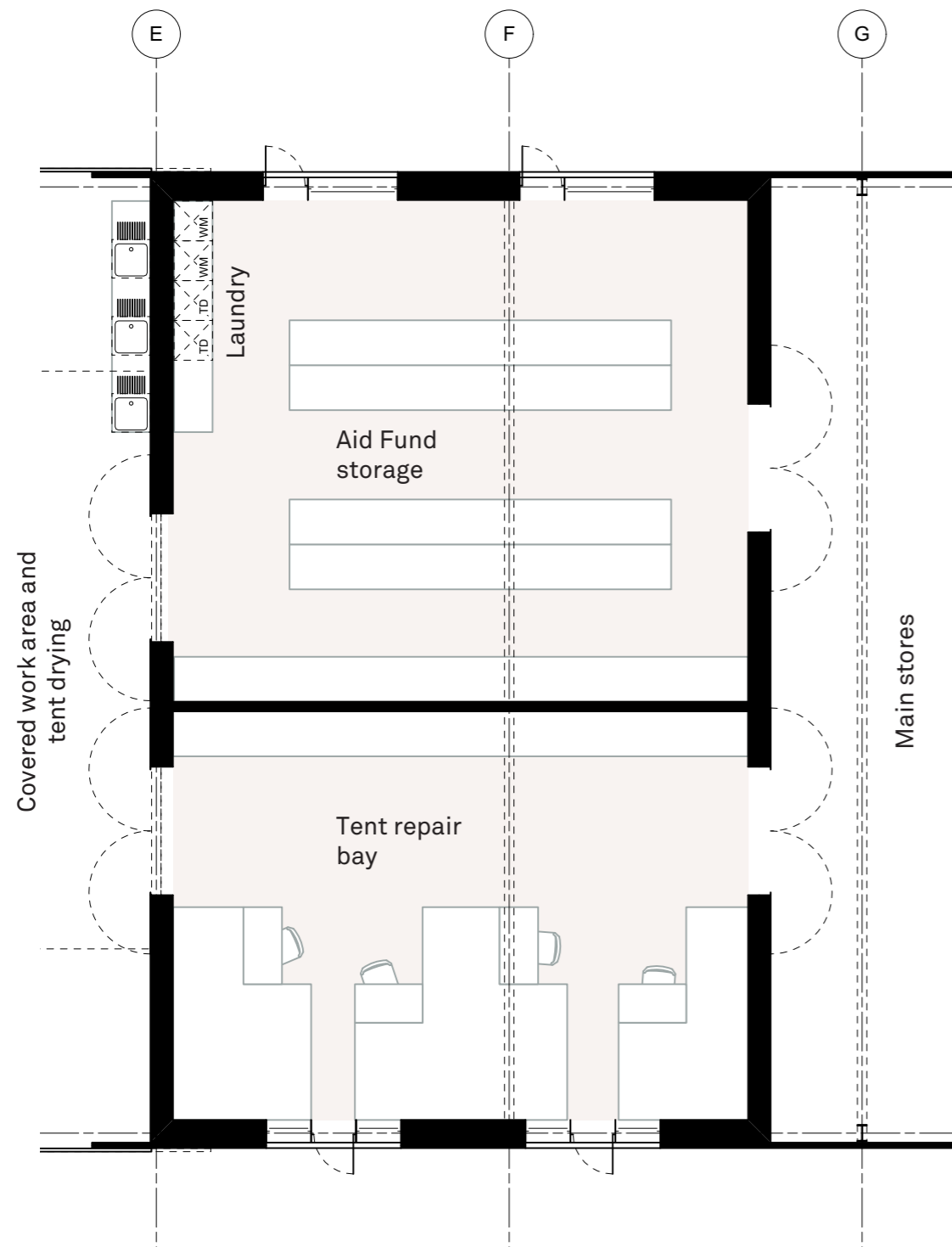
What openings are needed between the rooms? Should the kitchen have a sliding door (as shown) to open it up to the dining area or a single door and service hatch?

Should the WCs have tiles or shower boards (less grout to clean with the boards, more colour options in tile!)

If tile, what colours should we specify?

Fixtures, fittings, and finishes: Insulated work areas

Space	Internal finishes: walls and ceiling	Internal finishes: floor	Lighting	Fittings (included in tender)	Electric points	Furniture (by FSC)
Tent repair bay	Spruce faced plywood lining	Power-floated finish to screed floor	Suspended LED ceiling lights		Plug sockets for sewing machines, vacuum cleaners, task lighting	Bespoke sewing tables Storage shelving
Aid fund storage	Spruce faced plywood lining	Power-floated finish to screed floor	Suspended LED ceiling lights	2 no. washing machines 2 no. tumble dryers	Plug sockets for vacuum cleaner	Storage shelving



Internal finishes:



Plywood internal lining and power-floated screed floor

Lighting:



Suspended LED ceiling lights

Questions:

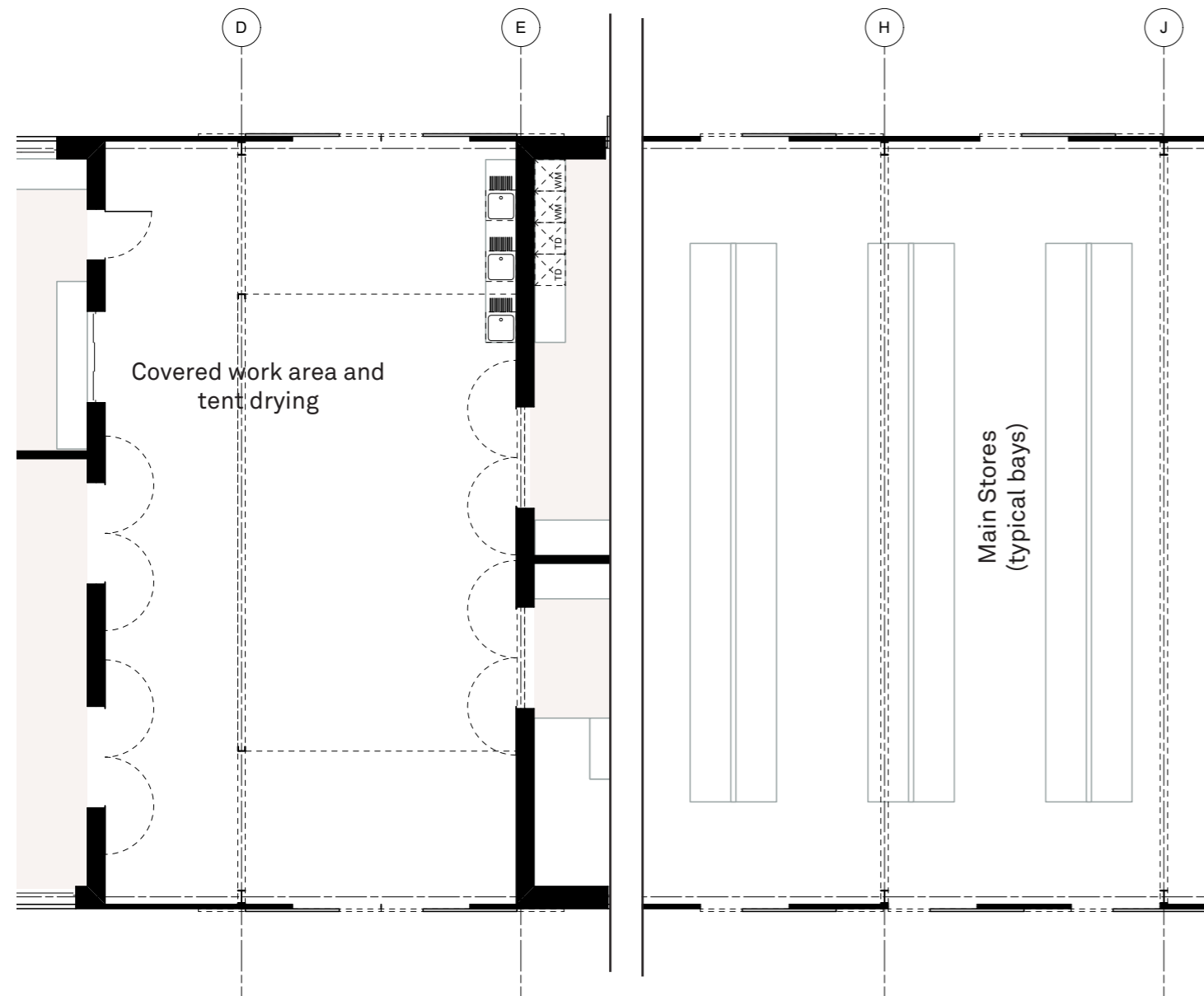
Any comments on the proposed specifications given in the table?

How should the tent repair bay be laid out?

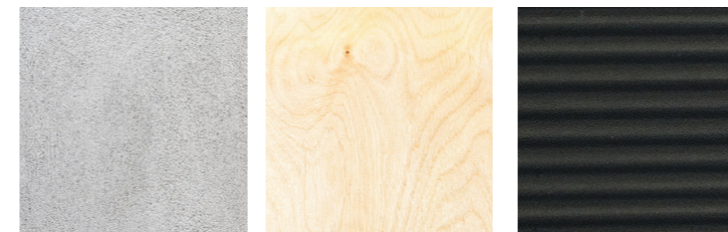
How should the shelving in the Aid Fund store be arranged? Is any other furniture needed in here for working?

Fixtures, fittings, and finishes: Storage and work areas

Space	Internal finishes: walls and ceiling	Internal finishes: floor	Lighting	Fittings (included in tender)	Electric points	Furniture (by FSC)
Un-heated storage and covered work area	Corrugated fibre cement and translucent fibreglass cladding to external walls; Spruce plywood to outside of insulated pods	Power-floated finish to screed floor	Suspended LED ceiling lights LED wall lights to tent repair bay	3 no. sinks and worktops Manual pulley system for drying tents within lantern Manual pulley system for storing canoes/kayaks at high level	Plug sockets for equipment	Storage shelving



Internal finishes:



Internal face of corrugated cladding; floated screed finish to floors; plywood lining to insulated pods

Lighting:



Suspended LED ceiling lights
LED wall lights to area below the roof lantern

Questions:

Any comments on the proposed specifications given in the table?

What furniture (if any) is needed in the covered work area? Will this be out permanently or stored when not in use?