

An Adventure in Education



Forest School Camps
Programme 2008



Contents

About Forest School Camps.....	1	Easter & Earlier.....	8
* How to Enrol.....	2	Spring Camps.....	10
* Camp Fees.....	4	Whitsun & Early Summer Camps.....	12
* Aid Fund.....	5	Summer Camps.....	14
* Children with Special Needs.....	5	Associate Membership of FSC.....	26
* Cancellation.....	5	Associate Camps.....	27
* Parents' Meeting.....	6	FSC Stores at Haddenham.....	29
* Police Checks.....	6	Conservation & Skills Camps.....	30
* New Sites.....	6	FSC Regional Groups.....	32
* New Campers.....	6	Camp Kit List.....	34
* Camp Life.....	7	New Staff.....	38
		Contacts.....	39
		Camp Dates.....	40
		Camp Sites.....	41

Welcome to the FSC Programme 2008. Please read the programme and important information pages carefully. The main points are highlighted below.

- * This year, Easter Camps do not fall over the Easter Bank Holiday weekend. Please make sure you check the dates carefully.
- * This year, the Summer Camp dates are later than usual. Please note that the 2nd fortnight camps run over the August Bank Holiday weekend. Again, please make sure you check the dates carefully.
- * Please note the split of the age groups in the How to Enrol section.
- * You have a better chance of a place on a summer camp if you opt for second fortnight.
- * No child should be unable to camp for financial reasons (see Aid Fund section).
- * Please note that we have changed the way we display the fee information this year (See Camp Fees section)

We hope you like your programme, and that you enjoy planning your camping this year.



Camp Sites



Camp Dates

No	Dates	Camp Name	Where (see map)	Ages	Fee Group*	Extra Info
1	01.02.08 - 03.02.08	Mendip Cave Training	Mendips	16 - 17.11	A	E
2	16.02.08 - 20.02.08	Mendips in February	Mendips	11 - 17.11	E	E
50	14.03.08 - 16.03.08	Danbury Wooding	Danbury	18 +	-	CS
51	21.03.08 - 24.03.08	Greyhill Family Camp	Greyhill	18 +	-	CS
3	05.04.08 - 12.04.08	Basic Shakin'	Danbury	9 - 17.11	F	
4	05.04.08 - 12.04.08	Heatwave in Stockton	Stockton	6.6 - 17.11	F	
52	18.04.08 - 20.04.08	Spring at Rushall Manor Farm	Rushall	16+	-	CS
5	02.05.08 - 04.05.08	The World According to Gurn	Danbury	6.6 - 15.11	D	CS
6	03.05.08 - 05.05.08	Venice	Venice	9 - 17.11	C	
7	02.05.08 - 05.05.08	Spring Weekend at Hodore	Hodore	6.6 - 17.11	D	
40	02.05.08 - 05.05.08	Magdalen Associates	Magdalen	Family	-	A
41	02.05.08 - 05.05.08	Shining Cliff Associates Camp	Shining Cliff	Family	-	A
53	02.05.08 - 05.05.08	Spring at Braziers Park	Braziers Park	16 +	-	CS
8	16.05.08 - 18.05.08	Spring Cycling Weekend	Hodore	12 - 17.11	B	E
42	16.05.08 - 18.05.08	Ribblesdale Associates Camp	Ribblesdale	Family	-	A
43	23.05.08 - 26.05.08	Milling around at the Mill	Suffolk	Family	-	A
9	24.05.08 - 31.05.08	Snowdonia at Whitsun	Snowdonia	6.6 - 17.11	G	
10	24.05.08 - 31.05.08	Seven nights long in Stockton	Stockton	6.6 - 17.11	G	
11	24.06.08 - 31.05.08	Mad About Magdalen	Magdalen	6.6 - 17.11	G	
12	06.06.08 - 08.06.08	Great Ouse Canoe Weekend	Great Ouse	10 - 17.11	B	E
44	20.06.08 - 22.06.08	Church Houses Associates Camp	Farndale	Family	-	A
54	21.06.08 - 04.07.08	Greyhill Camp	Greyhill	18 +	-	CS
45	18.07.08 - 20.07.08	Rushall Manor Farm Associates Camp	Rushall	Family	-	A
27	29.07.08 - 13.08.08	Scottish Hebridean Adventure	Hebrides	12 - 17.11	J	E
20	30.07.08 - 08.08.08	The Really Happy Herring.....	Hodore	6.6 - 17.11	H	
21	30.07.08 - 12.08.08	Pen-y-bont One-der	Pen-y-bont	6.6 - 17.11	I	
22	30.07.08 - 12.08.08	South Cornwall One	South Cornwall	6.6 - 17.11	I	
23	30.07.08 - 12.08.08	Freestyling in Farndale	Farndale	6.6 - 17.11	I	
24	30.07.08 - 12.08.08	Harlech One	Harlech	6.6 - 17.11	I	
25	30.07.08 - 12.08.08	Dinas	Dinas	6.6 - 17.11	I	
26	30.07.08 - 12.08.08	Teviotdale	Teviotdale	6.6 - 17.11	I	
28	30.07.08 - 12.08.08	Black Mountains and Beyond....	Black Mountains	11 - 17.11	I	E
31	14.08.08 - 27.08.08	Pen-y-bont Two	Pen-y-bont	6.6 - 17.11	I	
32	14.08.08 - 27.08.08	Cornwall Calling	South Cornwall	6.6 - 17.11	I	
33	14.08.08 - 27.08.08	Farndale Two	Farndale	6.6 - 17.11	I	
34	14.08.08 - 27.08.08	Harlech Two	Harlech	6.6 - 17.11	I	
35	14.08.08 - 27.08.08	Two Wheels Good, Four Wheels Bad	West Ireland	12 - 17.11	I	E
46	23.09.08 - 25.09.08	Luvly Water, Luvly Earth	Suffolk	Family	-	A
55	26.09.08 - 28.09.08	Late Summer at Braziers Park	Braziers Park	16 +	-	CS
36	25.10.08 - 27.10.08	Yorkshire Cave Training	Bull Pot Cave	16 - 17.11	A	E
37	27.10.08 - 31.10.08	Bull Pot of the Witches	Bull Pot Cave	12 - 17.11	E	E
56	24.10.08 - 26.10.08	Autumn at Rushall Manor Farm	Rushall	16 +	-	CS
57	28.11.08 - 30.11.08	Greyhill Camp	Greyhill	Family	-	CS

E = Experienced FSC campers only
CS = Conservation and Skills camps

A = Associate Camps

* Please refer to page 4 for fee information.

Forest School Camps

FSC is not a commercial holiday company; it is an educational charity and a voluntary organisation. All our officers and staff are unpaid volunteers.



The original Forest School, which ran in the 1930s, drew its philosophy from progressive educators, from the Woodcraft movements and the Native Americans, from Quakers and others. Special importance was attached to the experience of boys and girls, children and adults, learning to work and play together close to nature.



FSC began in 1948 when former pupils and staff came together, anxious to develop and pass on the ways, values and spirit of Forest School which by then had closed.



Our approach to education is about discovering for oneself how to do something, rather than being told in the abstract. Children and staff find themselves in situations that encourage this; the outdoors demands and encourages learning.



We remove unnecessary authority and, with due regard for safety and legality, encourage children to take responsibility and reach their own decisions on both small and not-so-small issues, individually or as members of a group.



At camp we aim to teach ourselves how to live with independence and responsibility; concern and care for ourselves, others people and the environment; resourcefulness and self-confidence; tolerance and respect. FSC is determined that all people be treated equally regardless of age, gender, sexual orientation, ethnic origin, religion or disability. These are high ideals - we don't always succeed.



A Native American belief is that you will only be in touch with nature if you 'sit and sleep on the earth'. This feeling for the wholeness of life on our planet is expressed in some of our rituals and the names we give things at camp.



The philosophy developed at camp is practised throughout the administrative organisation of FSC. When you enrol your children you become part of FSC and this approach. Many staff members begin their association with FSC as parents or campers.



Camp is great fun, though at a practical level it can also be cold and wet, and often dirty. Despite this, many people camp again and again and again. Join us to find out why!

www.fsc.org.uk

Printed on recycled paper by Principal Colour

How to Enrol

Early application is strongly recommended for all camps as demand for places is high. Children whose applications are received after 1 February 2008 will be disadvantaged in their placement on camp. However, we place children to ensure that camps are balanced by age, sex, and experience. Therefore children are not allocated places in strict order of receipt of applications, and some applicants applying earlier than 1 February may still be disappointed.

All children who camp with us are youth members of FSC until they reach the age of 18, when we hope to welcome them as staff.

Members are placed first. New applicants may be placed on a waiting list for one or more years.

* Please apply for summer camps on the yellow enrolment forms, and for all other camps use the blue enrolment forms.

* Please send a separate form for each child and camp; if necessary photocopy extra forms or download from our website.

* Please send completed forms to the appropriate enrolment secretary. A full list of these addresses appears on the contacts page.

Because we try to provide a continuous experience for children, priority for membership is given to siblings of existing members.

New campers are not normally accepted after their twelfth birthday as there is great demand for older child places, and these are given in preference to existing members.

Children are not normally enrolled on activity camps until they have attended two standing camps, i.e. when they are experienced FSC campers. This applies even if your child has camped with other organisations. The standing camps impart the basic FSC philosophy essential for activity camps.

Please do not ask for more than two children (other than siblings) to camp together as this restricts our ability to offer them a place on their choice of camps. In addition, this may reduce the chance of children being placed at all.

At camp, children join their own age group (based on their age on 1st September):

Elves	6.6 years - 8.11 years
Woodlings	9 years - 11.11 years
Trailseekers	12 years - 13.11 years
Trackers	14 years - 15.11 years
Pathfinders	16 years - 17.11 years

Each group camps separately from the others. Therefore unless siblings or friends happen to be in the same group, it will not be possible for them to share a tent.

Contacts

All our workers are voluntary and help Forest School Camps in their spare time. While every effort is made to deal with enrolments and correspondence promptly, some delays are unavoidable. Please write to or e-mail our officers rather than telephone them.

Chair

Andy Freedman
39 Slad Road
Stroud
GL5 1QR
chair@fsc.org.uk

Enquiries Officer

Sophie Nathan
20 Albion Square
London
E8 4ES
enquiries@fsc.org.uk

Treasurer

Ro Ogle
9 Whitefield Crescent
Swindon
SN5 5AA
treasurer@fsc.org.uk

Enquiries about children's enrolment

Jess McGregor
48L Woodlands Park Road
London
N15 3RX
children@fsc.org.uk

Enrolment Secretaries:

Easter & Earlier Enrolments

Julie and Rod Gritten
Traian Llanfrothen
Penrhyndeudrath
Gwynedd
LL48 6SW

Spring Weekend Enrolments

Maddy Cooke
3 Cottage Close
Nuneaton
CV11 6JE

Whitsun Enrolments

Mary Brown
32 Castellain Road
London
W9 1EZ

Summer Enrolments

FSC Summer Enrolments
2 Hall Fold
Thurgoland
Sheffield
S35 7EA

For Special Enrolments,
please see page 5
For Aid Fund Secretary,
please see page 5
For Conservation and Skills Camps,
please see page 30

FSC Website:
www.fsc.org.uk

Forest School Camps is a company limited by guarantee and registered as a charity;
Company Number 937722, Charity Number 306006.

Registered address: Druid's Alter, Llangenny, nr Crickhowell, Powys, NP8 1HD.

Data Protection Statement: Information on FSC's database is held under the provision of the Data Protection Act. It is held exclusively for promoting the proper functioning of the charity, Forest School Camps.



New Staff

If you are over eighteen and you think FSC sounds like your sort of organisation, do give us a try. We can't offer much by way of money – just expenses – but the good company of like-minded adults of all ages keeps many people coming back time and again. Some of our best staff are recruited by children returning from camp and urging their parents to join in the fun. We provide training in practical camping skills and also make sure that each camp has a balance of new and experienced staff so that each person can continue 'learning by doing'.

If you enjoy the open air, the company of children and being part of a community, come along to a weekend training camp, find out what's involved and see whether you enjoy it. Parents often have much needed experience in child care, younger staff have more energy for boisterous games and activities. Whether you're zany and imaginative or dull and dependable, we need your talents!

Training camps last for two or three days (generally over a bank holiday), and run alongside a regular camp. Before being offered space on a training weekend, we require that trainees have had a request for a police check submitted to the CRB.

For more details on weekend dates and the CRB process, and to receive an application form, please send your name, contact details (address, phone numbers, email) and date of birth to:

Kevin Hafter

30 Marlborough Road
Chiswick
London
W4 4ET
new.staff@fsc.org.uk



Camp Fees

Please refer to the camps listed on pages 8-25 for the applicable fee grouping.

It is FSC policy that children will not be refused a place due to financial circumstances. Financial support is available on all camps. Please see Aid Fund below.

Group	Fee
Group A	£30
Group B	£50
Group C	£70
Group D	£75
Group E	£100
Group F	£180
Group G	£190
Group H	£220
Group I	£295
Group J	£320

Please write the camper's name on the back of the cheque/PO/money order making it payable to 'Forest School Camps'.

If a child misses the escorted party it is the parent or guardian's responsibility to arrange his or her transport to the site at their own cost.

For camps in Groups A – D

* Please send the full fee with your application form.

* Once you are offered a place on camp of your choice £30 of this total fee is treated as a non-refundable deposit.

* Fees include return fares from London.

Please deduct £5 per child for those travelling independently.

* All fees must be paid in full at least six weeks before the camp.

For camps in Groups E – J

* Please send an initial deposit of £30 for each child on camp with your application form.

* The deposit will not be banked until the end of February if the application to camp is successful. This is at about the same time as a place on camp is offered by the organiser. This deposit is non-returnable.

* The remainder of the fee may be paid in three instalments. Please indicate on your enrolment form if you wish to use this method of payment.

* Family discount is £15 per child when three or more children attend a camp in groups E - J.

* Fees include return fares from London but those travelling independently will usually receive a rebate. Please ask the organiser for details.

* All fees must be paid in full by May 31st.

Note 7: Rucsac

Most importantly, a rucsac should fit the owner comfortably, and be able to carry the essentials depending on age, namely sleeping bag, spare clothes, waterproofs, eating things, and some food and water on hike. Rucsacs are graded by capacity, and as a rough guide, consider 35-40 litres for smaller children and 50-65 litres for larger ones. It is worth testing a rucsac fully loaded before camp, preferably when trying it on in the shop, and always line it with a waterproof liner – rubble sacks are a cheap and effective solution.

Many campers will not be able to pack all their equipment in a single rucsac. See the general notes above concerning additional luggage.

Note 8: Torch

Good lightweight torches are widely available. Torches will need to be carried on hike so don't bring a massive searchlight, and remember the spare batteries.

Note 9: Penknife

A simple penknife or single-bladed folding knife is useful. Extra gadgets on a penknife will increase the price more than the usefulness. A lanyard, chain, or length of string is strongly recommended for attaching the knife to a belt as a safeguard against loss. Pack your knife in your rucsac for the escort journey – it will not be needed and is liable to be lost.

Under Tens

Our experience at camp convinces us that the under tens need extra underwear, socks and two pairs of pyjamas. Waterproofs should be large enough for the tops to fit comfortably over several layers, and the bottoms to fit over wellingtons.

Mobile Camps

Lightweight tents, cooking stoves, fuel containers and billies are needed. A tent should have a ysheet, a sewn-in groundsheet and should ideally weigh less than 1.5 kg per person sharing it. You will normally be expected to supply at least one of the above items. Your camp chief will supply a complete specialised kit list and can advise you what to buy (or borrow).

When packing for walking mobiles, all your kit (with some space left for food) must fit inside your rucsac. Strong, waterproof walking boots with Vibram soles, or similar, are essential; they must be comfortable and be well walked-in.

For canoeing mobiles, your kit has to be packed into several small waterproof bundles. Kitbags (maximum size 80cm by 30cm diameter) and a small frameless rucsac are best; anything larger will not fit into a canoe.

On cycling mobiles, all your kit must fit inside your panniers and saddle bags (leaving some space for food!).



Note 3: Shirt/Top and Trousers

Jeans are tough but terrible to wear when wet, so bring a variety of types of trousers. At least one light top should be long sleeved with a collar to protect against the sun by day, and insects by night. Clothing that can be worn in many layers is much more flexible, and allows adjustment to the weather and conditions better.

Note 4: Tents

FSC holds a limited supply of small tents which we can lend to campers at standing camps. Those who continue to camp will want to get a tent of their own. Tents should be fully waterproof, and should have 2 layers – an inner and a flysheet. Single layer nylon tents will not withstand heavy rain and are unsuitable. An entrance porch is useful for removal and storage of wet clothing and boots under shelter. Tents should be suitable for at least 2 people but also remember that they may need to be carried on hike or mobile camps. Both A frame (less common now, and more costly), and dome tents are suitable subject to the previous conditions. When choosing a tent, make sure it is both stable and waterproof in windy conditions (if the flysheet and inner tent can touch in the wind, it will leak). If flexible poles are used, alloy are stronger than fibreglass, but will increase the cost. Please make sure your camper is able to pitch their own tent before sending them to camp with it.

Note 5: Groundsheet

A separate groundsheet is useful for sleeping out and sitting on.

Note 6: Sleeping bag

Synthetic (e.g. 'Hollowfill') sleeping bags are recommended for most campers as they retain much of their effectiveness when damp, are easier to clean, and less costly. However, some older more experienced campers may prefer down bags which are warmer for the weight, and pack smaller, although they require more care. Sleeping bags are rated by warmth as 1-5 seasons, and we recommend 3 seasons or above for general camp use.

We recommend that all sleeping bags should be used with sheet linings – either cotton or fleece (avoid thin synthetic linings as they are less comfortable and offer little extra insulation).

The use of an insulating mat between the sleeping bag and the groundsheet will add significantly to warmth of the sleeper. Camp beds and lilos are bulky and unsuitable for camp. We recommend that two sleeping bags be used at Easter and autumn camps. All bedding should be packed into a thick polythene bag or sack.

Aid Fund

FSC offers assistance with camp fees for families who cannot afford to pay the full fees. This may include students, parents on benefits or a low income and those whose circumstances change. In order to apply for assistance from the Aid Fund, please tick the box in the enrolment form and the Aid Fund secretary will contact you.

Children will not be refused a place due to financial circumstances, although we do sometimes have to turn down children due to the high demand for places.

The Aid Fund also has equipment, such as sleeping bags, waterproofs etc. If you would like to borrow any equipment for camp please contact the Aid Fund secretaries at the below address:

Ben and Bron McCarthy
2 Hall Fold
Thurgoland
S35 7EA
Aid.fund@fsc.org.uk

The Aid Fund is very grateful to receive donations. This enables other children to enjoy the experience of FSC. Please make cheques payable to 'FSC (Aid Fund)' and send them to the Treasurer (see contacts page). If you would like to make your donation more tax efficient through the use of the Gift Aid scheme, or would like to make a regular donation by standing order, please visit our website and download the form, or let the Treasurer know and she will send you the appropriate form.

Children with Special Needs

FSC runs some camps suitable for active children with special needs due to learning difficulties or physical disabilities (Camps 5, 7 and 20).

We also integrate these children into other

camps wherever possible. We can advise parents, guardians or sponsors which camp would be the most suitable for a particular child. We realise that children with disabilities may need a dedicated staff member at camp.

If parents or sponsors feel that their child with disabilities would enjoy camping, we ask them not to let the cost deter them from applying, as FSC may be able to arrange financial assistance. Camp 20 is substantially subsidised by FSC and run specifically for members with learning difficulties.

Parents or sponsors of children with special needs should apply directly to:

Frances Rainford & Vic Daggart
FSC Stores
Hill Row
Haddenham
Cambridgeshire
CB6 3PA
ld@fsc.org.uk

Social workers, teachers, care workers, foster parents and others wishing to enrol children who would benefit from our camps should also contact Frances & Vic at the above address.

Cancellation

If you have to cancel a place at a camp, please write to the camp organiser, giving the reason, as soon as possible.

The enrolment fee is not returnable.

If a place is cancelled within eight weeks of the start of camp it will not be possible to enrol another child. It is therefore unlikely that we will be able to make a refund. FSC does not insure you against cancellation. Holiday insurance (available from most travel agents and banks) would cover you against this risk. Such insurance could also cover loss or damage to a member's equipment, for which FSC cannot accept responsibility.

Please note that the final decision on refunds rests with the Children's Secretary.



Parents' Meeting

There will be a Saturday meeting in central London for parents, guardians and sponsors whose children are enrolled on this year's camps:

Saturday 26th April 2008

For those attending spring, Whistun or summer camps.

This will be an opportunity for you to meet some of the staff of the camps and to find out more about FSC. Full details of the meeting will be sent to you by your camp organiser. If you do not have a child enrolled, but would like to attend the meeting, details may be obtained from the Enquiries Officer (see contacts page) after 1st April.

Police Checks

From 2002, Forest School Camps has been developing a system to allow its staff to receive Criminal Records Bureau (CRB) disclosures (police checks). From 2007, all staff must have had a request for a police check submitted to the CRB before they can be enrolled to staff on our camps.

We continue to operate our own internal procedures to ensure the suitability of our staff, over and above the information obtained from police checks. We will be keeping the process of police checking our staff under regular review.

New Sites

There have been occasions in the past when we have had to cancel camps (due to Foot and Mouth disease, for instance). Our need to cancel would be reduced if more sites were available to us. If you have, or know of, twelve acres or so of land which would be suitable for a camp, whether as emergency back-up or as a regular site, please contact:

Ruth Steed

Camps Committee Coordinator

camps@fsc.org.uk

New Campers

Going to camp for the first time can seem scary. Camp life is very different from the lifestyle most of us are used to, but children fit in very quickly and enjoy the experience of living in an FSC community. Both staff and children are learning all the time, and every camp has its own good and bad times for everyone.

Each year there are some children who are camping for the first time. Staff make every effort to ensure that new children feel at home and secure. Camp is a caring community where everyone tries to be alert to each individual's hopes and fears. The camp starts on the escort journey, and it's a good idea for children to travel with the escorted party if at all possible. This is where people first start to get to know each other.

Further information and advice will come by post with the 'pre-camp circular' a few weeks before camp starts.

MISCELLANEOUS

- cloth bag containing:
 - plastic mug
 - deep plate
 - knife, fork and spoon
- sponge bag containing:
 - annel, soap and nailbrush
 - toothbrush and paste
 - comb/hairbrush
- towels, two medium size
- torch and spare batteries (Note 8)
- penknife (Note 9)
- notebook and pencil
- paper and stamps (for writing home)
- plastic bin liners (for keeping things clean and dry)
- sunblock
- insect repellent*
- musical instrument*
- 'dressing up' clothes*
- materials for making things (e.g. embroidery thread)*

* optional

Note 1: Rainwear

Every camper should have a complete set of rainwear. Several types of garment are suitable for camp, but the essential features of them all are that they are completely waterproof, and that headwear and waterproof trousers are included. If possible test your camper's waterproofs under the shower or garden hose (but remember if you selected badly you may not be able to return them to the shop after this!)

Suitable types of rainwear include those made from;

- a) PVC – This is tough, suitable for young children, and completely waterproof if somewhat heavy and a bit bulkier.
- b) Proofed nylon - Check that the proofing is waterproof e.g. neoprene lining, and that the seams are taped to ensure they are waterproof.
- c) Breathable "Gore-Tex" or similar garments are also suitable if fully waterproof, but bear in mind they are more expensive and should be 3 layer (rather than 2) so that they stand up to the harsh treatment they may receive at camp.
- d) Rubberised fabric or oilskins are tough and waterproof, but heavier.

AVOID: Light weight nylon cagoules with chemically treated seams – they will leak after anything more than a shower; "Barbour" or other similar waxed jackets – they are not waterproof in sustained wet conditions and are expensive.

Note 2: Footwear

Even at standing camps we do a lot of rough walking, so footwear must be comfortable. Leather walking boots are ideal as they provide ankle support, good foot protection, and have good grip in most conditions. For younger children, sturdy trainers with a good grip may be adequate. As it is often wet underfoot, Wellingtons are recommended for all campers and are ESSENTIAL for the under 10s – make sure they are big enough to accommodate thick socks, and that they tuck inside your waterproof trousers.

In addition, campers may wish to have some lighter footwear for wearing around camp e.g. light trainers, plimsolls, sandals or similar.

All footwear must be well walked-in before camp.

Camp Kit List

On camp we live out in the elements. Staying warm and dry on a wet day, or not suffering from sunburn after a hot one, makes a big difference to a child's enjoyment of camp. Learning to live comfortably in the outdoors in all weathers is an important part of camp life.

Please make sure your child is well prepared for all conditions. The kit list below is a distillation of our experience and is meant as a helpful guide for you and your child to ensure they are appropriately equipped at camp.

General Notes

Reasonably priced equipment is available from several high street camping shops – it is not necessary to invest in the best or most expensive equipment for camp, but do make sure that what you buy is fit for purpose. Very cheap discount equipment often does not stand up to the rigours of camp life and may leave your camper cold, wet and unhappy. Also, please don't bring treasured items that are delicate or vulnerable to water or dirt.

Loss of equipment and packing

A distressing amount of personal equipment is lost at camp. There are a few simple strategies to prevent this:

- Labelling – all clothing and equipment should be indelibly labelled with the camper's name
- All campers should be involved in their packing. A surprising number of items are lost because the camper did not know that they brought them in the first place, or did not know where they were packed.
- Efficient packing. Please make sure that your camper's equipment is packed inside no more than 3 bags – multiple items increase the chance of loss, and items strapped or tied on to the top of bags are at risk of coming off and being lost. In addition to a rucksack, a canvas bag, kitbag, or zipped holdall is good for remaining luggage. Line all luggage with waterproof sacks – bin liners are great for this.

CLOTHING

- rainwear (Note 1)
- footwear (Note 2)
- 3 warm tops (sweatshirts etc)
- 3 pairs of trousers/jeans (Note 3)
- 2 warm woollen jerseys or fleeces
- thick socks, two pairs
- pyjamas/track suit
- swimming costume
- sunhat
- woollen hat and gloves
- handkerchiefs/tissues
- shorts/dress/skirt*

And depending on the length of camp, an appropriate number of...

- light tops (T-shirts etc) (Note 3)
- socks
- underclothing

EQUIPMENT

- lightweight tent (Note 4)
- groundsheet (Note 5) *
- sleeping bag (Note 6)
- rucksack (Note 7)
- Ordnance Survey map (1:25000)*
- compass* ('Silva' type recommended)

Camp Life

Most of our summer, Whitsun and Easter camps are standing camps. This means that they are based at one site. Small camps may have between 25 and 35 children on them, and large camps between 60 and 70. At standing camps we impart the basic camping skills. The children learn to pitch a tent, to look after their possessions and to keep them dry. They learn to gather and cut wood, to make fires and to cook food. Groups of campers from across the age range - clans - take turns in the kitchen to prepare the food for the camp.

All this knowledge is consolidated by the two to four-day hike which takes place during the camp. Each age group goes with its staff for a distance suitable for the age and strength of its members. During the hike the children usually plan, buy (with camp funds) and cook their own meals, with help when needed.

Other activities during the camp may include swimming, exploring, night walks, country dancing, organised activities in trees,

campfires, and various FSC games. The end of camp is marked by two major events: Merymoot and Lodge Common Council. At Merymoot, the whole camp gathers round a roaring fire to entertain each other with a mixture of songs, sketches and improvisations. At Lodge Common Council, the campers gather around a more formal fire and review the camp, suggesting changes in activities or emphasis for the following year.

After a few standing camps, many children are ready to try an activity camp. Most of these camps are semi-mobile or mobile, travelling on foot, by bicycle, by canoe or by sailboat. The campers buy their food (with camp funds) every few days and cook in small groups. Activity camps are generally smaller than standing camps, usually with 15 to 25 children. Some mobiles are strenuous, others are easier. The descriptions of the camps give more information. Many activity camps are for experienced FSC members only, i.e. those who have attended 2 standing camps.



Easter and Earlier

Please note the dates of Easter Camps 3 & 4 – these are NOT over the Easter Bank Holiday weekend.

There are often more places available on Easter camps than on Whitsun and summer camps. The weather at Easter is sometimes challenging, but the result is often a particularly close and enjoyable camp.

1 Mendip Cave Training

Camp Chief: **Flow Stone**
Organiser: **Flow Stone**

We will go underground to remember or learn about the wonderful Mendip caves in readiness for the Mendip caving camp. The training is for experienced pathfinder cavers who would like to extend their skills and knowledge so they can help others on camp. This is also a good chance for staff new to caving to try it before staffing a caving camp.

Extra info: this camp is for experienced FSC campers only.

Ages: **16 - 17.11**

Dates: **Fri 1st Feb – Sun 3rd Feb**

Travel: **Independent travel to camp or train escort from London Paddington if needed** (campers to pay cost)

Fees: **Group A**

Please refer to Camp Fees section on Page 4

2 Mendips in February

Camp Chiefs: **Giles Vellacott and Helen Spencer**
Organiser: **Lesley Morrison**

Book immediately for a fabulous February start to the 2008 season. Camp with showers – both underground waterfalls and the hot indoor variety. We will explore the wintry Mendip Hills above and below ground, sleeping and eating in the Mineries caving hut, dancing, singing and feasting in traditional FSC style. No previous caving experience is required but campers must be experienced with FSC.

Extra info: this camp is for experienced FSC campers only.

Ages: **11 - 17.11**

Dates: **Sat 16th Feb – Wed 20th Feb**

Travel: **Escort from Bristol Temple Meads and Paddington**

Fees: **Group E**

Please refer to Camp Fees section on Page 4

Preparing for Camp

Equipment

You probably already own most of the things you need for a standing camp. Warm, well-worn clothing is required. The only essential extras are a sleeping bag and really effective waterproofs; we don't always take shelter when it rains. We ask that families who continue to camp with us try to supply at least one two-person tent. Full details of what to bring to standing camps are given in the kit list section. For mobile camps some more specialist equipment may be required; see extra notes in the kit list, but full details will be sent to you by your camp organiser.

Tetanus

We ask that all campers are fully protected against tetanus well before camp. The pre-school tetanus course lasts for ten years and the school-leaving booster lasts until age 25.

Life Jackets

We make it a firm policy that life jackets or buoyancy aids are worn when children are canoeing, sailing or rafting with FSC. We will provide them. Our policy is not to wear buoyancy aids when narrow-boating.

Travel

Escorted parties travel between London and our camps. The expected departure and destination stations are listed under each camp. Final details of times and meeting places will be sent in a pre-camp circular a few weeks before camp. Campers may arrange to join the escorted party at any station at which the train stops, but those doing so will be asked to purchase their own tickets to and from the destination. A travel refund will be made.

Insurance

Forest School Camps takes responsibility only for the activities listed in this programme. Forest School Camps insures for its liabilities at law. While all possible care is taken to avoid accidents, Forest School Camps does not insure for personal accident or for loss or damage to personal property. Those who are not already insured for personal accident and for all risks in respect of personal effects may wish to make their own arrangements. Children and staff of camps which travel to foreign countries, including the Republic of Ireland, are covered by a comprehensive travel policy which includes medical treatment as well as loss and damage to personal effects, subject, of course, to the usual limitations and exclusions. The cost of this insurance is included in the camp fee. Details of the insurance scheme can be provided on request. Forest School Camps is not able to insure you if you have not been permanently resident in the United Kingdom for 12 months prior to effecting the insurance. In such cases you must provide us with evidence of suitable cover effected in your country of residence and you will receive a refund equivalent to the insurance premium that would have been paid on your behalf.

Please apply for the above camps on BLUE forms and send them to:
Julie & Rod Grifflen, Traian Llanfrothen, Penrhyndeudrath, Gwynedd, LL48 6SW.
Please check that dates coincide with your school holidays.

FSC Regional Groups

Over the years, FSC staff have set up informal, regionally based groups which meet and run occasional weekend camps.

Western Region

After a long break, we have started camping again in the West over the last two years. We have had two weekend camps near Abergavenny and one on the River Wye near Hereford. We also had a walking mobile on the Quantocks over the May bank holiday weekend in 2007. Dates and sites for 2008 have yet to be decided, but if you would like to find out more, please contact us.

Tom Bennett

58 Foxcote Road
Ashton
Bristol
BS3 2BZ
western.region@fsc.org.uk

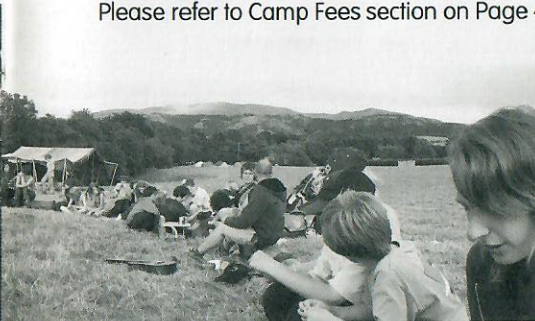


3 Basic Shakin

Camp Chief: **Dave Monk**
Organiser: **Sarah Coase**

With a few beautiful basic knots we will hang about in trees and seek shelter under canopies of our own creation. You can make fire from rock and steel, bake a Birthday cake and know where North is.... and that's all in the first day!!! The weather will challenge us with bright sun and two sleeping bag nights! Bring energy, laughter and an exploring mind. 168hrs of extreme time is Basic Shakin.

Ages: **9 - 17.11**
Dates: **Sat 5th Apr - Sat 12th Apr**
Travel: **Coach from London to Danbury Woods in Essex**
Fees: **Group F**
Please refer to Camp Fees section on Page 4



4 Heatwave in Stockton

Camp Chief: **Davy Starkey & Johnny Morris**
Organiser: **Ruth Hallgarten**

Hopefully glorious blue skies will be with us for the duration of our days in the field at Easter, but whatever the weather come **PREPARED** to: have fun, eat glorious food, learn without realising, gaze at the stars, hang out in the trees and be amazed by the pleasure one can have in the outdoors with 70 people.

Ages: **6.6 - 17.11**
Dates: **Sat 5th Apr - Sat 12th Apr**
Travel: **Coach from London**
Fees: **Group F**
Please refer to Camp Fees section on Page 4



Please apply for the above camps on BLUE forms and send them to:
Julie & Rod Gritten, Traian Llanfrothen, Penrhyndeudrath, Gwynedd, LL48 6SW.
Please check that dates coincide with your school holidays.

Spring Camps

5 The World According to Gurn

Camp Chiefs: **Vic Doggart and John Bradshaw**
Organiser: **Jack Sloan**

Yes, Yes, sisters and brothers! Once again we are proud to present the Gargantuan Genealogical voyage on the good ship Gurn. This will be an action packed hot shoe shuffle and a strategic survivalist adventure in the wonderful wild woods of eclectic Essex, amongst the beautiful beech and blazing blue bells. Let the Mayday magic mayhem begin as we celebrate international workers day in true Beltane style – Big Up! We are expecting and welcoming a mighty integrated mix of all ages and abilities.

Ages: **6.6 - 17.11**
Dates: **Fri 2nd May – Mon 5th May**
Travel: **Train from London King's Cross**
Fees: **Group D**

Please refer to Camp Fees section on Page 4

6 Venice

Camp Chiefs:
Roddy Brooks and Stefan Ashford
Organiser: **Jan Ashford**

Spring will be sprung on the canals on the edge of the Black Country, and so will our footsteps along the towpaths, plus a ride or two on our (fl)rusty narrowboat during the days. Evenings and mornings will be spent camping usual FSC standing camp style. We visit the Black Country Living Museum on Monday before the train home. It might be wet or sunny, come expecting rain and hope for a heatwave.

Ages: **9 - 17.11**
Dates: **Early morning Sat 3rd May – Evening Mon 5th May**
Travel: **Train from London Marylebone**
Fees: **Group C**
Please refer to Camp Fees section on Page 4
Deduct £5 if travelling independently to camp



Please apply for these camps on BLUE forms and send them to Maddy Cooke, 3 Cottage Close, Nuneaton, CV11 6JE. Please check that these dates coincide with your school holidays

Conservation and Skills Camps

50 Danbury Wooding

Camp Leaders and Organisers: **Sophie Nathan, Jack Freedman and Leo Murray**

FSC uses the lovely site of Danbury Woods more and more and we would like to give something back to the forest. So come join us for a wintry weekend of tree-felling, fagot making, harness wearing and general forest shenanigans. Learn new woodland skills, and make new friends.

Ages: **18+ unless accompanied by a parent/guardian**
Dates: **Fri 14th Mar – Sun 16th Mar**

51, 54, 57 Greyhill Camps

Camp Leader and Organiser:
Stuart Peachey

Greyhill is a beautiful site near Chepstow that is being (re)developed into a 17th Century smallholding for educational use. Come and help us do carpentry on the roof timbers, build pig gates, dig gardens, stonewall, coppicing and hedge laying. Come and learn in a relaxed atmosphere with warm evening fires, talk and singing.

Ages: **18+ unless accompanied by a parent/guardian**
Dates (51): **Fri 21st Mar – Mon 24th Mar**
Dates (54): **Sat 21st June – Fri 4th July**
Dates (57): **Fri 28th Nov – Sun 30th Nov**

52 & 56 Spring/Autumn at Rushall Manor Farm

Camp Leaders and Organisers (56):
Bodric Priest and Janet Powell

The John Simmonds Trust continues its rural community education projects at the Golden Valley site near Pangbourne. We will help with their path clearing, tree planting and access improvement projects to aid their progress.

Ages: **16+ unless accompanied by a parent or guardian**
Dates (52): **Fri 18th Apr – Sun 20th Apr**
Dates (56): **Fri 24th Oct – Sun 26th Oct**

53 & 55 Spring/Late Summer at Brazier's Park

Camp Leaders and Organisers (53 & 55):
Tim Abbott and Rad Wagon

We continue to develop our relationship with the Community at Brazier's Park near Reading. Over spring and late summer weekends we will help support projects in perma-culture and other kinds of sustainable approaches to country living.

Ages: **16+ unless accompanied by a parent or guardian**
Dates (53): **Fri 2nd May – Sun 4th May**
Dates (55): **Fri 26th Sep – Sun 28th Sep**

Conservation and Skills Camps

At camp we may take the fabric of the countryside for granted, but conservation and skills camps give us the chance to redress that balance a little. These camps are generally run over weekends, and involve all kinds of tasks: coppicing, hedging, path laying, and repairing or reconstructing traditional farm buildings.

FSC conservation and skills camps are cheap, convivial and confidence-building. They are run on similar lines to small standing camps. The camps are generally planned for the over-sixteens, with no upper age limit of course, but families with younger children are also very welcome.

There are no special qualifications for volunteers. Everyone can contribute to ensuring that the camp is an enjoyable and memorable experience. In fact it's a great opportunity to try your hand at glee or catering as well as woodcraft.

There are no fees or charges. You travel independently to the camp site and will be asked to contribute the appropriate amount for the running costs of the camp. This is usually about £4.00 per day to cover food. You need a tent, old clothes, and waterproofs.

Volunteers from abroad and older campers new to FSC are especially welcome. Week-long camps may qualify for the residential requirement of the Duke of Edinburgh Award scheme (Gold).

We cannot offer any financial return - but the good company of like-minded adults of all ages keeps many people coming back time and again.

For further information or to enrol please contact the FSC Conservation and skills camps Secretary (email is preferred):

Tim Abbott
42 Church St
Hungerford
RG17 0JH
conservation@fsc.org.uk



7 Spring Weekend at Hodore

Camp Chiefs: **Polly Shields**
Organiser: **Anna Feuchtwang**

Come and enjoy a fast-paced 3-night camp in the beautiful bluebell woods at Hodore. We will make friends, build fires, eat in circles, have fun, sing songs, sleep well, wake early and pack as much as we can into our 72 hours. Come and see how much fun you can have with people you've only just met. This is a camp for everyone, and is particularly good for FSC first timers and people with limited mobility.

Ages: **6.6 - 17.11**
Dates: **Fri 2nd May - Mon 5th May**
Travel: **Coach from London**
Fees: **Group D**
Please refer to Camp Fees section on Page 4

8 Spring Cycling Weekend

Camp Chiefs: **Dicon Murray and Dave Monk**
Organiser: **Leila Murray**

Come and try out cycle touring, it may change your life! We will be freewheeling through the lanes of Sussex, letting our bikes carry the weight and learning how to ride in groups. All of our equipment needs to fit into panniers (no support vehicles for us!). You'll need a touring or mountain bike with a rack and panniers - borrowed is fine. For advice on bikes and equipment or to discuss the camp please call Dicon on (020 75173461). This camp is recommended if you would like to go on the summer cycling mobile (Camp No.35).
Extra info: This camp is for experienced FSC campers only.

Ages: **12 - 17.11**
Dates: **Fri 16th May - Sun 18th May**
Travel: **Coach from London**
Fees: **Group B**
Please refer to Camp Fees section on Page 4
Deduct £5 if travelling independently to camp

Whitsun & Early Summer Camps

9 Snowdonia at Whitsun

Camp Chiefs: **Jess Mace & Jimmy Proudlock**
Organiser: **Emma O'Brien**

Join us for a magical Whitsun week among the mountains. We will work together to create a community, have fun, learn and care for our environment. All abilities, interests and skills are welcome.

Ages: **6.6 - 17.11**
Dates: **Sat 24th May – Sat 31st May**
Travel: **Coach from London**
Fees: **Group G**
Please refer to Camp Fees section on Page 4



10 Seven nights long in Stockton

Camp Chief: **Julian Welsh**
Organiser: **Thelma Jones**

In the middle of middle England, where the hills look like peas, lies Stockton. There is a field that will be ours for a week, between the chalk soil and the dark pheasant woods. There are giant oaks around which we will pitch our tents and giggle in the drizzle. There will be singing in the long light evenings and fires in the night. Prepare yourself to be in the middle of all this.

Ages: **6.6 - 17.11**
Dates: **Sat 24th May – Sat 31st May**
Travel: **Coach from London**
Fees: **Group G**
Please refer to Camp Fees section on Page 4

11 Mad about Magdalen

Camp Chief: **Daniel Simon**
Organiser: **Fiona Clarke**

On the beautiful border of Dorset and Somerset we will once more make our home at Magdalen Farm for a week of campfires, games and woodcraft. There is a river to paddle in and the sea only a hike away. Come ready for two weeks packed into one with your sunhats and waterproofs, your instruments and songs, your ideas and action. See you in the field.

Ages: **6.6 - 17.11**
Dates: **Sat 24th May – Sat 31st May**
Travel: **Coach from Richmond (S.W. London)**
Fees: **Group G**
Please refer to Camp Fees section on Page 4

FSC Stores at Haddenham

What is FSC Stores?

All the equipment used on our camps is stored and maintained at our Haddenham Stores centre near Ely in Cambridgeshire, where enthusiastic working parties gather regularly throughout the year. In each of ten months of the year there is a Stores weekend, at which we clean and repair our equipment as well as pack and unpack all the equipment sent out to camps. In the other two months of the year, at Easter and in August, there are House weekends when we work on improving the buildings and grounds.

Can I come?

All the weekends are fantastic social occasions and any and all additional pairs of hands are always needed and very welcome.

At Stores weekends all staff and Pathfinders are welcome. Pathfinders need the written consent of their parent or guardian in order to attend; an appropriate form is available on the FSC website (in Downloads) or can be obtained from Domini Hawthorn.

Please apply for the House weekend camps as for other Conservation and Skills camps.

How do I get there?

A minibus usually runs from London, and there are regular attendees travelling from all around the country who may be able to offer lifts, or we can arrange to get you picked up from Ely station.

Who can tell me more?

For dates of, or any information regarding, the Stores weekends, please contact the FSC Stores person:

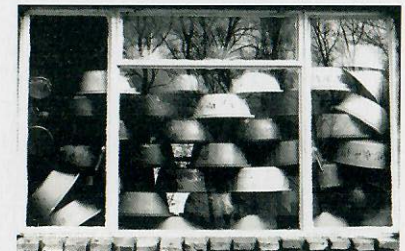
Domini Hawthorn
42 Argyle Street
Swindon
Wiltshire
SN2 8AR
stores@fsc.org.uk

For any queries regarding travel to or from, or catering at, Stores weekends, please contact one of Haddenham's Hostesses:

Jessie Mazet
2 Docking Rd
Fring
King's Lynn
Norfolk
PE31 6SQ

Dorrie Young
Left front door at
Argyll House
310 Richmond Road
Richmond
TW1 2PD

hostess@fsc.org.uk



44 Church Houses Associates Camp

Camp Chief: **Elizabeth Grayson**
Organisers: **David and Hilary Hughes**

We are returning to this beautiful site in the North Yorkshire Moors for a weekend which will be packed with activities including camp fires, walking, dancing, chopping, sawing and digging and of course cooking and eating delicious food. Come to meet old friends and make new ones.

Dates: **Fri 20th June to Sun 22nd June**

46 Luvly water, luvly earth

Camp Chief: **Phil Gellhorn**
Organiser: **Lorna English**

Come and enjoy the myriad delights of a luvly bit of Suffolk countryside set around an old mill and millpond at Assington. It's a beautiful site which allows many opportunities for stream jumping, boat building and exploring the countryside. Meanwhile we will be cooking up some good nosh, talking and chatting, singing and dancing and having fun the FSC way.

Dates: **Sat 23rd Aug to Mon 25th Aug**

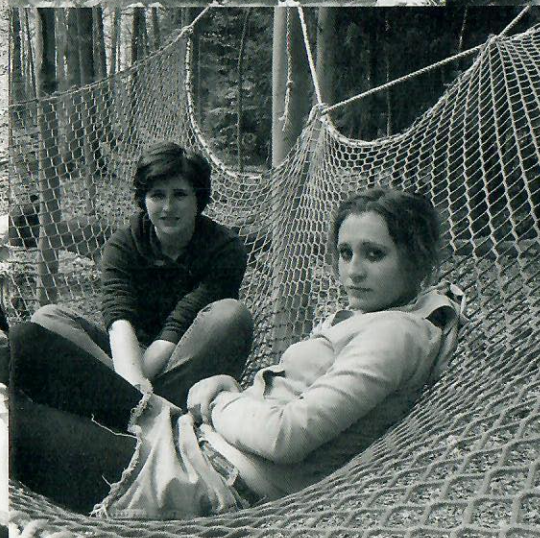


45 Rushall Manor Farm Associates Camp

Camp Chiefs: **Deborah and Peter Jackson**
Organiser: **Lorna English**

In the depths of winter, think Summer, think Rushall. They've been farming there for 700 years and it's a fabulous place for a family camp: a good friend to old campers and a great introduction for young ones. The last Pea Fair we did was so good that it transferred to the West End, and this year's Night Walk will take place by the light of the Full Moon. We fear heavy demand for places from werewolves and vampires, so book early.

Dates: **Fri 18th July to Sun 20th July**



12 Great Ouse Canoe Weekend

Camp Chiefs: **Hazel Powell & Julian Brown**
Organiser: **Jenny Wigston**

Time to get wet again in the Ouse water! This is a quick introduction to canoe camping. We will paddle upstream to a small weir and rapidly learn to control our canoes in fast moving water. Then, in small groups, we will buy food (using camp funds), work out how to keep it dry, and later cook on stoves. Joining us at this river bank site, just North of Milton Keynes, will be a staff training group, who are likely to get even wetter than us, since capsizing will be compulsory for them, but optional for us. Who are the lucky ones?

Extra Info: Beginners to canoeing are welcome, but everyone must be able to swim 50 metres. This camp is for experienced campers only.

Ages: **10 - 17.11**

Dates: **Fri 6th June - Sun 8th June**

Travel: **Train from Euston to Wolverton**

Fees: **Group B**

Please refer to Camp Fees section on Page 4
Deduct £5 if travelling independently to camp



Please apply for these camps on BLUE forms and send them to:
Mary Brown, 32 Castellain Road, London, W9 1EZ.
Please check that these dates coincide with your school holidays

Summer Camps

Please note Summer Camp dates.
2nd Fortnight camps extend over the
August Bank Holiday weekend

20 The Really Happy Herring Wreaks Red Havoc @ Hodore.... (its H-H-h-h-hilarious).

Camp Chiefs: **Vic Doggart & Davey Starkey**
Organiser: **Sophie Holloway-Hintzen**

Hurray!

Red Herring is still HOT,
Red Herring is still COOL
the Red Herring is still alleviating the
BORDIUM of school.

Climb aboard, me darling hearties, for a Vi-
carious Voyage of Dynamic Davyesque ad-
ventures in the glorious green of Sussex splen-
dour where ying duck formations fill the sun
setting sky. There will be a paddle in the river,
a treasure trail in the wood, magic moments,
merry mayhem, happy havoc and peaceful
places make up ten days of LIFE, LOVE and
LAUGHTER for campers with a range of abili-
ties, disabilities and specific needs to form
a right old fab and groovy mix of old friends
and new. It's a date - don't be late.

Pathfinders are very welcome to join the staff
group to learn, muck in and work hard. Plus
fresh staffing blood is particularly welcome.

Ages: **6.6 - 17.11**

Dates: **Weds 30th July - Fri 8th Aug**

Travel: **Coach from London Brixton**

Fees: **Group H**

Please refer to Camp Fees section on Page 4



please apply for these camps on YELLOW forms and send them to:
FSC Summer Enrolments, 2 Hall Fold, Thurgoland, Sheffield, S35 7EA
please check that these dates coincide with your school holidays

Associate Camps

40 May Day Music Making at Magdalen Associates Camp

Camp Chiefs: **Simon Emmerson
and Anita Andrews**
Organiser: **Lorna English**

We will be running a friendly, music and craft
activity centred camp on this wonderful, re-
mote rural site nestling on the Dorset/Som-
erset borders. The theme of the camp will
be May Day music making, craft skills, dance
and general FSC style merriment. Along with
all the other fun activities this site has to of-
fer we hope to bring together FSC musicians
and friends into a live Ceilidh band so we
can learn the tunes and songs handed down
through FSC then dance and sing the evening
away under the stars or in a barn depending
on the weather. Bring craft materials to help
decorate a May Day fair and a heart full of
creativity and the joys of spring.

Dates: **Fri 2nd May to Mon 5th May**

41 Shining Cliff Associates Camp

Camp Chiefs: **Adrian Matthews and
Julia Tozer**
Organiser: **Lorna English**

'Oh the woods, the woods, the call of the
woods'. Get woken up to the dawn-chorus in
full wood in beautiful bluebell woods at Shining
Cliff, that mysterious vestige of ancient wood-
land that runs down to the River Derwent in
Derbyshire. In a matter of hours we will come
together as a community and have a won-
derful time walking, talking, playing, making
and singing. Rain, sun, wind and weather -

we don't care - bring it on, we love it all. Big
hearted roaring campfires will echo through
the dusk and we will have a night game in the
dark! Come prepared to get those May juices
flowing. **Please note that the camp will be
vegetarian.**

Dates: **Fri 2nd May to Mon 5th May**

42 Ribblesdale Associates Camp

Camp Chief: **Steve Fletcher**
Organiser: **David and Hilary Hughes**

Come and join our camp on the banks of
the River Ribble for a weekend packed with
activities! We will bake bread and cakes in
our own oven as well as the usual activities,
swimming, walking, singing and dancing, but
there will be no caving this year. The scenic
Settle to Carlisle railway runs by the camp so
leave the car at home and come by train!

Dates: **Fri 16th May to Sun 18th May**

43 Milling around at the Mill

Camp Chiefs: **Tom Broadhurst
and Anne Milstein**
Organiser: **Lorna English**

Why not be part of the thrill..... Flexible start
Friday night or Saturday for those wishing to
avoid the Friday rush. Bring your woodcraft
skills or be prepared to learn. We will swim
walk and sing and be creative with willow
and charcoal, making the most of this won-
derful Suffolk site at Assington. Above all we
will have fun.

Dates: **Fri 23rd May to Mon 26th May**

Associate Membership of FSC

Parents and supporters who become Associate Members of FSC receive news of FSC's activities in an annual newsletter. There are weekend family camps especially for Associate Members and their families. The annual subscription is £5. The Associate Members' Secretary will send you a form and further details on request.

Associate Members and FSC staff are all welcome at family camps, with or without their children. There is no age limit, upper or lower, and these camps are particularly suitable for very young children who may be camping for the first time. Supervision of the children is the responsibility of their parents, and there is no organised travel, allowing us to keep the fees to a minimum. Parents and children share in the communal cooking, with food and cooking equipment provided by the camp. There will be many of the usual FSC activities like rally, singing around the campfire, games, walks, and whatever the site and our ingenuity can produce.

To apply for a family camp please use the form sent to all Associate Members, or download application form from the downloads section of our website. Please note that these camps get booked up quickly, so don't delay in applying.

Associate Members' Secretary
Nelleke van Helfteren
7 Victoria Road
Colchester
CO3 3NT
Email: associates@fsc.org.uk

Southern Camps Organiser
Lorna English
55 Grosvenor Avenue
Newcastle-upon-Tyne
NE22 2NP

Northern Camps Organisers
David and Hilary Hughes
Malkin House
Brow Lane
Holmfirth
West Yorkshire
HD71RJ

NB: A parent who becomes an Associate Member or attends a family camp does not give their child any priority on the waiting list to attend any of our main camps.



Because of the large number of applications for children's places for these camps, and the need to ensure that the camps are well balanced and not too large, we cannot guarantee a place for all applicants wanting to go on main summer camps. You stand a better chance of getting a place if you opt for a second fortnight camp.

Please note Summer Camp dates

21 Pen-y-bont One-der

Camp Chiefs: **Sam Lee & Rosie McConnell**
Organiser: **Karen Patrick**

This will be a camp for sharing songs and stories down by the fireside, the riverside and in the wild woods. We will learn to wonder at the stars as we sleep under them... while under the sun we will build our lodge. Wealthy in skills, experienced at listening, rich in ideas and strengthened by each camper's unique offerings, this is a camp for hearts, lungs, an open mind and wellies.

Ages: **6.6 - 17.11**
Dates: **Weds 30th July - Tues 12th Aug**
Travel: **Coach from London**
Fees: **Group 1**
Please refer to Camp Fees section on Page 4

22 South Cornwall One

Camp Chief: **Lottie Davies**
Organiser: **Penny Wiles**

Come to Cornwall - land of pirates, smugglers and swashbuckling adventurers! We will spend two weeks making friends, exploring the outdoors, enjoying the sunshine and the smell of the sea, and creating as many adventures as we can pack in to thirteen days. We will make fires, cook delicious food, maybe walk to the coast, have night games and day games, fun and merriment - come with us!

Ages: **6.6 - 17.11**
Dates: **Weds 30th July - Tues 12th Aug**
Travel: **Train from London to Truro**
Fees: **Group 1**
Please refer to Camp Fees section on Page 4



23 Free Styling in Farndale

Camp Chief: **Rory Blackman**
Organiser: **Ayshah Jansen-Blackman**

Yo Yo COME ON!

Come on this exciting camp, with a focus on consensus decision making and how together, we can challenge and stretch ourselves in so many exciting ways. We will be sharing responsibility for how the camp is run, inclusive-ly enjoying this wonderful part of Yorkshire. Let there be music, hike and lots of fun under the sun. Let there be night vigils and woodcraft, for every one. Let there be dancing and lots of glee. Did I mention music, that sounds so good to me. Let there be laughter and lots of dressing up, and of course let there be love. But most of all let there be.....well that is going to be up YOU! I know you are up for the challenge.

Ages: **6.6 - 17.11**
Dates: **Weds 30th July – Tues 12th Aug**
Travel: **Train from London Kings Cross to York, then coach.**
Fees: **Group I**
Please refer to Camp Fees section on Page 4

24 Harlech One

Camp Chiefs: **Leslie Holden & Andy Doyle**
Organiser: **Karen Mautner**

We return to this magic place half way between the mountains and the sea, where FSC has camped for over 35 years. Come ready to make and renew good friendships in a caring, adventurous and gleeful community, which will include Pixies and Waywardens.

Ages: **6.6 - 17.11**
Dates: **Weds 30th July – Tues 12th Aug**
Travel: **Coach from London**
Fees: **Group I**
Please refer to Camp Fees section on Page 4

25 Dinas

Camp Chiefs: **Tom Walters & Leo Murray**
Organiser: **Caren Hertzog**

On the secret path that delves into the mountains, we will cover our tracks behind us. There in the wilds we will teach ourselves how to build a glorious civilization from nothing but mud, sticks, and four-score grubby, sparkling souls. The valley shall ring with songs of our deeds! We will eat mouth watering local, organic food and decide important things together as friends and as equals, as the cloud-sheep gambol through the summer skies above.

Ages: **6.6 - 17.11**
Dates: **Weds 30th July – Tues 12th Aug**
Travel: **Coach from London**
Fees: **Group I**
Please refer to Camp Fees section on Page 4

26 Teviotdale

Camp Chiefs: **Daniel Jacks and Corinne Howells**
Organiser: **Ruth Mazet**

Teviotdale is a wild and exciting site, just North of the Scottish border, and perfect for: the knot tying challenge, lots of woodcraft, cocoa under the stars, sun rising, dry socks, big camp fires, stories, singing and tartan dreams. Hurry the clans are gathering.....

Ages: **6.6 – 17.11**
Dates: **Weds 30th July – Tues 12th Aug**
Travel: **Train or coach from London**
Fees: **Group I**
Please refer to Camp Fees section on Page 4

Autumn Camps

36 Yorkshire Cave Training

Camp Chief: **Flow Stone**
Organiser: **Flow Stone**

An opportunity for experienced pathfinder cavers and staff (new or experienced cavers) to become familiar with the caves of Casterton Fell, so that we are ready to support others during 'Bull Pot of the Witches' the October caving camp which follows on directly from this training.

Extra info: This camp is for experienced FSC campers only.

Ages: **16 - 17.11**
Dates: **Sat 25th Oct – Mon 27th Oct**
Travel: **Train from London to Oxenholme**
Fees: **Group A**
Please refer to Camp Fees section on Page 4

37 Bull Pot of the Witches

Camp Chiefs: **Giles Vellacott and Helen Spencer**
Organiser: **Sam Jewell**

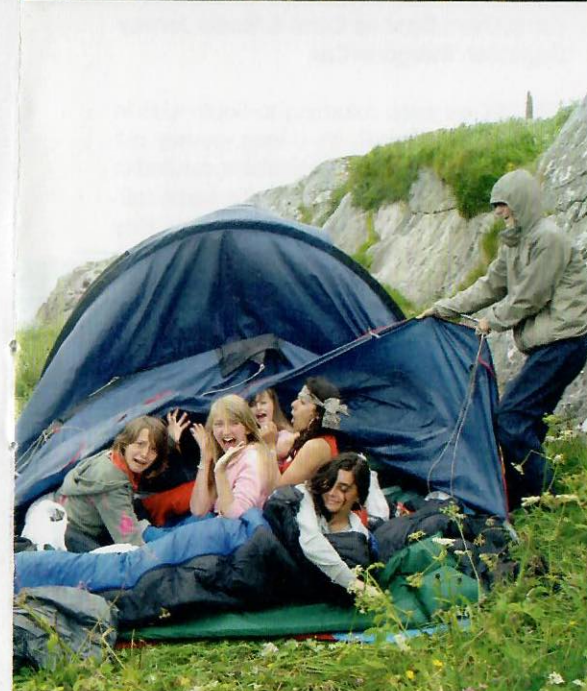
From the Bull Pot hut we descend into the bowels of the earth, exploring the beautiful limestone world of streams, pools and all the variety of oostone, gour pools, stalagmites and stalactites, climbs, squeezes, crawls and wriggles. The hut is way up a valley in the Lancashire hills, where we plan a good day's walk. We will eat and sleep in the old Bull Pot Farm, and keep up the FSC tradition of good company, good food, song and dance.

New cavers (staff and campers) welcome, 12 and over, but you must have a couple of FSC camps behind you.

Extra info: This camp is for experienced FSC campers only.

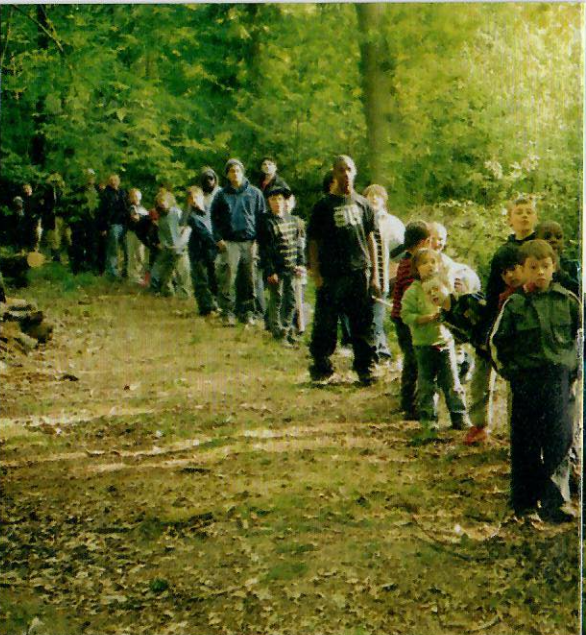
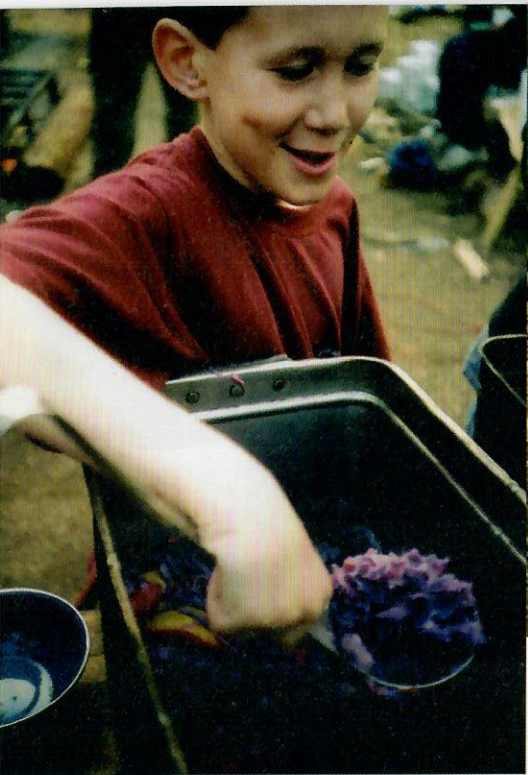
Ages: **12 - 17.11**
Dates: **Mon 27th Oct – Fri 31st Oct**
Travel: **Independent travel to camp** (campers to pay cost)
Fees: **Group E**
Please refer to Camp Fees section on Page 4





Please apply for these camps on BLUE forms and send them to:
 Maddy Cooke, 3 Cottage Close, Nuneaton, CV11 6JE
 Please check that these dates coincide with you school holidays

please apply for these camps on YELLOW forms and send them to:
 FSC Summer Enrolments, 2 Hall Fold, Thurgoland, Sheffield, S35 7EA
 please check that these dates coincide with your school holidays



27 Scottish Hebridean Adventure

Camp Chiefs: **Daphne Carré & Neale Jenvey**
Organiser: **Margaret Cox**

Why do we keep returning to South Uist in the Outer Hebrides? It's a long journey but at the end we reach a magical site, nestled in the dunes where we can hear the seals calling and listen to the Atlantic waves as they roll onto the beach. We will play in the sand, explore the island enjoy the hospitality of the islanders and perhaps visit some neighbouring islands. The weather can be challenging so a windproof tent, effective waterproofs and tough footwear are essential.

Extra info: This camp is for experienced FSC campers only.

Ages: **12 - 17.11**
Dates: **Tues 29th July pm – Weds 13th Aug am**
Travel: **Overnight coach from London to Skye, then ferry and coach to the site.**
Fees: **Group J**
Please refer to Camp Fees section on Page 4



please apply for these camps on YELLOW forms and send them to:
FSC Summer Enrolments, 2 Hall Fold, Thurgoland, Sheffield, S35 7EA
please check that these dates coincide with your school holidays



Please note that the following camps extend over the August Bank Holiday Weekend.

31 Pen-y-bont Two

Camp Chief: **Rad Wagon**
Organiser: **Sue Twigg**

Shelter-building, firelighting, knotting, chopping, cooking, stargazing, log-hauling, night-gaming. Then, the chance to sing and dance our way through 307 hours that will make OUR camp, from Pathfinder takeover day to Woodling rally.
If you bring it, we will build it. Come prepared to do a mobile of imagination every day.

Ages: **6.6 - 17.11**

Dates: **Thurs 14th Aug – Weds 27th Aug**

Travel: **Coach from West London**

Fees: **Group I**

Please refer to Camp Fees section on Page 4



28 Black Mountains and Beyond.....

Camp Chief: **Flow Stone**
Organiser: **Margaret Stone**

Above Abergavenny and nestled on the lower slopes of Sugar Loaf are the beautiful beech trees of St. Mary's Vale. Here we will begin our journey across the Black Mountains, through woods, beside rivers we can swim in and onward to wherever our hearts lead. Come prepared to walk every day and build a strong caring lodge that finds a new home each night. You do not need to be super fit for this camp, anyone who wants to do it will find they are able to, but you must enjoy walking.

Extra info: This camp is for experienced FSC campers only; comfortable rucksacks and boots required!

Ages: **11 - 17.11**

Dates: **Weds 30th Jul – Tues 12th Aug**

Travel: **Train London Paddington to Abergavenny. Return journey via Shrewsbury to London Euston**

Fees: **Group I**

Please refer to Camp Fees section on Page 4



32 Cornwall Calling

Camp Chiefs: **Gwynnie Griffiths and Angie Scoble**
Organiser: **Mike Coase**

Cornwall calling to the far away towns. We'll live by the stream and walk in the rain, Make friends in the fields, build our fires again. Remember songs to sing and we'll search for the sea, Climb the steepest hills and make our own tea. A traditional lodge, you'll never go it alone. Cornwall calling you to the reality zone.

Ages: **6.6 - 17.11**

Dates: **Thurs 14th Aug – Weds 27th Aug**

Travel: **Train from London Paddington to Truro**

Fees: **Group I**

Please refer to Camp Fees section on Page 4

Please note that the following camps extend over the August Bank Holiday Weekend.

33 Farndale Two

Camp Chiefs: **Lisa Hallgarten & Joe Francis**
Organiser: **Anne Francis**

Life in town is lame. Life on the hills on North Yorkshire is wild – the perfect landscape for excitement and adventure. We hope to learn new skills; see how little we need to survive; make sweet music without the aid of our gramophones (that's i-pods to you youngsters); and all this with just the power of our friendship, determination and humour.

Ages: **6.6 - 17.11**

Dates: **Thurs 14th Aug – Weds 27th Aug**

Travel: **Coach from London**

Fees: **Group I**

Please refer to Camp Fees section on Page 4

34 Harlech Two

Camp Chiefs: **Julie & Rod Gritten**
Organiser: **Kate Williamson**

Fire, running water, open skies and the growing earth beneath us. Camp feels like coming home to the place where we can truly be ourselves. Ours will be an energetic camp full of laughter, singing and playing, where we'll learn to live skilfully on the Earth. The mountains above, the sea below and the woods all around us, in this beautiful place, Pathfinders and Trackers will have the opportunity to have more adventurous mountain hikes.

Ages: **6.6 - 17.11**

Dates: **Thurs 14th Aug – Weds 27th Aug**

Travel: **Coach or Train from London**

Fees: **Group I**

Please refer to Camp Fees section on Page 4



35 Two Wheels Good, Four Wheels Bad

Camp Chiefs: **Dicon Murray & Dave Monk**
Organiser: **Leila Murray**

We will be heading for the beautiful West of Ireland on our bikes. We will hitch a ride half way there to help us on our way (by coach). Once there, apart from a daily dip in the Atlantic, we will cycle along the coast, enjoying this stunning part of Ireland, before cycling all the way back to the ferry at Rosslare. Come to enjoy the sun, sea, rain and singing on a bike. As we will be carrying all of our equipment a suitable bike with plenty of gears, rack and panniers is essential. Road or mountain bike are good but no full suspension bikes, please call Dicon, for any advice (020 75173461). All campers are encouraged to go on the spring cycling weekend (Camp No. 8)
Extra info: This camp is for experienced FSC campers only.

Ages: **12 - 17.11**

Dates: **Thurs 14th Aug – Weds 27th Aug**

Travel: **Coach London to Pembroke – Ferry to Ireland – Coach one way towards the West Coast**

Fees: **Group I**

Please refer to Camp Fees section on Page 4



please apply for these camps on YELLOW forms and send them to:
FSC Summer Enrolments, 2 Hall Fold, Thurgoland, Sheffield, S35 7EA
please check that these dates coincide with your school holidays

