

# Forest School Camps Programme 2006



An Adventure in Education



# Forest School Camps

FSC is not a commercial holiday company; it is an educational charity, and a voluntary organisation. All our officers and staff are unpaid volunteers.



Forest School, which ran in the 1930s, drew its philosophy from progressive educators, from the Woodcraft movements and the Native Americans, from Quakers and others. Special importance was attached to the experience of boys and girls, children and adults, learning to work and play together close to nature.



FSC began in 1947 when former pupils and staff came together, anxious to develop and pass on the ways and values of Forest School, which by then had closed.



Our education is about discovering for oneself how to do something, rather than being told in the abstract. Children and staff find themselves in situations that encourage this; the outdoors demands and encourages learning.



We remove unnecessary authority and, with due regard for safety and legality, encourage children to take responsibility and to reach their own decisions on small and not-so-small issues, individually or as a group.



At camp we aim to teach ourselves how to live with independence and responsibility; concern and care for ourselves, other people and the environment; resourcefulness and self-confidence; tolerance and respect. FSC is determined that all people be treated equally regardless of age, gender, sexual orientation, ethnic origin, religion and disability. These are high ideals - we don't always succeed.



A Native American belief is that you will only be in touch with nature if you 'sit and sleep on the earth'. Their feeling for the wholeness of life on our planet is expressed in some of our rituals and the names we give things at camp.



The philosophy developed at camp is practised throughout the administrative organisation of FSC. When you enrol your children you become a part of FSC and this approach. Many staff members begin their association with FSC as parents or campers.



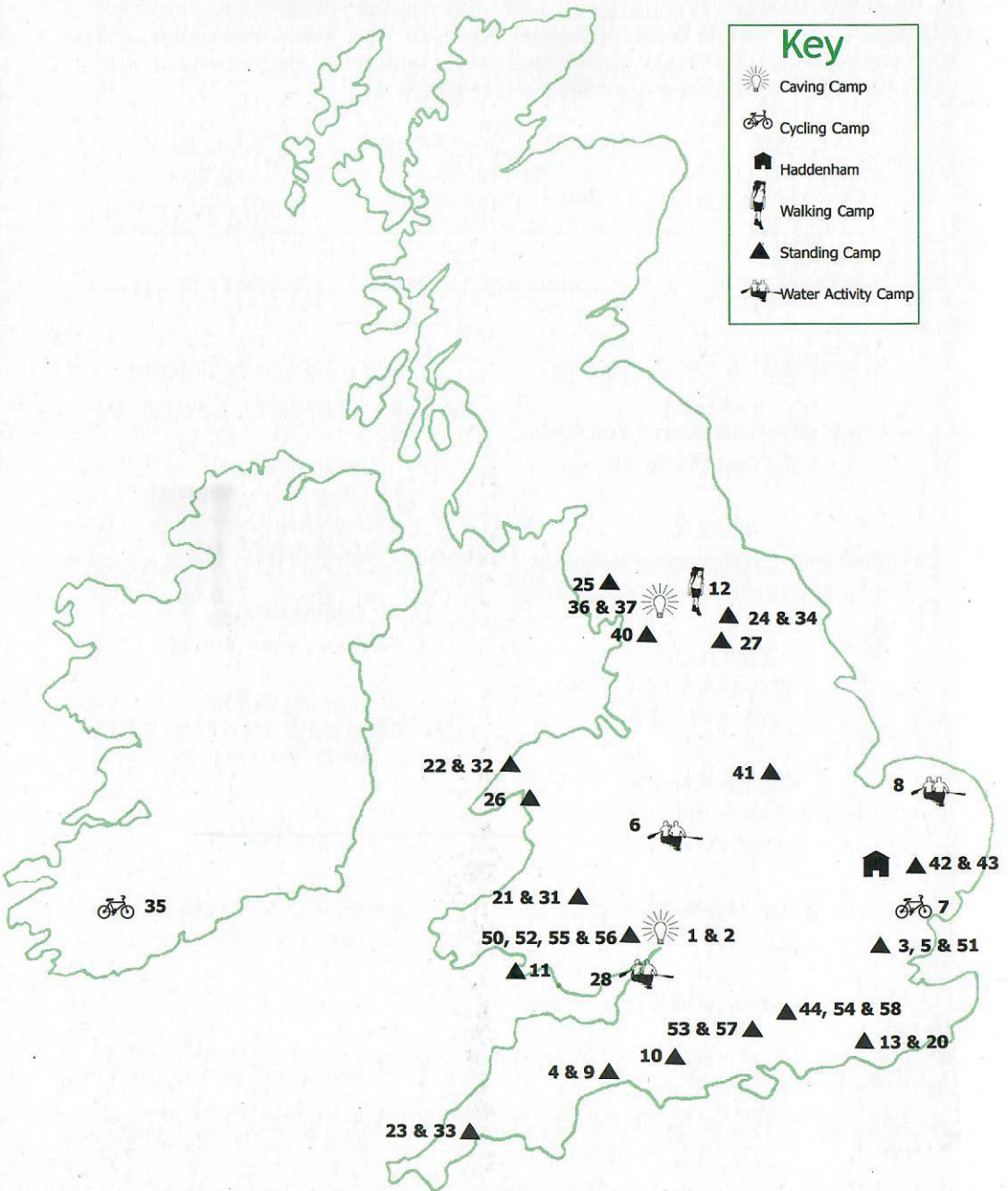
Camp is great fun, though at a practical level it can also be cold and wet, and is often dirty. Despite this, many people camp again and again and again. Join us to find out why!

# ...and When in 2006

No	Dates	Name	Ages	
50	20 Jan - 22 Jan	Greyhill Family Camp 1	Family	**
1	28 Jan - 30 Jan	Mendip Cave Training	15.0 - 17.11	*
2	15 Feb - 18 Feb	Mendip Caving	11.0 - 17.11	*
51	17 Mar - 19 Mar	Danbury Wooding	18 +	**
54	31 Mar - 2 Apr	Spring Rushall Manor	16 +	**
52	4 Apr - 11 Apr	Greyhill Family Camp 2	Family	**
3	8 Apr - 15 Apr	Shaken Knot Stirred	8.0 - 17.11	
4	8 Apr - 15 Apr	Easter at Magdalen	8.0 - 17.11	
53	28 Apr - 30 Apr	Spring Brazier's Park	18 +	**
40	28 Apr - 1 May	Ribblesdale Associate Camp	Family	
41	28 Apr - 1 May	Shining Cliff Associate Camp	Family	
5	28 Apr - 1 May	The BFG	6.6 - 17.11	
6	29 Apr - 1 May	Venice	8.0 - 17.11	
7	19 May - 21 May	Penny Farthing	11.0 - 17.11	
8	19 May - 21 May	Great Ouse Canoe Weekend	10.0 - 17.11	
43	27 May - 29 May	Super, Suffolk Associate	Family	
9	27 May - 3 Jun	Magical Magdalen	8.0 - 17.11	
10	27 May - 3 Jun	Stockton Tardis	6.6 - 14.11	
11	27 May - 3 Jun	Going for (Pem)broke	6.6 - 14.11	
12	27 May - 3 Jun	Yorkshire Adventure	10.0 - 17.11	*
56	31 May - 4 Jun	Greyhill Family Camp 3	Family	**
55	25 Jun - 1 Jul	Greyhill International Work	18 +	**
44	30 Jun - 2 Jul	Rushall Associate Camp	Family	
42	30 Jun - 2 Jul	Suffolk Associate Camp	Family	
13	30 Jun - 2 Jul	Playstation nah, Hodore...	6.6 - 17.11	
20	26 Jul - 4 Aug	The Red Herring Rides Again	6.6 - 17.11	
21	26 Jul - 8 Aug	Music Makers & Artisans...	8.0 - 17.11	
22	26 Jul - 8 Aug	Harlech One	6.6 - 17.11	
23	26 Jul - 8 Aug	South Cornwall One	6.6 - 17.11	
24	26 Jul - 8 Aug	Farndale One	8.0 - 17.11	
25	26 Jul - 8 Aug	Borrowbeck One	6.6 - 17.11	
26	26 Jul - 8 Aug	Dinas	6.6 - 17.11	
27	26 Jul - 8 Aug	Gormire Woods	8.0 - 17.11	*
28	26 Jul - 8 Aug	Wye Canoe?	10.0 - 17.11	*
35	9 Aug - 23 Aug	Cycling in Cork	13.0 - 17.11	*
31	10 Aug - 23 Aug	Penybont Two: The Chop...	8.0 - 17.11	
32	10 Aug - 23 Aug	In the Land of the Red...	8.0 - 17.11	
33	10 Aug - 23 Aug	South Cornwall Two	6.6 - 17.11	
34	10 Aug - 23 Aug	Farndale Two	8.0 - 17.11	
57	22 Sep - 24 Sep	Autumn Brazier's Park	18+	**
58	20 Oct - 22 Oct	Autumn Rushall Manor	16+	**
36	21 Oct - 24 Oct	Yorkshire Cave Training	15.0 - 17.11	*
37	24 Oct - 27 Oct	Yorkshire Caving	13.0 - 17.11	*



# Where we Camp...



The numbers above refer to the camp number on the list on page 39, opposite

# Contents

Forest School Camps.....	2	Autumn Camps.....	24
How to Enrol.....	4	Associate Membership of FSC.....	26
Parents' Meetings.....	6	Associate Camps.....	27
Cancellation.....	6	Haddenham Stores Centre.....	28
Children with Special Needs.....	7	Conservation & Skills Camps.....	29
Aid Fund.....	8	FSC Regional Groups.....	32
Camp Life.....	9	Preparing for Camp.....	33
New Campers.....	10	Kit List.....	34
Easter & Earlier.....	12	New Staff.....	36
Spring Camps.....	13	Useful Addresses.....	37
Whitsun Camps.....	16	Where we Camp (Map).....	38
Summer Camps.....	17	Camps Listing 2006.....	39
Main Summer Camps.....	18		





## How To Enrol

Early application is strongly recommended for all camps as demand for places is high. Children whose applications are received after 14 February 2006 will be disadvantaged in their placement on camp. However we place children to ensure that camps are balanced by age, sex, and experience. Therefore, children are not allocated places in strict order of receipt of applications, and some applicants applying earlier than 14 February may still be disappointed.

All children who camp with us are youth members of FSC until they reach the age of 18, when we hope to welcome them as staff.

Members are placed first. New applicants may be placed on a waiting list for one or more years.

Please apply for summer camps on yellow enrolment forms and for all other camps on blue enrolment forms.

Please send a separate form for each child and camp; if necessary photocopy extra forms, or download them from our website, [www.fsc.org.uk](http://www.fsc.org.uk).

Please send completed forms to the appropriate enrolment secretary. A full list of addresses appears on page 37.

Please send a separate cheque/P.O. for each child and camp:

For camps of 6 nights and shorter, send the full fee. Of this, £30 is treated as a non-returnable deposit, once you are offered a place on a camp of your choice.

For camps of 7 nights and longer, send £30. This deposit is not returnable once you are offered a place on a camp of your choice.

Please write the camper's name on the back of your cheque/P.O./money order and make it payable to 'Forest School Camps'.

We require two stamped addressed envelopes, A4 size or larger, per application form. One is used to give confirmation of our receipt of your application and the second to offer a place at camp.

For the main summer camps only, the remainder of the fee may be paid in three instalments; please indicate on your enrolment form if you wish to use this method of payment.

Family discount - for families where three or more children attend summer camps there is a reduction in fees of £15 per child.

All fees for summer camps must be paid in full by May 31. Fees for Whitsun camps must be paid in full six weeks before the camp begins.

Fees printed in the programme include return fares from London. For camps of 6 nights and shorter, a deduction of £5 may be made by those travelling separately where this is indicated in the programme. For camps of 7 nights and longer, those travelling separately usually receive a rebate.

If a child misses the escorted party it is the parent's or guardian's responsibility to arrange the camper's transport to the site at their own cost.

## Useful Addresses

All our workers are voluntary and help Forest School Camps in their spare time. While every effort is made to deal with enrolments and correspondence promptly, some delays are unavoidable. Please write to or e-mail our officers rather than telephone them.

### Chair

Andy Freedman  
39 Slad Rd, Stroud  
GL5 1QR

chair@fsc.org.uk

### General Secretary

Ben Keith  
89 Roseberry Gardens  
London, N4 1JL

gensec@fsc.org.uk

### Treasurer

Ro Ogle  
9 Whitefield Crescent  
Swindon, SN5 5AA

treasurer@fsc.org.uk

### Enrolment Secretaries

#### SUMMER

Ruth Steed, 14 Highfields, Forest Row,  
East Sussex, RH18 5AJ

#### EASTER

Julie & Rod Gritten, Traian Llanfrothen,  
Penrhyndeudraeth, Gwynedd LL48 6SW

#### WHITSUN

Mary Brown, 32 Castellain Road  
London, W9 1EZ

#### OTHER CAMPS

Maddy Cooke, 12b Laurier Rd  
London, NW5 1SG

For **Special Needs** Enrolments  
please see page 7.

For **Conservation & Skills** camps see  
page 29.

Forest School Camps is a company limited by guarantee and registered as a charity; Company Number 937722, Charity Number 306006. Registered address: Druid's Altar, Liangenny, nr. Crickhowell, Powys, NP8 1HD. Forest School Camps is exempt from VAT

Data Protection Statement: Information on FSC's database is held under the provision of the Data Protection Act. It is held exclusively for promoting the proper functioning of the charity, Forest School Camps.

### Programme Requests & New Member Enquiries

Brenda Hatcher  
FSC Programme Requests  
8 Broadview, Fryent Way,  
London, NW9 9SG

#### Enquiries about Children's Enrolment:

Jess McGregor,  
12a Fairmead Rd, London, N19 4DF  
children@fsc.org.uk

### Aid Fund

For the **Aid Fund Secretary** address  
please see page 8



## New Staff

If you are over eighteen and you think FSC sounds like your sort of organisation, do give us a try. We can't offer much by way of money – just expenses – but the good company of like-minded adults of all ages keeps many people coming back time and again.

Some of our best staff are recruited by children returning from camp and urging their parents to join in the fun. We provide training in practical camping skills and also make sure that each camp has a balance of new and experienced staff so that each person can continue 'learning by doing'.

If you enjoy the open air, the company of children and being part of a community, come along to a weekend training camp, find out what's involved and see whether you enjoy it. Parents often have much

needed experience in child care; younger staff have more energy for boisterous games and activities.

Training camps last for two to three days. Please see page 6 for our statement about criminal record checks.

Information is sent out in reply to queries in the Spring. If you have applied for a place on a training camp and have not heard from FSC in good time, please write to:

**Sam Raphael**  
**Staffing Secretary**  
**9 Clarendon Rd**  
**London, N15 3JX**  
**staffing@fsc.org.uk**



Because we try to provide a continuous experience for children, priority for membership is given to siblings of existing members.

New campers are not normally accepted after their fifteenth birthday, since there is great demand for older child places. We also may not be able to place all new thirteen and fourteen year-olds owing to demand for places.

Children are not normally enrolled on longer activity camps until they have attended two standing camps, i.e. when they are experienced FSC campers. This applies even if your child has camped with other organisations. The standing camps impart the basic FSC philosophy essential for activity camps.

Please do not ask for more than two children (other than siblings) to camp together as this restricts our ability to offer them a place on their choice of camp. This may reduce the chance of children being placed at all.

At camp, children join their own age group: Elves 6.6 to 7.11, Woodlings 8.0 to 10.11, Trailseekers 11.0 to 12.11, Trackers 13.0 to 14.11, and Pathfinders 15.0 to 17.11 (ages on 1st September). Each group camps separately in the field from the others. Therefore unless siblings or friends happen to be in the same group, it will not be possible for them to share a tent.





# Important Information

## Parents' Meetings

There will be two Saturday meetings in central London for parents, guardians and sponsors whose children are enrolled on this year's camps: the morning of Saturday 22 April, for those attending spring, Whitsun or the early summer camps, and Saturday 24 June for those going to summer camps. These are opportunities for you to meet some of the staff of the camps and to find out more about FSC. Full details of the meeting will be sent to you by your camp organiser. If you do not have a child enrolled, but would like to attend the June meeting, details may be obtained from the General Secretary after 1 June.

## Cancellation

If you have to cancel a place at a camp, please write to the camp organiser, giving the reason, as soon as possible. **The £30 deposit is not returnable.** If a place is cancelled within eight weeks of the start of camp it will not be possible to enrol another child and it is therefore unlikely that we will be able to make a refund. FSC does not insure you against cancellation. Holiday insurance (available from most travel agents and banks) would cover you against this risk. Such insurance could also cover loss or damage to a child's equipment, for which FSC cannot accept responsibility.

**Please note that the final decision on refunds rests with the Children's Secretary**

## Police Checks

From 2002, Forest School Camps has been developing a system to allow its staff to receive Criminal Records Bureau (CRB) disclosures (Police Checks). Over the last 2 years this has been put into practice, and at present the majority of all active camp chiefs and staff have been policed checked. From the summer camps in 2006 (Camp number 20 onwards), it will be a requirement that all staff have had a request for a police check submitted to the CRB, before being able to attend as staff on our camps. We continue to operate our own internal procedures to ensure the suitability of our staff, over and above the information obtained from police checks. We will be keeping the process of police checking our staff under regular review.

## New Sites

There have been occasions in the past when we have had to cancel camps (due to Foot and Mouth disease, for instance). Our need to cancel would be reduced if more sites were available to us. If you have, or know of, twelve acres or so of land which would be suitable for a camp, whether as an emergency back up or as a regular site, please contact:

**Camps Committee Coordinator**  
**Kate Hall**  
**[camps@fsc.org.uk](mailto:camps@fsc.org.uk)**

# Mobile Camps

Lightweight tents, cooking stoves, fuel containers and billies are needed. A tent should have a flysheet, a sewn-in groundsheet and should ideally weigh less than 1.5 kg per person sharing it. You will normally be expected to supply at least one of the above items. Your camp chief will supply a complete specialised kit list and can advise you what to buy (or borrow).

When packing for walking mobiles, all your kit (with some space left for food) must fit inside your rucksac. Strong, waterproof walking boots with Vibram soles, or similar, are essential; they must be comfortable and be well walked-in.

For canoeing mobiles, your kit has to be packed into several small waterproof bundles. Kitbags (maximum size 80cm by 30cm diameter) and a small frameless rucksac are best; anything larger will not fit into a canoe.

On cycling mobiles, all your kit must fit inside your panniers and saddle bags (leaving some space for food)

**1** It is **ESSENTIAL** to have thoroughly waterproof rain wear. A PVC or heavy gauge proofed-nylon long anorak, cape or cagoule, with hood is recommended. Waterproof trousers are also useful and should be large enough to put on over boots. Very lightweight proofed-nylon is only showerproof and both this and plastic macs have a very limited life under camp conditions. Waterproofs should be tested under a shower or garden hose – if they leak your child will get wet every time it rains!

**2** Even at standing camps we do a lot of rough walking, so footwear must be comfortable. Children under eleven must have strong walking or at least training shoes. The heavier tread of walking boots gives better grip on wet grass. All campers will also need a pair of light-weight shoes for wearing around the camp. As it is often wet underfoot we recommend Wellington boots for all campers on standing camps, and consider them **ESSENTIAL** for the under-tens. Wellingtons should be large enough to accommodate thick socks. All foot-wear must be well walked-in before camp.

**3** At least one light top should be long sleeved with a collar to protect against sunburn.

**4** FSC holds a limited supply of small tents which we are prepared to lend to campers at standing camps. Those who wish to go on camping should aim to get a tent of their own. Less expensive traditional A-frame tents offer better protection than similarly priced dome tents.

**5** A separate groundsheet is useful for sleeping out and sitting on.

**6** The best bedding for camp is a sleeping bag which can be either natural (down and feather) or synthetic fibre filled. The latter is cheaper, can be washed, is heavier and bulkier but is adequate for our camps. All bags should be used with sheet linings. A blanket can provide extra warmth. Good insulation between sleeping bag and groundsheet can be provided by a Karrimat, as there is no room in small tents for camp beds or lilos. We recommend that two sleeping bags be used at Easter and autumn camps. All bedding should be packed into a thick polythene bag.

**7** A rucksac does not have to be large enough to hold everything but must be able to hold a sleeping bag, jumper, waterproofs and some food on hike. It must be comfortable and get the load as high and as close to the back as possible. Young children rapidly outgrow a small rucksac and a cheap un-framed pack is a better start than a poorly fitting framed rucksac. For extra kit, a canvas or nylon kitbag or zipped holdall is good; a suitcase is not suitable. Line all luggage with thick polythene sacks.

**8** Good lightweight torches are widely available. Torches will need to be carried on hike so don't bring a massive searchlight, and remember the spare batteries.

**9** A sheath knife or a single bladed penknife is useful; most other gadgets on a penknife will increase the price more than the usefulness. A lanyard, a chain or a length of string is strongly recommended for attaching the knife to a belt as a safeguard against loss.



# Standing Camps Kit List

On camp we will be living in the elements. Being warm and dry on a wet day, or not suffering from sunburn after a hot one, can make a big difference to a child's enjoyment of camp. Please make sure your child is prepared for both.

## Clothing

- rainwear<sup>1</sup>
- footwear<sup>2</sup>
- 3 warm tops (sweatshirts etc)
- 3 pairs of trousers/jeans
- 2 warm woollen jerseys or fleeces
- thick socks, two pairs
- pyjamas/track suit
- swimming costume
- sunhat
- woollen hat and gloves
- handkerchiefs/tissues
- shorts/dress/skirt\*

depending on the length of camp, an appropriate number of...

- light tops<sup>3</sup> (T-shirts etc)
- socks
- underclothing

## Equipment

- lightweight tent<sup>4</sup>
- groundsheet<sup>5</sup> \*
- sleeping bag<sup>6</sup>
- rucsac<sup>7</sup>
- Ordnance Survey map (1:25000)\*
- compass\* (Silva type recommended)

## Miscellaneous

- cloth bag containing:
  - plastic mug
  - deep plate
  - knife, fork and spoon
- sponge bag containing:
  - flannel, soap and nailbrush
  - toothbrush and paste
  - comb/hairbrush
  - towels, two medium size
  - torch and spare batteries<sup>8</sup>
  - penknife<sup>9</sup>
  - notebook and pencil
  - paper and stamps (for writing home)
  - plastic bin liners (for keeping things clean and dry)
  - sunblock
  - water bottle
  - insect repellent\*
  - musical instrument\*
  - 'dressing up' clothes\*
  - materials for making things (e.g. embroidery thread)\*

(\* optional )  
for notes see over

## Under Tens

Our experience at camp convinces us that the under tens need extra underwear, socks and two pairs of pyjamas. Waterproofs should be large enough for the tops to fit comfortably over several layers, and the bottoms to fit over wellingtons.

# Children With Special Needs

FSC runs some camps suitable for active children with special needs due to learning difficulties or physical disabilities (Camps 5, 13 & 20). We also integrate such children into other camps wherever possible. We can advise parents, guardians or sponsors which camp would be the most suitable for a particular child. We realise that children with disabilities may need a dedicated staff member at camp.

If parents or sponsors feel that their child with disabilities would enjoy camping, we ask them not to let the cost deter them from applying, as FSC may be able to arrange financial assistance. Camp 20 is substantially subsidised by FSC and run specifically for children with learning difficulties.

Parents or sponsors of children with special needs should apply directly to:

**Frances Rainford**  
**FSC Stores**  
**Hill Row**  
**Haddenham**  
**Cambridgeshire**  
**CB6 3PA**  
**ld@fsc.org.uk**

Social workers, teachers, care workers, foster parents and others wishing to enrol children who would benefit from our camps should also contact Frances at the above address.





## Aid Fund

Every year FSC subsidises places on camp for children of parents who cannot afford the full fees (students, parents on income support, or those with a low income or whose circumstances change). We do sometimes have to turn down children but this is due to a lack of places, not the financial circumstances of parents. We can also lend equipment where necessary (e.g. sleeping bags, waterproofs, boots, etc).

If you would like to discuss this further please write to:

**Aid Fund Secretaries**  
**Ben McCarthy & Bron Feld**  
**2 Hall Fold**  
**Sheffield**  
**S35 7EA**

Alternatively, if you would like to help other children enjoy the experience of FSC, please send donations to the treasurer (address on page on 37)

**Please make cheques payable to  
'FSC (Aid Fund)'**

If you would like to make your donation more tax efficient through use of the Gift Aid scheme, or would like to make a regular donation by standing order, please visit our website and download the form or let the Treasurer know and she will send you the appropriate form.



## Preparing for Camp

### Equipment

You probably already own most of the things you need for a standing camp. Warm, well-worn clothing is required. The only essential extras are a sleeping bag and really effective waterproofs because we don't always take shelter when it rains.

We ask that families who continue to camp with us try to supply at least one two-person tent. Full details of what to bring to standing camps are given in the kit list on page 34. For mobile camps some more specialist equipment may be required; a few notes appear on page 35, but full details will be sent to you by your camp organiser.

### Tetanus

We ask that all campers are fully protected against tetanus well before camp. The pre-school tetanus course lasts for ten years and the school-leaving booster lasts until 25.

### Travel

Escorted parties travel between London and our camps. In the case of rail travel, the expected departure and destination stations are listed under each camp. Final details of times and meeting places will be sent in a pre-camp circular a few weeks before camp. Campers may arrange to join the escorted party at any station at which the train stops, but those doing so will be asked to purchase their own tickets to and from the destination.

### Life Jackets

We make it a firm policy that life jackets or buoyancy aids are worn when children are canoeing, sailing or rafting with FSC. We will provide them. Our policy is not to wear buoyancy aids when narrow-boating.

Cycle Helmets: Cycle helmets must be worn when cycling with FSC.

### Insurance

Forest School Camps takes responsibility only for the activities listed in this programme.

Forest School Camps insures for its liabilities at law. While all possible care is taken to avoid accidents, Forest School Camps does not insure for personal accident or for loss or damage to personal property. Those who are not already insured for personal accident and for all risks in respect of personal effects, may wish to make their own arrangements.

We do not arrange any special personal insurance cover for camps in countries, including Eire, outside the UK. All staff and children attending camps in the EEA must arrange to take a form E111 with them and, as with camps in the UK, may wish to make their own further personal insurance arrangements for both health and personal belongings cover. Further instructions will be sent to campers accepted for places on camps outside the UK.



## FSC Regional Groups

Over the years, FSC staff have set up informal, regionally based groups which meet and run occasional weekend camps. If you wish to join in the activities of one of these groups please contact the relevant person. SAEs are appreciated.

### Western Region

We plan to run occasional camps in the Gloucester, Somerset and Monmouthshire areas and are looking for campers and staff alike to take an active role.

If you are interested please contact:

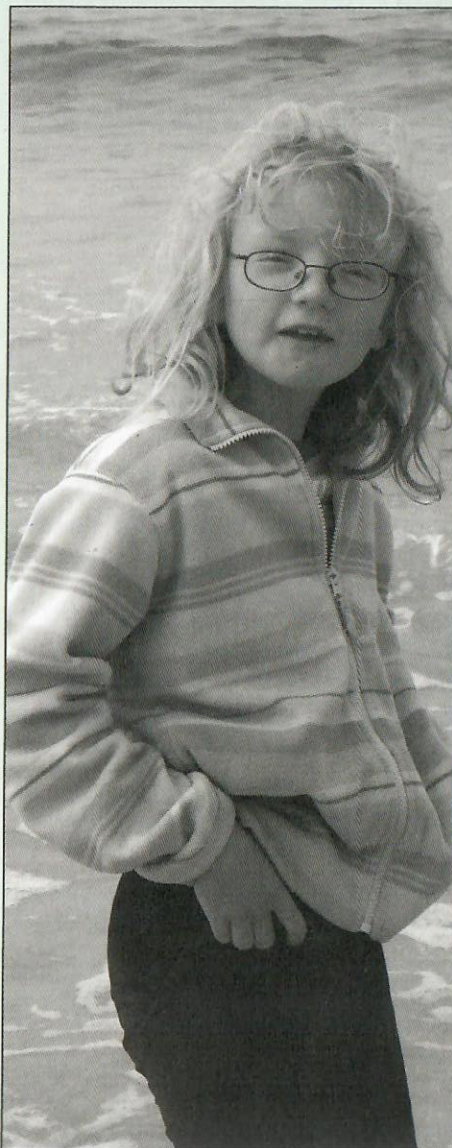
**Sam Kelly**  
**7 Old Ashley Hill**  
**Montpelier**  
**Bristol**  
**B56 5JB**

### Eastern Region

For the more discerning, learning, caring and sharing clan members, night navigators & spelunkers, gastronomes and whittlers.

If you are interested please contact:

**Colin Mutty**  
**10 North Parade**  
**Southwold**  
**Suffolk**  
**IP18 6LP**



## Camp Life



Most of our Summer, Whitsun and Easter camps are standing camps. This means that they are based at one site.

Small camps may have between 25 and 35 children on them, and large camps between 60 and 70.

At standing camps we impart the basic camping skills. The children learn to pitch a tent, to look after their possessions, and to keep them dry. They learn to gather and cut wood, to make fires, and to cook food. Groups of campers from across the age range form clans to take turns in the kitchen preparing the food for the camp.

All this knowledge is consolidated by the two to four-day hike which takes place during the camp. Each age group goes with its staff for a distance suitable for the age and strength of its members. During the hike the children usually plan, buy (with camp funds) and cook their own meals, with help when needed.

Other activities during the camp may include swimming, exploring, night walks, country dancing, campfires, and various FSC games. The end of camp is marked by two major events: Merrymoot and Lodge Common Council.

At Merrymoot the whole camp gathers round a roaring fire to entertain each other with a mixture of songs, sketches and improvisations.

At Lodge Common Council the campers gather around a more formal fire and review the camp, suggesting changes in emphasis or activities for the following year.

After a few standing camps, many children are ready to try an activity camp. Most of these camps are semi-mobile or mobile, travelling on foot, by bicycle, raft, sailboat or canoe. The campers buy their food (with camp funds) every few days and cook in small groups.

Activity camps are generally smaller than standing camps, usually with 15 to 25 children. Some are strenuous, others are easier. The descriptions of the camps give more information. Most longer activity camps are for experienced FSC campers only, i.e. those who have attended at least 2 standing camps, and are marked with an \* on page 39. Further information is available in the individual camp descriptions.



## New Campers

Going to camp for the first time can seem scary. Camp life is very different from the lifestyle most of us are used to, but children fit in very quickly and enjoy the experience of living in an FSC community. Both staff and children are learning all the time. Every camp has its own good and bad times for everyone.

Each year there are some children who are camping for the first time. Staff make every effort to ensure that new children feel at home and secure. Camp is a caring community where everyone tries to be alert to each individual's hopes and fears.

Camp starts on the escort journey, and it is a good idea for children to travel with the escorted party if at all possible. This is where people first start to get to know each other.

Further information and advice will come by post with the 'pre-camp circular' a couple of weeks before camp starts.



### 53 & 57 Spring/Autumn Brazier's Park

**Camp Leaders & Organisers Spring  
& Autumn:** Rad Wagon & Tim Abbott

We continue to develop our relationship with the Community at Brazier's Park near Reading. Over Spring and Autumn weekends we will help support projects in perma-culture and other kinds of sustainable approaches to country living

**Dates Spring:** Fri 28 Apr - Sun 30 Apr

**Dates Autumn:** Fri 22 Sep - Sun 24 Sep

**Ages:** 18+ unless accompanied by a parent/guardian

### 54 & 58 Spring/Autumn Rushall Manor

**Camp Leaders & Organisers Spring:**  
Martin Powell & Emma Whight

**Camp Leaders & Organisers  
Autumn:** Marcos Guillen & Ed Lynch  
Bell

The John Simonds Trust continues its rural community education projects at the Golden Valley site near Pangbourne. We

will help with their path clearing, tree planting and access improvement projects to aid their progress.

**Dates Spring:** Fri 31 Mar - Sun 2 Apr

**Dates Autumn:** Fri 20 Oct - Sun 22 Oct

**Ages:** 16+

### 55 Greyhill International Work Camp

**Camp Leader & Organiser:** Stuart  
Peachey

We will continue the restoration of the 17th Century landscape with an international team of volunteers. In the week after camp, there will be an opportunity to take part in a historical interpretation of the period for local children.

**Dates:** Sun 25 Jun - Sat 1 Jul

**Ages:** 18+ unless accompanied by a parent/guardian



# Conservation & Skills Camps

## 50/52/56 Greyhill Family Camp 1/2/3

**Camp Leaders & Organisers:** Stuart Peachy & Frances Rostron

Greyhill is a beautiful site near Chepstow that is being (re)developed into a 17th Century smallholding for educational use. Come and help us do carpentry on the roof timbers, build pig gates, dig gardens, stonewall, coppicing and hedge laying. Come and learn in a relaxed atmosphere with warm evening fires, talk and singing.

**Dates:** Fri 20 Jan - Sun 22 Jan

**Dates:** Tue 4 Apr - Tue 11 Apr

**Dates:** Wed 31 May - Sun 4 Jun

**Ages:** 18+ unless accompanied by a parent/guardian

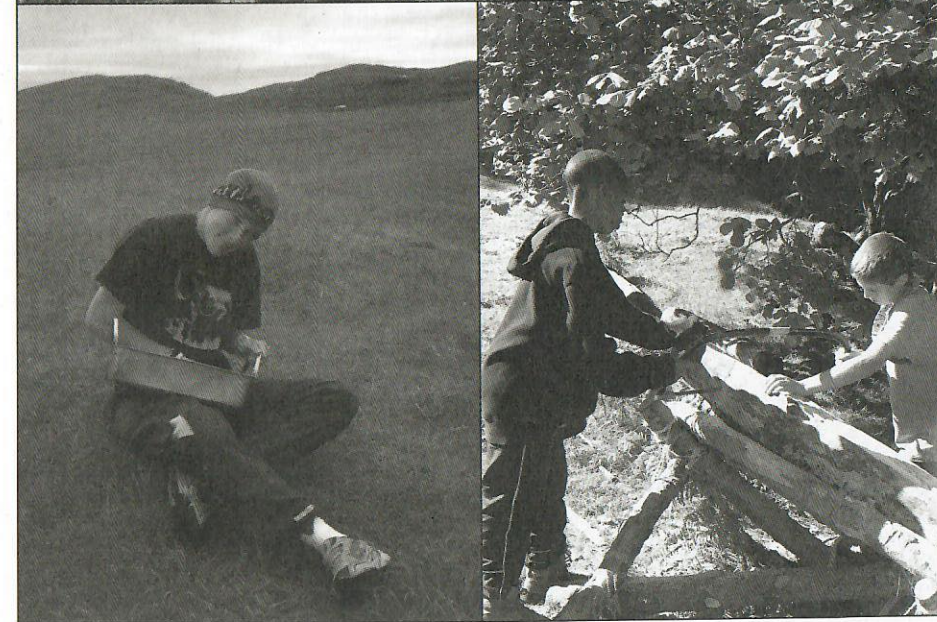
## 51 Danbury Wooding

**Camp Leaders & Organisers:** Leo Murray & Ben Rose

This much loved site is also very heavily used by us at present, so this weekend will be all about how to minimise the impact our camping activities have on the other life of the wood. We'll start with some basic felling and thinning, then move on to try our hands at a spot of artistic dead-hedging, log-stacking and faggot-making. There will also be an Arbournautical training session on the safe use of aerial nets on camp.

**Dates:** Fri 17 Mar - Sun 19 Mar

**Ages:** 18+ unless accompanied by a parent/guardian





# Easter & Earlier

There are often more places available on Easter camps than on Whitsun and Summer camps. The weather at Easter is sometimes challenging but the result is often a particularly close and enjoyable camp.

## 1 Mendip Cave Training

**Camp Chief & Organiser:** FlowStone

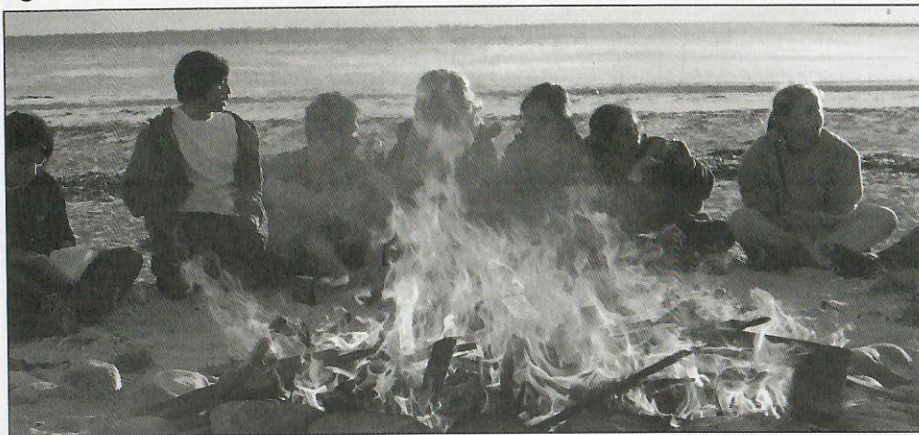
Before each caving camp we organise a training session to develop/refresh our leaders' knowledge of the caves and build on their cave leading skills. In order to increase our reserve of skills and cave knowledge we want Pathfinders with caving experience and staff wanting to get involved in caving to join us for the weekend. Meeting Friday evening, this camp will build on our experience of Mendip caves, including wet Swildon's, in preparation for the full camp 2 weeks later (Camp 2). Contact the non-summer camps enrolment secretary or Flow Stone NOW if you are interested!

**Extra Info:** This camp is for experienced campers only.

**Dates:** Fri 28 Jan - Sun 30 Jan

**Travel:** Campers to pay cost of travel separately

**Ages:** 15.0 - 17.11      **Fees:** £20



## 2 Mendip Caving

**Camp Chiefs:** Giles Vellacott & Helen Spencer

**Organisers:** Esmée Jenkins & Allan Hill

With a caving hut for sleeping, cooking and drying clothes, we'll explore both inside and outside these gentle hills. There will be a night walk, daytime caving and hiking. First time cavers with a love of the mud welcomed. Please apply promptly for this camp.

**Extra Info:** This camp is for experienced campers only.

**Dates:** Wed 15 Feb - Sat 18 Feb

**Travel:** tbc

**Ages:** 11.0 - 17.11      **Fees:** £100

# Conservation & Skills Camps

At camp we sometimes take the fabric of the countryside for granted, but conservation and skills camps give us the chance to redress that balance a little. These camps run throughout the year, generally over weekends, and camps can involve all kinds of tasks: coppicing, hedging, path laying, and repairing or reconstructing traditional farm buildings. The work camps are inexpensive, convivial, and confidence-building, and are run on similar lines to small standing camps.

There are no special qualifications for volunteers. Everyone can contribute, ensuring that a work camp is an enjoyable and memorable experience. In fact, it is a great opportunity to try your hand at glee or catering as well as woodcraft.

Generally, there are no fees charged or expenses paid. You travel independently

to the camp site or collection point, and will be asked to contribute the appropriate amount for the running costs of the camp, usually from £3.00-5.00 per day.

Week long camps may qualify for the residential requirement of the Duke of Edinburgh Award Scheme (Gold). Volunteers from abroad and older campers new to FSC are especially welcome.

Information and enrolment forms may be obtained from the FSC Work Camps Secretary (e-mail is preferred):

**Tim Abbott**  
42 Church St  
Hungerford  
RG17 0JH

[conservation@fsc.org.uk](mailto:conservation@fsc.org.uk)





# Haddenham Stores Centre

## What is Haddenham?

All the equipment used on our camps is stored and maintained at our centre near Ely in Cambridgeshire, where enthusiastic working parties gather regularly throughout the year. In ten months of the year there are Stores weekends, when we clean and repair our equipment and pack and unpack the equipment sent out to camps. At Easter and in August there are House weekends when we work on improving the buildings and the grounds.

## Can I Come?

All the weekends are fantastic social occasions. Additional pairs of hands are always needed and welcome.

At Stores weekends all staff and path finders are welcome. Pathfinders need the written consent of their parent or guardian to attend; an appropriate form is available on the FSC website or can be obtained from Neale Jenvey or Domini Hawthorn.

Please apply for the House Weekend Camps as for other Conservation and Skills camps.

## How Do I Get There?

A minibus usually runs from London, and there are regular attendees travelling from all around the country who may be able to offer lifts, or we could arrange to get you picked up from Ely train station.

## Who Can Tell Me More?

For general queries and any further details of/information regarding the Stores weekends, please contact one of the Stores people:

**Neale Jenvey**  
90 Myddleton Avenue  
London  
N4 2FH

**Domini Hawthorn**  
42 Argyle Street  
Swindon  
Wiltshire  
SN2 8AR

[stores@fsc.org.uk](mailto:stores@fsc.org.uk)

For queries regarding Travel to or from, or Catering at, Stores weekends, please contact Haddenham's Hostesses:

**Tim Abbott**  
42 Church St  
Hungerford  
RG17 0JH

[conservation@fsc.org.uk](mailto:conservation@fsc.org.uk)

**Anna Winter**  
191 Brooke Road  
London  
E5 8AB

[hostess@fsc.org.uk](mailto:hostess@fsc.org.uk)



## 3 Shaken Knot Stirred

**Camp Chiefs:** Dave Monk & Neale Jenvey

**Organiser:** Rory Coase

We shall expand our 10080 minutes in the woods, to sleep in the air, play with fire, shape the earth and walk on water. Whilst absorbing these skills we will have made our own shelters, baked a few cakes and found out which is the best knot to use to swing from tree to tree. All those interested should have an exploring mind and little need of sleep!!

**Dates:** Sat 8 Apr- Sat 15 Apr

**Travel:** Coach from London

**Ages:** 8.0 - 17.11

**Fees:** £165

## 4 Easter at Magdalen

**Camp Chiefs:** Damien Parrott & Tom Walters

**Organiser:** Emma O'Bryen

Is Easter at Magdalen right for you? Are you a) creative b) hardcore c) waterproof? Do you enjoy a) camp b) making new friends c) magic? Do you think Easter is a) in need of song, fire, woodcraft and fun b) long overdue a heatwave c) a good time to go on camp? If you ticked one or more (or even one or less!) of the above then Easter at Magdalen is for you!!!

**Dates:** Fri 7 Apr- Fri 14 Apr

**Travel:** Coach from London

**Ages:** 8.0 - 17.11

**Fees:** £165



## 5 The BFG

**Camp Chiefs:** Vic Doggart & Jimmy Proudlock  
**Organiser:** Nicky Birch

Ahoy there me hearties, welcome aboard the Big Friendly Gurn, a non stop action-packed 4 day camp set in a fabulous forest; a heavenly haven in the heart of Essex. Yes, my sisters and brothers, brush away those wild winter webs: don your glad rags and your dancing feet to kick into splendid spring with a hilarious hot shoe shuffle amongst those beautiful beeches. Bathe in the brilliance of bright bluebells and shards of sparkling light dappling through the leafy green boughs. We invite people of all shapes, sizes and abilities to get together to celebrate our Mayday mayhem in a true internationale gurnological style with a monkey-do and a funky-don't. Hasta la vista mi amigos. See you there.

**Dates:** Fri 28 Apr - Mon 1 May

**Travel:** Coach From London

**Ages:** 6.6 - 17.11

**Fees:** £80

## 6 Venice

**Camp Chiefs:** Roddy Brooks & Stefan Ashford  
**Organiser:** Jan Ashford

Spring will be sprung on the canals on the edge of the Black Country, and so will our footsteps along the towpaths, plus a ride or two on our (t)rusty narrowboat during the days. Evenings and mornings will be spent camping usual FSC standing camp style. We visit the Black Country Living Museum on Monday before the train home. It might be cold and wet at the end of April so come prepared and hope for a heatwave.

**Extra Info:** Escort is early start on

Saturday morning. Deduct £5 if travelling independently to camp.

**Dates:** Early morning Sat 29 Apr - evening Mon 1 May

**Travel:** Train From London

**Ages:** 8.0 - 17.11

**Fees:** £70



## 40 Ribblesdale Associate Camp

**Camp Chief:** Steve Fletcher  
**Organisers:** David & Hilary Hughes

This camp will offer something for any family that likes to be active. The three peaks are all within striking distance and caving will be on offer at nearby Long Churn. There will also be opportunities for swimming, singing and dancing and many other activities. All campers will have the opportunity to try caving - beginners particularly welcome! The scenic Settle to Carlisle railway runs by the camp so leave the car at home and come by train!

**Dates:** Fri 28 Apr - Mon 1 May

## 41 Shining Cliff Associate Camp

**Camp Chief:** Adrian Matthews  
**Organiser:** Lorna English

Dust off those tents, roll up your sleeves and join us in the stunning surroundings of one of the few remaining nuggets of semi-natural ancient woodland in the Derwent valley. Shining Cliff woods hold the memories of decades of by-gone camps (we're not just talking old lats here). It is a rare and beautiful site and we will explore its treasures over this spring weekend. Come prepared to muck in with the madness, stomp in the mud and marvel at how, with spring in mind, our creative juices begin to flow. As usual, this camp will be vegetarian.

**Dates:** Fri 28 Apr - Mon 1 May

## 42 Suffolk Associate Camp

**Camp Chief:** Hazel Powell & Tom Broadhurst  
**Organiser:** Lorna English

# Associate Camps

Join us on a new camp site for a summer associate weekend in the fields of Orchard Cottage in sunny northern Suffolk. We will walk and enjoy the countryside in this lovely part of England. We also will try to do painting and sketching, but will certainly sing and be merry.

**Dates:** Fri 30 Jun - Sun 2 Jul

## 43 Super Suffolk Associate Camp

**Camp Chiefs:** Nelleke van Helfteren & Bernie Ashmore  
**Organiser:** Lorna English

Join us in our revelry as we try to find the wavy Waveney river and have fun among the trees of Orchard Cottage in North Suffolk for the late May bank holiday weekend.

**Dates:** Lunchtime Sat 27 May - until evening Mon 29 May

## 44 Rushall Associate Camp

**Camp Chief:** Deborah Jackson & Peter Jackson  
**Organiser:** Lorna English

All rush to Rushall, an old favourite and a great place for new and pre-owned campers. We will be carrying out a number of cutting edge experiments under the supervision of resident bewildered genius, Professor F. S. See. These include Billy-Bashing (goats will be supplied) and Weekend-Stretching, where we will attempt to slow Time down to its proper speed. Our raucous musical evenings are highly prized by the hard of hearing. This camp is sponsored by Scorchio (the Spanish Met Office), so Blue Skies are guaranteed.

**Dates:** Fri 30 Jun - Sun 2 Jul



# Associate Membership of FSC

Parents and supporters who become Associate Members of FSC receive news of FSC's activities in two newsletters a year, and a copy of the FSC magazine when it is published. There are weekend camps especially for Associate Members and their families. The annual subscription is £5. The Associate Members' Secretary will send you a form and further details on request.

Associate Members and FSC staff are all welcome at associate camps, with or without their children. To apply for an associate camp please use the form sent to all Associate Members, or write directly to the appropriate organiser.

There is no age limit, upper or lower, and these camps are particularly suitable for very young children who may be camping for the first time. Supervision of the children is the responsibility of their parents, and there is no organised travel, allowing us to keep the fees to a minimum.

Parents and children share in the communal cooking, with food and equipment provided by the camp.

There will be many of the usual FSC activities like rally, singing around the campfire, games, walks, and whatever the site and our ingenuity can produce.

## Associate Members' Secretary

**Julia Tozer**  
**10 Pye Terrace**  
**Cambridge**  
**CB4 1DX**

[associates@fsc.org.uk](mailto:associates@fsc.org.uk)

## Southern Camps Organiser

**Lorna English**  
**55 Grosvenor Avenue**  
**Newcastle-upon-Tyne**  
**NE2 2NP**

## Northern Camps Organisers

**David and Hilary Hughes**  
**Malkin House,**  
**Brow Lane**  
**Holmfirth**  
**West Yorkshire**  
**HD7 1RJ**

*A parent who becomes an Associate Member or attends an Associate camp does not give their child any priority on the waiting list to attend any of our child camps.*



## 7 Penny Farthing

**Camp Chief: Dave Monk**

**Organiser: Ama McKenley-Ballantyne**

This is a cycle training weekend for all leg lengths to discover the pleasures of cycle touring: Tea shops, getting lost, getting there and not covering hundreds of miles. We will have different camp sites on Friday and Saturday nights and we will find them over some very quiet Essex roads. On the way we will create our own menus, shop as we go and then cook in small groups using Trangia stoves. We will get our hands dirty with basic bike maintenance and learn to read a map upside down in the sun or rain whilst rolling along the lanes! If you have a shorter leg all your equipment will be transported for you from Witham Station to each site. Whilst riding all you will need is a day sac to carry lunch and your waterproofs. If you have extended legs and are going to the Cork cycle mobile in the summer (Camp 35), you will be expected to have at least rear panniers, carry all your gear and cycle the long way round. Everyone will need a bicycle that has at least 5 gears, is suitable to your stature and is in good working order. Any bicycle that is not in a safe condition at the point of departure will be refused entry to the camp.

**Extra Info:** Recommended for anyone wishing to attend the summer cycle camp (Camp 35). Deduct £5 if travelling independently to camp.

**Dates:** Fri 19 May – Sun 21 May

**Travel:** Train from Liverpool Street to Witham

**Ages:** 11.0 - 17.11

**Fees:** £45



## 8 Great Ouse Canoe Weekend

**Camp Chief: Hazel Powell**

**Organiser: Jenny Wigston**

FSC have a brand new fleet of Kayaks. Come and try them out and see if you can manage to capsize them. This weekend is a good introduction to the way we camp on the summer canoe treks, as we will be shopping and cooking in small groups and learning how to use Trangia & Primus stoves. We will share this riverside site near Newport Pagnell with a staff training group who will join us for campfires in the evening. Beginners to canoeing are welcome.

**Extra Info:** All campers must be able to swim 50 metres. Deduct £5 if travelling independently to camp.

**Dates:** Fri 19 May - Sun 21 May

**Travel:** Train from Euston to Wolverton

**Ages:** 10.0 - 17.11

**Fees:** £45

Please apply for the above camps on BLUE forms. Send them to:  
Mary Brown, 32 Castellain Road, London W9 1EZ  
Please check that these dates coincide with your school holidays



# Whitsun Camps

## 9 Magical Magdalen

**Camp Chief:** Daniel Simon  
**Organiser:** Fiona Clarke

On the beautiful Dorset/Somerset border we will make our home at Magdalen Farm for a week of camp fires, games and woodcraft. There is a river to paddle in and the sea only a hike away. Come ready for two weeks packed into one, bring your ideas, your instruments and songs, leave the city, your iPod and your cares behind. See you in the field.

**Dates:** Sat 27 May - Sat 3 June

**Travel:** Coach from London

**Ages:** 8.0 - 17.11      **Fees:** £195

## 10 Stockton Tardis

**Camp Chiefs:** Blaise Thompson & Kevin Hafter  
**Organiser:** Trish Bell

Our mission: to go to Wiltshire and squeeze a two week camp into seven days. To enter this ancient site and create a lodge of new and experienced campers. Our aim: to blend tradition with innovation to produce a seamless parade of FSC woodcrafting, clanning, singing, dancing, bonding.... If we fail, we'll have had fun trying. No Daleks.

**Dates:** Sat 27 May - Sat 3 June

**Travel:** Coach from London

**Ages:** 6.6 - 14.11      **Fees:** £195



## 11 Going for (Pem)broke

**Camp Chiefs:** Joe Hallgarten & Davy Starkey  
**Organiser:** Thelma Jones

In this special corner of West Wales, we'll turn a big field into a small community. We'll feel the wind in our hair and the wood smoke on our face, walk to the sea in a day, and sleep under the stars. Bring your ideas – we'll try and fit them all into a week. Join us for magic and merriment, and come ready for rainbows. The site is suitable for campers with limited mobility

**Dates:** Sat 27 May - Sat 3 Jun

**Travel:** Train from London

**Ages:** 6.6 - 14.11      **Fees:** £195

## 12 Yorkshire Adventure

**Camp Chief:** Steve Fletcher  
**Organiser:** Lorna Kennedy

From a base camp on the banks of the River Ribble we will set out to explore the nearby Dales. The camp as a whole will decide the route we will take and the distance we will cover. We will carry our equipment with us, buy and cook our food in small groups and stop overnight at different sites. We will return to base camp for Merrymoot and Lodge Common Council. This will be a small camp, particularly suitable for children new to mobiles but who are experienced FSC campers having camped with us at least twice before.

**Dates:** Sat 27 May - Sat 3 Jun

**Travel:** Train From London

**Ages:** 10.0 - 17.11      **Fees:** £195





# Autumn Camps

## 36 Yorkshire Cave Training

**Camp Chief & Organiser:** Flow Stone

Before each caving camp we organise a training session to develop/refresh our leaders' knowledge of the caves and build on their cave leading skills. In order to increase our reserve of skills and cave knowledge we want Pathfinders with caving experience and staff wanting to get involved in caving to join us for the weekend. This camp will build on our experience of Yorkshire caves, including Bull Pot of the Witches, in preparation for the full camp that follows directly (Camp 37). Travel costs to Oxenholme are to be covered by campers – but camp will endeavour to minimise costs by shared transport.

**Extra Info:** This camp is for experienced FSC campers only.

**Dates:** Sat 21 Oct - Tue 24 Oct

**Travel:** TBC

**Ages:** 15.0 - 17.11      **Fees:** £30



## 37 Yorkshire Caving

**Camp Chiefs:** Giles Vellacott & Helen Spencer

**Organiser:** Olly McGregor

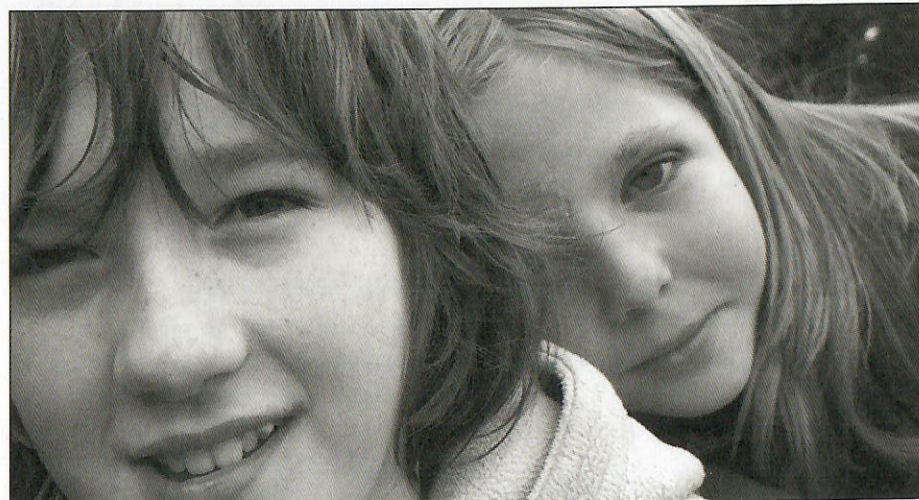
Caving from the Casterton Fell Hut, visiting Bull Pot of the Witches and other Yorkshire specialities – something different after a couple of years in the Mendips and South Devon. This camp follows directly on from the cave training and finishes on Friday to give a chance for recovery before term starts again.

**Extra Info:** This camp is for experienced FSC campers only.

**Dates:** Tue 24 Oct - Fri 27 Oct

**Travel:** TBC

**Ages:** 13.0 - 17.11      **Fees:** £100



## 13 Playstation nah, Hodore weekend yeah!

**Camp Chiefs:** Davy Starkey & Ruth Steed

**Organiser:** Bron Feld

Create a caring, sharing, fun community in 48 hours? We'll try our best - this camp is open to everyone, a particularly good camp for first timers and people with limited mobility. So come prepared for a hectic but relaxed, fun but educational weekend. Build fires, eat in circles, sing songs, sleep under the stars, play games and be amazed by how much fun you can have in a field with people.

**Dates:** Fri 30 Jun - Sun 2 Jul

**Travel:** Coaches pick up at 3.30pm from Brixton

**Ages:** 6.6 - 17.11      **Fees:** £65



## 20 The Red Herring Rides Again

**Camp Chiefs:** Sarah Davies & Vic Daggart

**Organiser:** Marian Armitage

A 10 day fancy dress extravaganza in the heart of sunny Sussex. Real fab food by that top catering duo P and J. Easy access for wheelchairs and other mobility aids. Deep camaradary between old timers and new faces alike. Happy days @ Hodore Farm. Endless fun and exciting activities. Right old knees up, it's a winner, hands down, can't beat it. Rip roaring camp fires, incredible sunsets, mysterious mists and groovy dancing. Good time to be had by all. We welcome pathfinders to help out with a lot of support from the staff group. This camp caters for children and young adults with specialised needs.

**Dates:** Wed 26 Jul - Fri 4 Aug

**Travel:** Coach From London

**Ages:** 6.6 - 17.11      **Fees:** £230

Please apply for the above camps on BLUE forms. Send them to:

Maddy Cooke, 12b Laurier Rd, London, NW5 1SG

Please check that these dates coincide with your school holidays

Please apply for camp 13 on BLUE forms. Send

them to: Maddy Cooke, 12b Laurier Rd,

London, NW5 1SG

Please apply for camp 20 on YELLOW forms and

send them to: Frances Rainford, FSC Stores,

Hill Row, Haddenham, Cambridgeshire, CB6 3PA



# Main Summer Camps

Because of the large number of applications for children's places for these camps, and the need to ensure that the camps are well-balanced and not too large, we regret that we cannot guarantee a place for all applicants wanting to go on main Summer Camps.

## 21 Penybont One: Music Makers & Artisans

**Camp Chiefs:** Carolyn Thompson & Iain Ross

**Organiser:** Jo Cass

A traditional camp with a focus on music and making. By the streams and in the woods we will learn the arts of the woodcraft way, find our voices and listen to the silence. With the skills of woodcraft, storytelling and music making we will build our community with good heart. To all you makers, bards and players, bring your instruments, your voices and your imaginations.

**Dates:** Wed 26 Jul- Tue 8 Aug

**Travel:** Coach from London

**Ages:** 8.0 - 17.11

**Fees:** £290

## 22 Harlech One

**Camp Chiefs:** Fran Rainford & Jack Sloan

**Organiser:** Vanessa Cooke

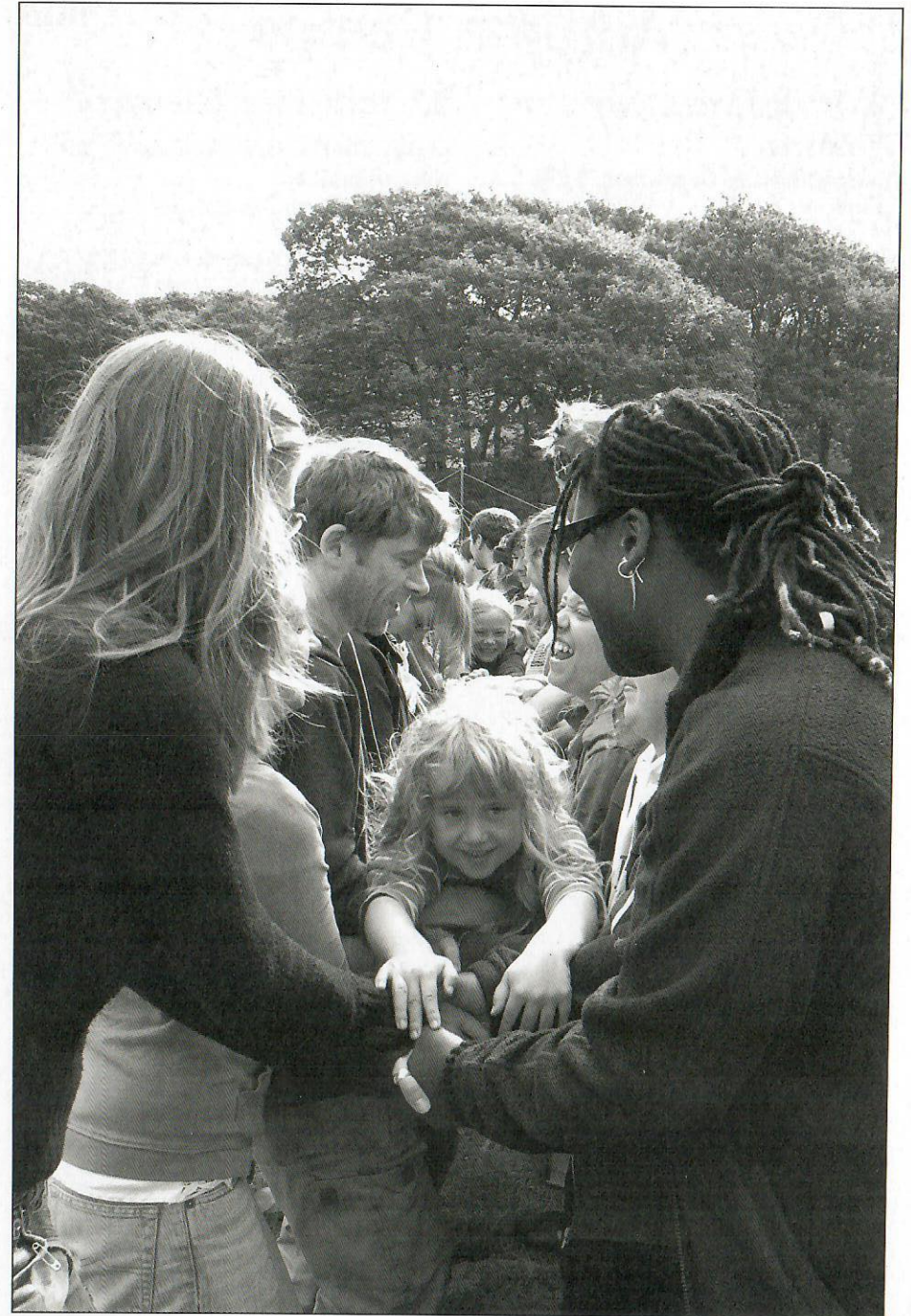
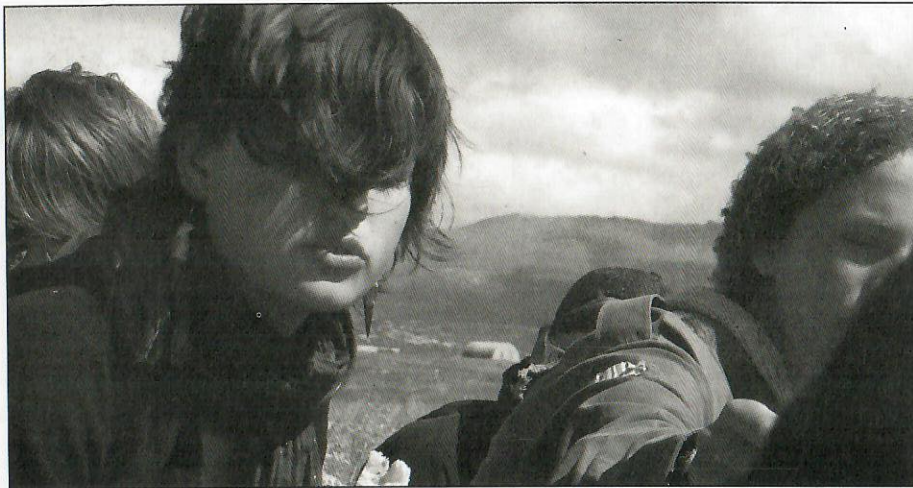
Big? Small? Loud? Quiet? Experienced? Novice? No matter, as long as you're active and up for taking part, then Harlech One is the camp for you. Bring your enthusiasm, energy, walking boots and imagination and you can't go wrong. From the foundations up, we'll build an integrated Lodge for all abilities between the slopes of the Snowdonian Mountains and the ever-changing beach of the North Sea. Are you with us?

**Dates:** Wed 26 Jul- Tue 8 Aug

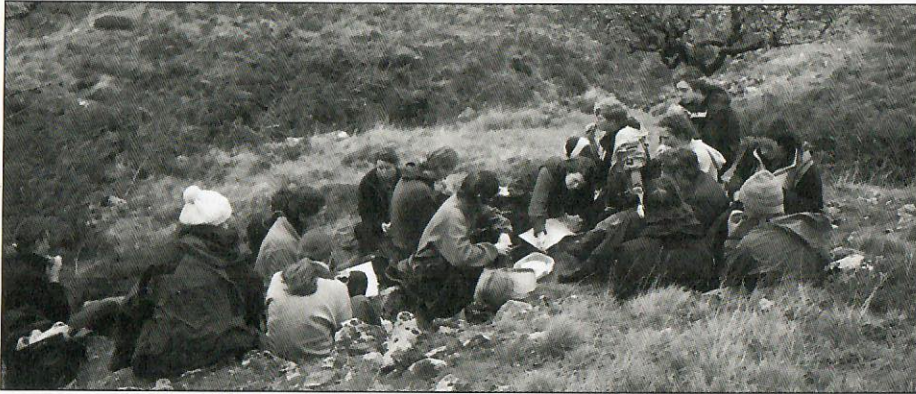
**Travel:** Train From Euston To Crewe

**Ages:** 6.6 - 17.11

**Fees:** £290







### 33 South Cornwall Two

**Camp Chiefs:** Giles Vellacott & Helen Spencer  
**Organiser:** Sonia Ennals

Join us in the toe of England – in our South Cornwall site within hiking reach of the sea. Standing camps are the essence of Forest School – where every one learns how to camp, to care for and feed each other, to build our special community of fun, hard work and relaxation away from that other world outside the camp circle.

**Dates:** Thu 10 Aug - Wed 23 Aug  
**Travel:** Train from Paddington to Truro  
**Ages:** 6.6 - 17.11 **Fees:** £290

### 34 Farndale Two

**Camp Chief:** Lottie Davies  
**Organiser:** Penny Wiles

Farndale - land of moor and mystery... Join us to share the joys of fires, tents, fun and being together. We will be a group of happy adventurers exploring the countryside, creating music, telling stories and making friends while being on the earth in sunshine and moonshine. Come with us!

**Dates:** Thu 10 Aug - Wed 23 Aug  
**Travel:** Train from King's Cross to York  
**Ages:** 8.0 - 17.11 **Fees:** £290

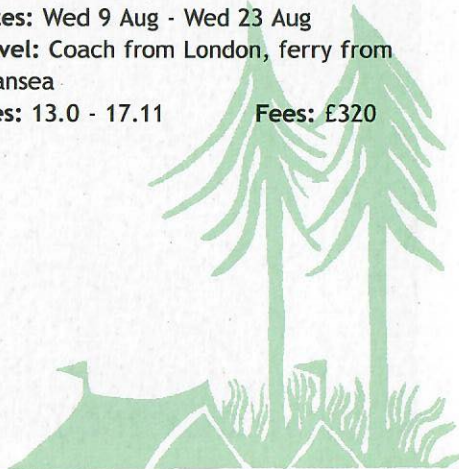
### 35 Cycling in Cork

**Camp Chief:** Anna Malos  
**Organiser:** Polly Rubinstein

It's time to return to the emerald isle and sample its fabled hospitality. Come discover the joys of group cycling. We'll take what fate offers us as we wend our way through Southern Ireland byways. We'll be on the move most days. You'll need to have or borrow a mountain or road bike with a rack and panniers. There is a weekend cycle camp in May (Camp 7) if you want to try out your bike etc. Ring Anna on 020 8533 4188 for more info.

**Extra Info:** This camp is for experienced FSC campers only.

**Dates:** Wed 9 Aug - Wed 23 Aug  
**Travel:** Coach from London, ferry from Swansea  
**Ages:** 13.0 - 17.11 **Fees:** £320



### 23 South Cornwall One

**Camp Chiefs:** Andy Doyle & Leslie Holden  
**Organiser:** Karen Mautner

A full range standing camp set in this dramatic secluded place. We aim to make an active, creative and tolerant community from the skills and spirit everyone can give. Come prepared to enjoy the summer, mud, flood or sun; to meet old and new friends of all ages, and to care for this countryside which gives us adventure, beauty, and so much else.

**Dates:** Wed 26 Jul - Tue 8 Aug  
**Travel:** Train from Paddington to Truro  
**Ages:** 6.6 - 17.11 **Fees:** £290

### 24 Farndale One

**Camp Chief:** John Taylor  
**Organiser:** Leila Murray

We will build our camp on a hill on the edge of the Yorkshire Moors. In our community you will find great friends and adventures as we face the challenges of our environment together. We shall tramp over the heather high above the crags and explore the valleys of this untamed landscape. We will dance and sing around roaring fires before sleeping soundly under the stars.

**Dates:** Wed 26 Jul - Tue 8 Aug  
**Travel:** Train from King's Cross to York  
**Ages:** 8.0 - 17.11 **Fees:** £290

### 25 Borrowbeck One

**Camp Chiefs:** Daphne Carre & Malcolm Keith  
**Organiser:** Phil Gordon

We return to this beautiful and remote valley between the Lake District and the Howgill Fells. This will be a chance to renew old acquaintances and make new

friends. The Beck will tempt us to swim and play while the fells are waiting to be climbed. Come and join this medium sized lodge where the theme will be learning to care for ourselves and the environment.

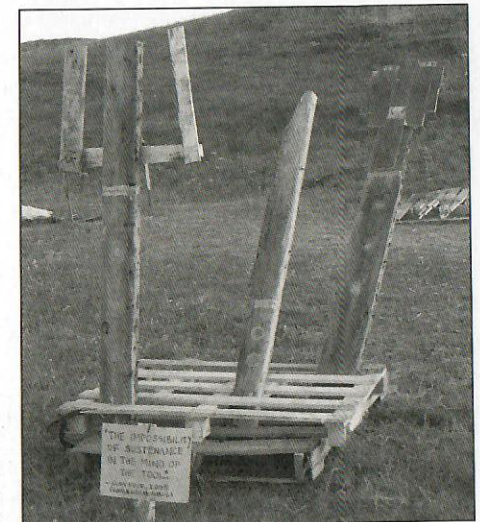
**Dates:** Wed 26 Jul - Tue 8 Aug  
**Travel:** Train from Euston to Oxenholme  
**Ages:** 6.6 - 17.11 **Fees:** £290

### 26 Dinas

**Camp Leaders:** Rod Gritten & Julie Gritten  
**Organiser:** Kate Hall

With a spectacular waterfall backdrop at the end of this secluded Welsh valley, we will think we have stepped back to a time when what we had we made with our own hands, our entertainment came from within ourselves and we knew how to live in harmony with the land. Our camp will be filled with the magic of this place. The legend continues and so does the adventure.

**Dates:** Wed 26 Jul - Tue 8 Aug  
**Travel:** Train from London to Shrewsbury  
**Ages:** 6.6 - 17.11 **Fees:** £290







## 27 Gormire Woods

**Camp Chiefs:** Leo Murray & Rosie McConnell

**Organiser:** Careen Hertzog

An ancient story is about to be retold at a magical new site on the wild fringes of the Yorkshire moors. With a strong focus on bushcraft and glee, we will live together amongst the trees, learning tracking skills, lighting fire by friction, eating wild food and singing from our hearts. We will feel the rhythm, listen carefully, and make decisions as a lodge. Prepare for a physically challenging camp where everyone has a part to play. This is the beginning...

**Extra Info:** This camp is for experienced FSC campers only.

**Dates:** Wed 26 Jul - Tue 8 Aug

**Travel:** Train from London

**Ages:** 8.0 - 17.11      **Fees:** £290

## 28 Wye Canoe?

**Camp Chief:** Neale Jenvey & Steve Fletcher

**Organiser:** Eliza Bruml

This canoe journey will take us on an exciting adventure through the lovely Wye Valley, camping overnight on the banks of the river as we travel 100 miles down the England/Wales border from Glasbury to Chepstow. This will be an active camp with lots of canoeing as well as the usual magical FSC mix of fun, fires and friends, swimming, stargazing and singing. Wye canoe? Join us and find out! Previous canoeing experience is not necessary, although all campers are strongly encouraged to attend the Great Ouse Canoe Weekend (Camp 8).

**Extra Info:** This camp is for experienced FSC campers only and everyone must be able to swim at least 50 metres.

**Dates:** Wed 26 Jul - Tue 8 Aug

**Travel:** Train from London

**Ages:** 10.0 - 17.11      **Fees:** £320

## 31 Penybont Two: the Chop and the Lash

**Camp Chief:** Rad Wagon

**Organiser:** Sue Twigg

A return to use some of our more natural skills has been long overdue. In our camp we will look to build and make as many things as our natural environment will support. Our focus within that will be on the creative construction of shelters for everyone, the use of different woods, natural binding, gathered thatch, and cunning latches. Traditional camp things, like hike and merrymoot will take second fiddle, but we will still have a place for the dramatic, so bring musical instruments, and we will sing our way to a naturally sheltered camp. Come prepared to do a mobile of imagination every day.

**Dates:** Thu 10 Aug - Wed 23 Aug

**Travel:** Coach from London

**Ages:** 8.0 - 17.11      **Fees:** £290

## 32 In the Land of the Red Dragon: Harlech Two

**Camp Chiefs:** Nell Cameron & Gwynnie Griffiths

**Organiser:** Nelleke van Helfteren

Can you smell the wood smoke? Taste the porridge? Hear the singing from the fire and the laughter from the woods? Feel the sun on your head, the rain on your waterproofs? See a circle of new friends? We can. Come to the rugged beauty of North Wales and live it.

**Dates:** Thu 10 Aug - Wed 23 Aug

**Travel:** Train from Euston to Crewe

**Ages:** 8.0 - 17.11      **Fees:** £290

