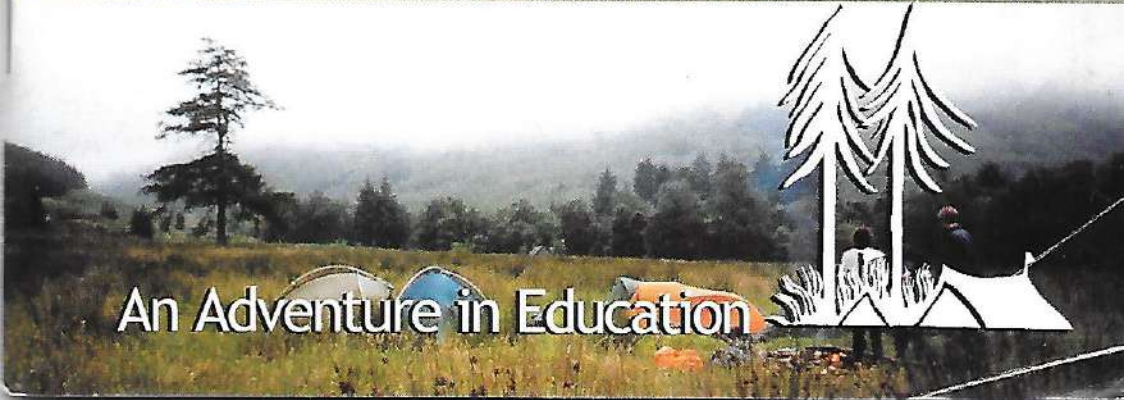


Forest School Camps

Programme

2003



An Adventure in Education

FOREST SCHOOL CAMPS

FSC is not a commercial holiday company, it is an educational charity, and a voluntary organisation. All our officers and staff are unpaid volunteers.



Forest School, which ran in the 1930s, drew its philosophy from progressive educators, from the Woodcraft movements and the Native Americans, from Quakers and others. Special importance was attached to the experience of boys and girls, children and adults, learning to work and play together close to nature.



FSC began in 1947 when former pupils and staff came together, anxious to develop and pass on the ways and values of Forest School which by then had closed.



Our education is about discovering for oneself how to do something, rather than being told in the abstract. Children and staff find themselves in situations that encourage this, the outdoors demands and encourages learning.



We remove unnecessary authority and, with due regard for safety and legality, encourage children to take responsibility and to reach their own decisions on small and not-so-small issues, individually or as a group.



At camp we aim to teach ourselves how to live with independence and responsibility; concern and care for ourselves, other people and the environment; resourcefulness and self-confidence; tolerance and respect. FSC is determined that all people be treated equally regardless of age, gender, sexual orientation, ethnic origin, religion and disability. These are high ideals - we don't always succeed.



A Native American belief is that you will only be in touch with nature if you 'sit and sleep on the earth'. Their feeling for the wholeness of life on our planet is expressed in some of our rituals and the names we give things at camp.

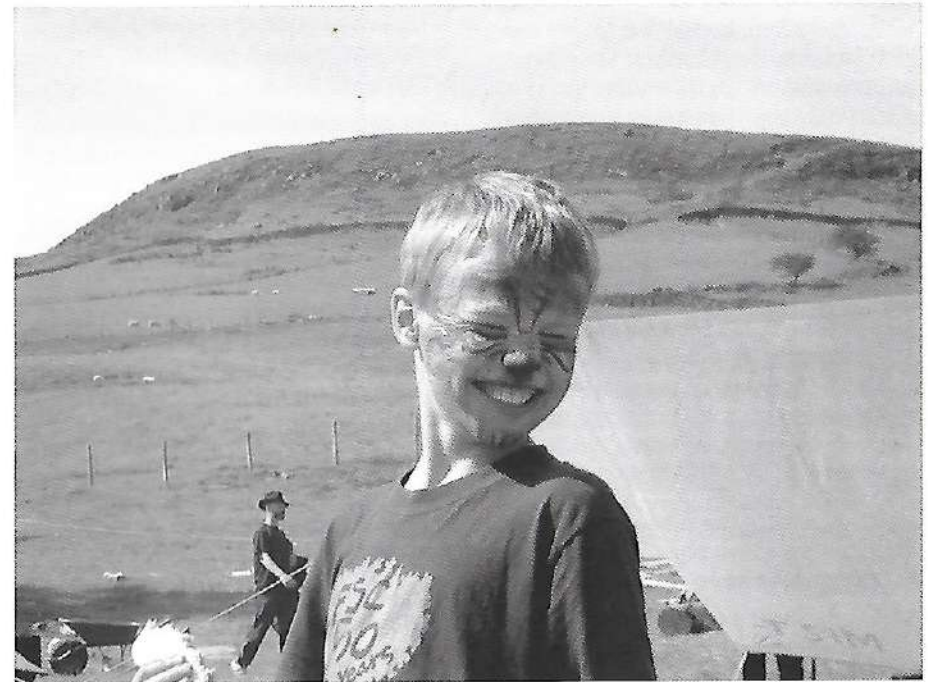


The philosophy developed at camp is practised throughout the administrative organisation of FSC. When you enrol your children you become a part of FSC and this approach. Many staff members begin their association with FSC as parents or campers.



Camp is great fun, though at a practical level it can also be cold and wet, and is often dirty. Despite this, many people camp again and again and again. Join us to find out why!

www.fsc.org.uk



CONTENTS

FOREST SCHOOL CAMPS.....	2	TRAINING CAMPS.....	24
HOW TO ENROL.....	4	HADDENHAM STORES CENTRE.....	26
PARENTS' MEETINGS.....	6	ASSOCIATE MEMBERSHIP OF FSC.....	27
CANCELLATION.....	6	ASSOCIATE CAMPS.....	28
CHILDREN WITH SPECIAL NEEDS.....	7	WORK CAMPS.....	29
AID FUND.....	8	FSC REGIONAL GROUPS.....	32
CAMP LIFE.....	9	PREPARING FOR CAMP.....	33
EASTER AND EARLIER.....	11	KIT LIST.....	34
SPRING CAMPS.....	12	NEW STAFF.....	36
WHITSUN CAMPS.....	14	USEFUL ADDRESSES.....	37
SUMMER CAMPS.....	16	WHERE WE CAMP (MAP).....	38
MAIN SUMMER CAMPS.....	17	CAMPS LISTING 2003.....	39

HOW TO ENROL



Early application is strongly recommended as demand for places is high. While we do deal with applications as they arrive, we also place children to ensure that camps are balanced by age, sex, and experience. Therefore, children are not allocated places in strict order of receipt of applications, and some early applicants may be disappointed.



All children who camp with us are youth members of FSC until they reach the age of 18, when we hope to welcome them as staff.



Members are placed first. New applicants may be placed on a waiting list for one or more years.

- Please apply for summer camps on yellow enrolment forms and for all other camps on blue enrolment forms.
- Please send a separate form for each child and camp; if necessary photocopy extra forms, or download them from our website, www.fsc.org.uk.
- Please send completed forms to the appropriate enrolment secretary. A full list of addresses appears on page 37.
- Please send a separate enrolment fee for each child and camp:
- For camps of 6 nights and shorter, send the full fee. Of this, £30 is treated as a non-returnable deposit, once you are offered a place on a camp of your choice.
- For camps of 7 nights and longer, send £30. This is not returnable once you are offered a place on a camp of your choice.

• Please write the camper's name on the back of your cheque/P.O./money order and make it payable to 'Forest School Camps'.

• We require two stamped addressed envelopes, DL size (21x11 cm) or larger, per application form. One is used to give confirmation of our receipt of your enrolment fee and the second to offer a place at camp.

• For the main summer camps only, the remainder of the fee may be paid in three instalments; please indicate on your enrolment form if you wish to use this method of payment.

• Family discount - for families where three or more children attend summer camps there is a reduction in fees of £15 per child.

• All fees for summer camps must be paid in full by May 31. Fees for Whitsun camps must be paid in full six weeks before the camp begins.

• Fees printed in the programme include return fares from London. For camps of 6 nights and shorter, a deduction of £5 may be made by those travelling separately where this is indicated in the programme. For camps of 7 nights and longer, those travelling separately usually receive a rebate.



If a child misses the escorted party it is the parent's or guardian's responsibility to arrange the camper's transport to the site at their own cost.



Because we try to provide a continuous experience for children, priority for membership is given to siblings of existing members.



New campers are not normally accepted after their fifteenth birthday. There is great demand for older child places, and these are given in preference to existing members. We also may not be able to place all new thirteen and fourteen year-olds due to demand for places.



Children are not normally enrolled on activity camps until they have attended two standing camps, i.e. when they are experienced FSC campers. This applies even if your child has camped with other organisations. The standing camps impart the basic FSC philosophy essential for activity camps.



Please do not ask for more than two children (other than siblings) to camp together as this restricts our ability to offer them a place on their choice of camp. This may reduce the chance of children being placed at all.



At camp, children join their own age group: Elves 6.6 to 7.11, Woodlings 8.0 to 10.11, Trailseekers 11.0 to 12.11, Trackers 13.0 to 14.11, and Pathfinders 15.0 to 17.11 (ages on 1st September). Each group camps separately from the others. Therefore unless siblings or friends happen to be in the same group, it will not be possible for them to share a tent.



PARENTS' MEETINGS

There will be two Saturday meetings in central London for parents, guardians and sponsors whose children are enrolled on this year's camps: Saturday 12 April, for those attending spring, Whitsun or the early summer camps, Saturday 21 June for those going to summer camps. These are opportunities for you to meet some of the staff of the camps and to find out more about FSC. Full details of the meeting will be sent to you by your camp organiser. If you do not have a child enrolled, but would like to attend the June meeting, details may be obtained from the General Secretary after 1 June.

CANCELLATION

If you have to cancel a place at a camp, please write to the camp organiser, giving the reason, as soon as possible. **The enrolment fee is not returnable.** If a place is cancelled within eight weeks of the start of camp it will not be possible to enrol another child and it is therefore unlikely that we will be able to make a refund. FSC does not insure you against cancellation. Holiday insurance (available from most travel agents and banks) would cover you against this risk. Such insurance could also cover loss or damage to a member's equipment, for which FSC cannot accept responsibility.

Please note that the final decision on refunds rests with the Children's Secretary.

POLICE CHECKS

Prior to April 2002 Forest School Camps, as a voluntary organisation, was unable to obtain police checks on its staff members. In the past staff new to the organisation have been asked to declare relevant previous criminal convictions. Since April 2002 and the creation of the Criminal Records Bureau (CRB), voluntary organisations have been enabled to check their staff members for relevant criminal records. The Council of FSC decided in June 2002, that FSC must take up this opportunity. FSC will implement a system to ensure that CRB checks take place as soon as practicable. However, as a result of the pressure of work on the CRB, and the anticipated additional administrative load upon FSC, it is unlikely that all staff on all camps will be checked before the 2004 camping season. We continue to be confident that our internal procedures act as a robust screening device, and will continue to operate them in the future as an important complement to criminal record checks.

NEW SITES

Occasionally in the past, we have been forced to cancel camps (due to Foot and Mouth disease, for instance). Chances of cancellation would be limited if more sites were available.

If you have, or know of, twelve acres or so of land which would be suitable for a camp, whether as an emergency back up or as a regular site, contact:

**Camps Secretary
Dan Brandenburger
camps@fsc.org.uk**

CHILDREN WITH SPECIAL NEEDS



FSC runs some camps suitable for active children with special needs due to learning difficulties or physical disabilities (Camps 4, 13 & 20). We also integrate these children into other camps wherever possible. We can advise parents, guardians or sponsors which camp would be the most suitable for a particular child. We realise that children with disabilities may need a dedicated staff member at camp.

If parents or sponsors feel that their child with disabilities would enjoy camping, we ask them not to let the cost deter them from applying, as FSC may be able to arrange financial assistance. Camp 20 is substantially subsidised by FSC and run specifically for members with learning difficulties.

Parents or sponsors of children with learning difficulties should apply directly to:

**Katy Bevan & Vic Daggart
106 St Thomas's Road London N4
2QW**

Parents or sponsors of children with physical disabilities should apply directly to:

**Trevor Rawcliffe
17A Ariel Road
London NW6 2EA**

SPECIAL ENROLMENTS

Social workers, teachers, care workers, foster parents, and others wishing to enrol children who would benefit from our camps, should contact:

**Joan Wilmot
19B McGregor Road
London W11 1DE**

AID FUND



Every year FSC subsidises places on camp for children of parents who cannot afford the full fees (students, parents on income support, or those with a low income or whose circumstances change). We do sometimes have to turn down children but this is due to a lack of places, not the financial circumstances of parents. We can also lend equipment where necessary (e.g. sleeping bags, waterproofs, boots, etc).

If you would like to discuss this further please write to:

Aid Fund Secretary
Ruth Illingworth
39 Slad Road
Stroud
Gloucestershire GL5 1QR

Alternatively, if you would like to help other children enjoy the experience of FSC, please send donations - cheques payable to 'FSC (Aid Fund)' to the Treasurer (address on page 37).

If you would like to make your donation more tax efficient through use of the Gift Aid scheme, or would like to make a regular donation by standing order, please let the Treasurer know and he will send you the appropriate form.

CAMP LIFE



Most of our Summer, Whitsun and Easter camps are standing camps. This means that they are based at one site.

Small camps may have between 25 and 35 children on them, and large camps between 60 and 70.

At standing camps we impart the basic camping skills. The children learn to pitch a tent, to look after their possessions, and to keep them dry. They learn to gather and cut wood, to make fires, and to cook food. Groups of campers from across the age range form clans to take turns in the kitchen preparing the food for the camp.

All this knowledge is consolidated by the two to four-day hike which takes place during the camp. Each age group goes with its staff for a distance suitable for the age and strength of its members. During the hike the children usually plan, buy (with camp funds) and cook their own meals, with help when needed.

Other activities during the camp may include swimming, exploring, night walks, country dancing, campfires, and various FSC games. The end of camp is marked by two major events: Merrymoot and Lodge Common Council.

EASTER AND EARLIER

At Merrymoot the whole camp gathers round a roaring fire to entertain each other with a mixture of songs, sketches and improvisations.

At Lodge Common Council the campers gather around a more formal fire and review the camp, suggesting changes in emphasis or activities for the following year.

After a few standing camps, many children are ready to try an activity camp. Most of these camps are semi-mobile or mobile, travelling on foot, by bicycle, or by canoe. The campers buy their food (with camp funds) every few days and cook in small groups.



Activity camps are generally smaller than standing camps, usually with 15 to 25 children. Some mobiles are strenuous, others are easier. The descriptions of the camps give more information. Most activity camps are for experienced FSC members only, i.e. those who have attended at least 2 standing camps, and are marked with an * on page 39.

NEW CAMPERS

Going to camp for the first time can seem scary. Camp life is very different from the lifestyle most of us are used to, but children fit in very quickly and enjoy the experience of living in an FSC community. Both staff and children are learning all the time. Every camp has its own good and bad times for everyone.

Each year there are some children who are camping for the first time. Staff make every effort to ensure that new children feel at home and secure. Camp is a caring community where everyone tries to be alert to each individual's hopes and fears.

The camp starts on the escort journey, and it is a good idea for children to travel with the escorted party if at all possible. This is where people first start to get to know each other.

Further information and advice will come by post with the 'pre-camp circular' a couple of weeks before camp starts.

There are often more places available on Easter camps than on Whitsun and Summer camps. The weather at Easter is sometimes challenging but the result is often a particularly close and enjoyable camp.

1 RETURN TO DARTMOOR

CAMP CHIEFS: GILL EMERSON & HILARY CHIVALL

ORGANISER: HILARY CHIVALL

Dartmoor in winter is a bleak and beautiful place. This camp will be cold and it will be wet but it will also give us the opportunity to form an exceptionally warm and caring community. We will laugh a lot, sing even more and what better to warm us up than a good game?

The camp will begin on the moor itself. We will spend two days walking and camping. Then we will descend to the town, and the relative luxury of the Buckfastleigh caving hut, where we will have already stowed our caving gear. We will have three nights in the hut, giving us plenty of time to investigate Dartmoor from under the ground, down the nearby caves.

This camp is for experienced FSC Campers only. First time cavers and winter campers are especially welcome. Please apply promptly and don't forget to pack your adventurous spirit.

DATES: SATURDAY 22 FEBRUARY - THURSDAY 27 FEBRUARY

TRAVEL: TRAIN FROM PADDINGTON

AGES: 8.0 - 17.11 FEES: £175

2 EASTER IN DORSET

CAMP CHIEF: DAPHNE CARRÉ

ORGANISER: JANE PINNER

Come and join a small friendly camp near Sturminster Newton in North Dorset. We will seek out the Easter rabbit, enjoy walks through daffodils, feed the lambs and keep out the cold with roaring camp fires. Two sleeping bags, good waterproofs and sun cream are essentials for Easter camping.

DATES: THURSDAY 17 APRIL - THURSDAY 24 APRIL

TRAVEL: TRAIN FROM LONDON TO GILLINGHAM

AGES: 8.0 - 17.11 FEES: £165

3 FIVE GO SHAKIN'

CAMP CHIEFS: DAVE MONK & BRYSON GORE

ORGANISER: DAN HALL

It could be T-shirts and shorts or 2 pairs of socks, 4 fleeces and 2 sleeping bags. The weather will watch us as we recline in trees, surf nets and find new skills under a self-made shelter kept warm by a fire of rock and steel. A return Quidditch match will be played through exhausting days and moonlit nights. Bring energy, laughter and an exploring mind

DATES: FRIDAY 18 APRIL - FRIDAY 25 APRIL

TRAVEL: COACH FROM LONDON

AGES: 8.0 - 17.11 FEES: £165

Please apply for the above camps on **BLUE** forms and send them to:
Rod & Julie Gritten, Traian Llanfrothen, Penrhyndeudraeth,
Gwynedd LL48 6SW

SPRING CAMPS



4 GURN BABY GURN, ON THE DISCO INFERNO

CAMP CHIEFS: VIC "WUUSTA" DOGGART & GILES "PASTI" LAST

ORGANISER: JAYNE JENKINS

We keep gurning our way to the woods babe with a gurning love inside. Superfly sheet will take you higher. We're gonna knock knock knock on the woods. We are family – we got all our Gurners with me. Get on the bus guys – no need to fuss just leave behind the city stress – come and Gurn with us. So funking groovas of all shapes and fabulous sizes all creeds and crazy colours; celebrate and create Mayday in Gurnalicious styles in the wonderful bluebellied woodlands of warbling Essex – it's only a stone's throw away.

Hurray. Cheers, see you there, Pasti and Wuusta

DATES: FRIDAY 2 MAY - MONDAY 5 MAY

TRAVEL: COACH FROM LONDON

AGES: 6.6 - 17.11 FEES: £80

5 VENICE

CAMP CHIEF & ORGANISER: RODDY BROOKS

A camp walking and boating along canals on the edge of the West Midlands. The overnights will be on one site, standing camp style and then we pack up and visit the Black Country Living Museum on Monday before going home. Bring warm clothes, good waterproofs and footwear and then hope for brilliant sunshine.

Deduct £5 if travelling independently to camp.

DATES: SATURDAY 3 MAY - MONDAY 5 MAY

TRAVEL: TRAIN FROM LONDON TO TIPTON

AGES: 8.0 - 17.11 FEES: £70

6 LAZY CYCLING WEEKEND

CAMP CHIEF & ORGANISER: ANNA MALOS

Join our annual pilgrimage by bike to the rolling hills of Essex and Suffolk. A great introduction to cycle mobiles, tea shops and cycle touring in good company. No need for experience of cycling in groups, just come prepared for rain or shine and to develop a love of the road. All you need is a touring or mountain bike, along with rack and panniers for carrying your kit.

This camp is for experienced FSC campers only.

If you want to attend cycle camps 11 or 29 you are recommended to come on this camp.

Deduct £5 if travelling independently to camp.

DATES: FRIDAY 9 MAY - SUNDAY 11 MAY

TRAVEL: TRAIN FROM LIVERPOOL STREET TO WITHAM

AGES: 12.0 - 17.11 FEES: £50



7 GREAT OUSE CANOE WEEKEND

CAMP CHIEF: HAZEL POWELL

ORGANISER: JENNY WIGSTON

We will learn how to canoe whilst paddling upstream to Newport Pagnell, where we will shop in small groups (using camp funds), work out how to keep our food dry on the return journey and later cook it (wet or dry!) on Primus or Trangia stoves - much as one would on a mobile camp. A staff training group will be camping alongside us on the river bank and we will watch them being given "silly things to do" and maybe attempt some ourselves, although often as not they lead to capsizing and a rapid dash to a towel.

Beginners to canoeing are welcome, but everyone must be able to swim 50 metres.

This active weekend is for experienced FSC campers only.

Deduct £5 if travelling independently to camp.

DATES: FRIDAY 16 MAY - SUNDAY 18 MAY

TRAVEL: TRAIN FROM EUSTON TO WOLVERTON

AGES: 10.0 - 17.11 FEES: £50

Please apply for the above camps on BLUE forms and send them to:
Juliette Flower, 10 Bewick Mews, London SE15 1QR

Please apply for the above camps on BLUE forms and send them to:
Juliette Flower, 10 Bewick Mews, London SE15 1QR

WHITSUN CAMPS



9 WHITSUN IN PEMBROKESHIRE

CAMP CHIEF: LISA HALLGARTEN
ORGANISER: JUDITH DE WITT

We've got an action packed week on a fantastic site with a strong emphasis on making merry. So, come in good voice. Whether we're whittling bows and arrows, hiking to the sea, building fires or rampaging around randomly, together we'll make the hills, valleys and beaches of beautiful Pembrokeshire echo with our song.

DATES: SATURDAY 24 MAY -
SATURDAY 31 MAY
TRAVEL: COACH FROM LONDON
AGES: 6.6 - 17.11 FEES: £195

8 BIG FUN WHITSUN IN WHILTSHIRE

CAMP CHIEFS: DICON MURRAY & LEILA MURRAY
ORGANISER: JEAN NAPIER-FORD

Spring, sunshine, fun, laughter and new found friendship. Sounds inviting? Come along and help create some magical moments. Bring buckets of enthusiasm, ideas, smiles and don't forget your waterproofs. Lots of traditional activities and individual challenges.

DATES: SATURDAY 24 MAY -
SATURDAY 31 MAY
TRAVEL: COACH FROM LONDON
AGES: 6.6 - 14.11 FEES: £195

10 FED UP OF LONDON

CAMP CHIEF: JULIAN FORD
ORGANISER: CAROLINE WHALLEY

Wet whitsun maybe, dry whitsun hopefully, fun whitsun definitely. Come to the heart of Snowdonia and soak up the views, atmosphere and the weather and warm ourselves by a roaring fire.

DATES: SATURDAY 24 MAY -
SATURDAY 31 MAY
TRAVEL: TRAIN FROM LONDON TO CREWE
AGES: 8.0 - 14.11 FEES: £195

11 THE CALL OF THE WHEEL

CAMP CHIEF: ZIGGY MELAMED
ORGANISER: MARIAN ARMITAGE

On this one week cycle camp in the gentle landscape of Wiltshire we will take the lodge with us on the back of our bikes – the moving lodge becomes our home. The cycling will be at the pace of the group – and easy enough for everyone. We will visit some of the ancient and mystical sites of Wiltshire and have fun, learning some basic survival skills along the way. A gentle introduction to the joys of mobile camping, and a chance for a week on the move.

Everyone will need a bike and panniers, and we can provide advice on these (call Ziggy on 020 7607 7134). Can you hear the call of the wheel?

This camp is for experienced FSC campers only.

DATES: SATURDAY 24 MAY - SATURDAY 31 MAY
TRAVEL: COACH FROM LONDON
AGES: 12.0 - 17.11 FEES: £195

12 RIBBLESDALE ADVENTURE

CAMP CHIEF: STEVE FLETCHER
ORGANISER: LORNA KENNEDY

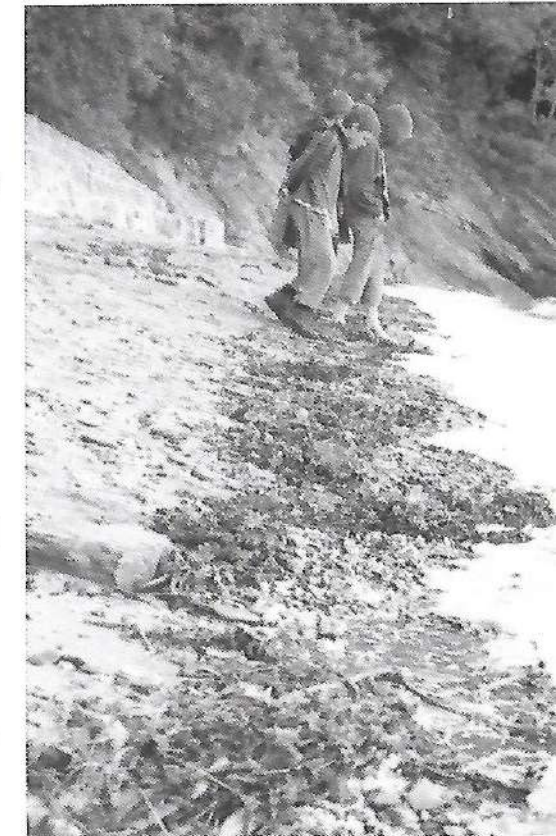
From a base camp near Horton in Ribblesdale, we will set out for a five day hike exploring the surrounding area. We will carry our equipment with us, buy and cook food in small groups and stop overnight at different sites. We will then return to base camp for a

relaxing couple of days with Merrymoot and Lodge Common Council.

This will be a small camp, particularly suitable for children new to mobiles but who are experienced FSC campers.

This camp is for experienced FSC campers only.

DATES: SATURDAY 24 MAY - SATURDAY 31 MAY
TRAVEL: TRAIN FROM LONDON TO HORTON
AGES: 10.0 - 17.11 FEES: £195



Please apply for the above camps on BLUE forms and send them to:
Mary Brown, 32 Castellain Road, London W9 1EZ

Please apply for the above camps on BLUE forms and send them to:
Mary Brown, 32 Castellain Road, London W9 1EZ

SUMMER CAMPS



13 WEEKEND AT HODORE

CAMP CHIEF: BRYSON GORE
ORGANISER: VANESSA COOKE

A gentle weekend but action packed and filled with all the fun of camp. Suitable for first time campers and children with physical disabilities we will sing, dance, and be merry on a site that has become a second home to many campers over the years.

Come and discover the beauties of Hodore and the pleasure of spending time with like-minded folk.

DATES: FRIDAY 4 JULY - SUNDAY 6 JULY
TRAVEL: COACH FROM LONDON
AGES: 6.6 - 17.11 FEES: £65

**Please apply for camp 13 on BLUE forms and send them to:
Juliette Flower, 10 Bewick Mews,
London SE15 1QR**

20 THE RED HERRING MEETS WHITE ELEPHANT (@ HODORE)

CAMP CHIEFS: SARAH DAVIES & VIC DOGGART
ORGANISER: KATY BEVAN

Fine-tuned for the sixth consecutive time that dynamic duo 2003 double dee will be at the helm of the Good Ship Hodore steering it through the rolling hills of splendid Sussex for yet another ten day rollicking, ritous adventure for children and young adults with special needs. Come on board me old hearties for fun, frivolity, love and learning and, of course constant and consistent caring and sharing.

We welcome old faces and new stowaways for daily activities, and regular chores keeping that site ship shape and bristol fashion followed by rip roaring sea shanties round a blazing camp fire with special guests Piglet, Eeyore and Captain Haddock.

Pathfinder helpers are eagerly invited at £60.

DATES: WEDNESDAY 23 JULY - FRIDAY 1 AUGUST
TRAVEL: COACH FROM LONDON
AGES: 6.6 - 17.11 FEES: £215

**Please apply for camp 20 on YELLOW forms and send them to:
Katy Bevan, 106 St Thomas's Road,
London, N4 2QW**

MAIN SUMMER CAMPS

Unfortunately, because of the large number of applications for children's places for these camps, and a shortage of staff to meet this demand, we regret that we cannot guarantee a place for all applicants wanting to go on main Summer camps.



21 RADNOR I

CAMP CHIEFS: ANDY DOYLE & LESLIE HOLDEN
ORGANISER: THELMA JONES

A full range standing camp set in the beautiful landscape by the river Ithon. We aim to make an active, creative and caring community with the skills and spirit everyone can give. Come prepare to enjoy the summer, mud, flood or sunshine and to live in harmony with ourselves and our neighbours.

DATES: WEDNESDAY 23 JULY - TUESDAY 5 AUGUST
TRAVEL: TRAIN FROM PADDINGTON TO WORCESTER
AGES: 6.6 - 17.11 FEES: £285

**Please apply for these camps on YELLOW forms and send them to:
Ruth Steed, 14 Highfields, Forest Row, East Sussex RH18 5AJ**

22 FARNDALE 1

CAMP CHIEF: JOHN TAYLOR
ORGANISER: CATRIONA ANDREWS

Within the scarpa and crags of the North Yorkshire Moors we shall build our home on a hillside. In our community you will find great friendship and fun, as well as challenges and experiences unimagined before. We will tread through the bracken on the high moors and watch the sun rise from the ridge. We shall make music with our voices, and instruments with our hands. We shall explore the woods, the fields and the streams. Come and enjoy this life, so different you can't explain it to your friends back home.

DATES: WEDNESDAY 23 JULY - TUESDAY 5 AUGUST
TRAVEL: TRAIN FROM KING'S CROSS TO YORK
AGES: 6.6 - 17.11 FEES: £285



23 CORK AND KINSALE 1

CAMP CHIEF: FRANCES RAINFORD
ORGANISER: VANESSA COOKE

Jump on a boat and come to explore this new site in Ireland. Mountains, rivers, beaches and back waters will be searched for. Bring energy, ideas, a sense of humor and spend two weeks stretching your imagination, learning new skills and sleeping under the stars. Life will never be the same again. Book early to avoid disappointment.

DATES: TUESDAY 22 JULY - TUESDAY 5 AUGUST

TRAVEL: TO BE CONFIRMED

AGES: 6.6 - 17.11 FEES: £340

24 SOUTH CORNWALL 1

CAMP CHIEFS: IAIN ROSS & CAROLYN THOMPSON

ORGANISER: MARGARET FLETCHER

Our challenge is to create a self sufficient community in a field. Learn to tread lightly on the earth, to be democratic, to make a compromise, learn by doing, teach by being, think of yourself, think of others, live with a good heart. There will be fabulous sunsets, stunning thunderstorms, midges a plenty, glorious singing around blazing fires, stories to tell and stories to hear.

DATES: WEDNESDAY 23 JULY - TUESDAY 5 AUGUST

TRAVEL: TRAIN FROM PADDINGTON TO TRURO OR COACH FROM LONDON

AGES: 6.6 - 17.11 FEES: £285

25 HARLECH 1

CAMP LEADERS: POLLY SANDS & JOE FRANCIS

ORGANISER: CLAIRE-CRAWFORD SMITH

Come young, come old to dance on down in the beautiful hills of North Wales - a place from which you can see the sea. We are sure to find it with a few exciting obstacles along the way.

We will try to create something magical, a place to be yourself, be caring and creative, bring skills and ideas to teach and learn. Don't forget your smiles, party pieces, loads of enthusiasm and several changes of clothes! We look forward to having a fab old time.

DATES: WEDNESDAY 23 JULY - TUESDAY 5 AUGUST

TRAVEL: TRAIN FROM EUSTON TO CREWE

AGES: 8.0 - 17.11 FEES: £285

26 BORROWBECK 1

CAMP CHIEF: DANIEL SIMON

ORGANISER: KAREN MAUTNER

We will be establishing our small community on the banks of the Borrow Beck. Adventurous days of swimming, walking, dancing and woodcraft will give way to beautiful campfires at night under the Cumbrian stars. So come in good voice to make the dales ring once again with our song and laughter.

DATES: WEDNESDAY 23 JULY - TUESDAY 5 AUGUST

TRAVEL: EUSTON TO OXENHOLME

AGES: 8.0 - 17.11 FEES: £285

27 HEBRIDES

CAMP CHIEFS: ANDY FREEDMAN & NICO BROWN

ORGANISER: MIKE COASE

This unique site is in dunes by a long sandy beach on an island in the Outer Hebrides. The wind (and rain!) blow hard here and there are no trees for shelter, so good tents, waterproofs and footwear are essential. Most importantly we will all be looking after each other.

It's a long journey by coach and sea to reach this special and adventurous place where we will make our lodge, doing the things that make camp special, but in some different ways. Living, playing and creating the spirit, we'll spend some time at base camp and the rest exploring the beaches, mountains and neighbouring islands.

This camp is for experienced FSC campers only.

DATES: TUESDAY 22 JULY - WEDNESDAY 6 AUGUST

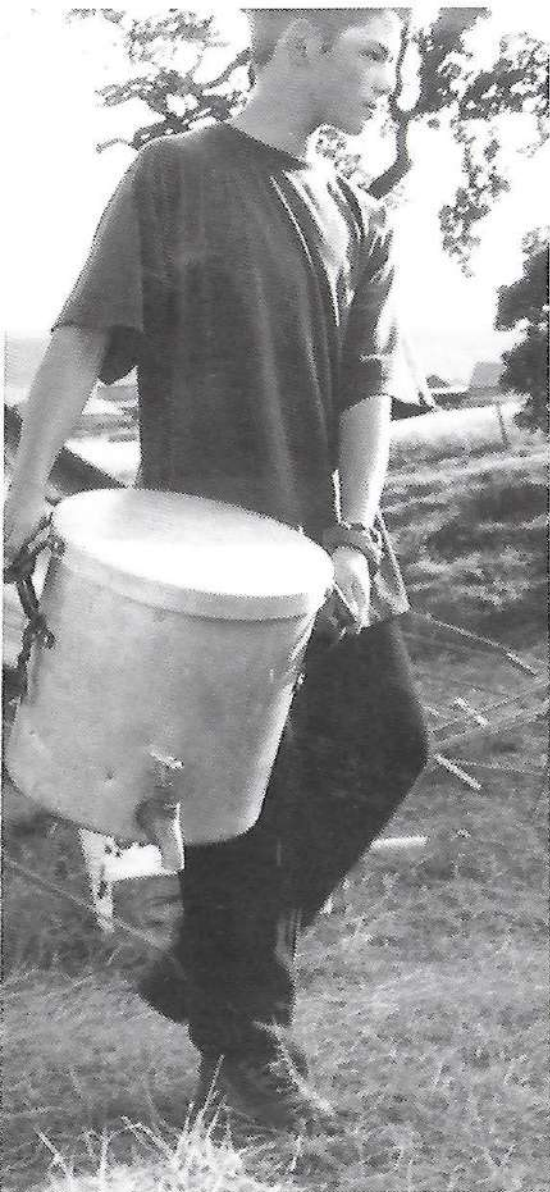
TRAVEL: COACH FROM LONDON

AGES: 8.0 - 17.11 FEES: £340



Please apply for the above camps on **YELLOW** forms and send them to:
Ruth Steed, 14 Highfields, Forest Row, East Sussex RH18 5AJ

Please apply for the above camps on **YELLOW** forms and send them to:
Ruth Steed, 14 Highfields, Forest Row, East Sussex RH18 5AJ



28 PEMBROKESHIRE PIONEERS

CAMP CHIEFS: SAM RAPHAEL & DAMIAN PARROT

ORGANISER: SAM RAPHAEL

This camp is new and exciting. It's for Pathfinders (15-17) and 8-11 year olds.

Are you 8-11? Do you want to go on a mobile that is tailor made for you? You will set the pace, as we discover beaches, cliff-tops, laughter and fun. There will be enough big people to ensure your pack is not too heavy and you will be vital in making sure we play enough games as we mosey on down the coast.

Pathfinders: Do you enjoy hike but want to appreciate gorgeous beaches and cliff-tops at a woodling pace? You'll have time to dive into cool water, sunbathe on golden sands, and make lifelong friends, whilst playing a key role in making this camp magical for the younger pioneers.

There will be a pathfinder/staff planning weekend in July so that we can ensure this camp is everything we want and more. Together we will build a unique community that is more than the sum of its parts. And get a suntan.

If you want to know more, please ring Damien on 020 7732 7147, or Sam on 020 7482 3255.

This camp is for experienced FSC campers only.

DATES: WEDNESDAY 23 JULY - TUESDAY 5 AUGUST

TRAVEL: TRAIN FROM PADDINGTON TO MILFORD HAVEN

AGES: 8.0 - 11.11 & 15.0 - 17.11 FEES: £285

29 "KIDNAPPED" CYCLE MOBILE

CAMP CHIEF: WILL COPPOLA

ORGANISER: KATH MCQUAIL

Join us on an exciting adventure across Scotland. Following the fictional route taken by David Balfour from Mull to Queensferry, as recounted by R. L. Stevenson in "Kidnapped", we start by crossing by ferry from Oban to the Isle of Mull, we return to the mainland at Lochaline. Where we will then head east, passing through Glencoe, Rannoch Moor and Stirling. Some of the country is wild and without metalled roads, offering challenging riding. Everyone prepared to join the adventure and learn to look after each other and their bikes is welcome.

You need a mountain bike, and a sturdy rack and panniers. For advice on bikes and equipment or to discuss the camp please call Will or Kath on 020 7607 0501. There will be a weekend cycle camp in May (Camp number 7).

The weekend will be an opportunity to learn the basics of cycling in groups and for everyone to refresh their cycle maintenance skills (please attend if you are able).

This camp is for experienced FSC campers only.

DATES: WEDNESDAY 23 JULY - TUESDAY 5 AUGUST

TRAVEL: TRAIN OR COACH FROM LONDON TO OBAN, RETURNING FROM EDINBURGH

AGES: 13.0 - 17.11 FEES: £320

31 RADNOR 2

CAMP CHIEFS: GILES VELLACOT & HELEN SPENCER

ORGANISER: SUE TWIGG

Set in the rolling hills of mid-Wales, this site has a fine swimming river, kingfishers and sometimes otters. We will be teaching traditional camp skills, building ovens, growing from the experience of looking after each other, trying to discover why we keep coming back.

DATES: THURSDAY 7 AUGUST - WEDNESDAY 20 AUGUST

TRAVEL: TRAIN FROM PADDINGTON TO WORCESTER

AGES: 6.6 - 17.11 FEES: £285

32 FARNDALE 2

CAMP CHIEF: RAD WAGON

ORGANISER: DOM HAWTHORN

A Farndale day. Sunlight streams in over Blakey Ridge; tea round; breakfast; someone improves the sound of music by frogs; elaborate plot to take over rally succeeds; expedition to Potters Nab for packed lunch; early afternoon floating sticks down gully stream; late afternoon dancing to guitars, squeeze box, and tin whistle; supper in Guys and Dolls costume; evening fire with Coyote tales by Morning Dove and songs aplenty. We'll do a mobile of imagination every day.

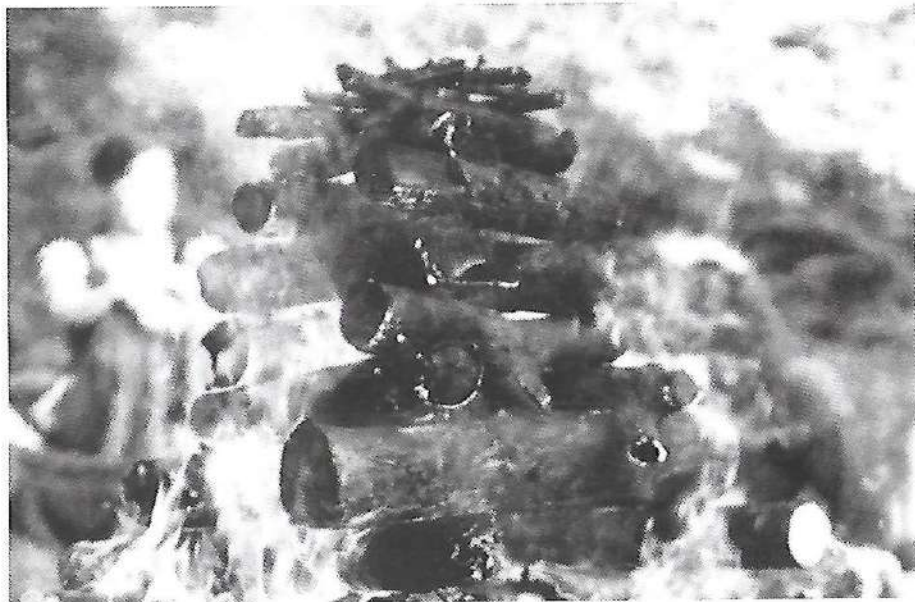
DATES: THURSDAY 7 AUGUST - WEDNESDAY 20 AUGUST

TRAVEL: TRAIN FROM KING'S CROSS TO YORK

AGES: 8.0 - 17.11 FEES: £285

Please apply for the above camps on **YELLOW** forms and send them to:
Ruth Steed, 14 Highfields, Forest Row, East Sussex RH18 5AJ

Please apply for the above camps on **YELLOW** forms and send them to:
Ruth Steed, 14 Highfields, Forest Row, East Sussex RH18 5AJ



33 CORK AND KINSALE 2

CAMP CHIEF: FRANCIS COOPER
ORGANISER: PENNY WILES

Knockaphreaghane, Ballincourneenig, Garranewaterig, Ballyhooleen, Belgooly, Skevanish, Knocklucy, Cork, Kinsale and Coolsheskin. Brush up your Gaelic, we're off to Ireland for a full standing camp on the Emerald Isle. It's a long way to go but as they say, "Bidh an t-ubhal as fhearr air a'mheangan as airde." The best apple is on the highest bough. An ni chi na big, 's e ni na big!

DATES: WEDNESDAY 6 AUGUST -
WEDNESDAY 20 AUGUST
TRAVEL: TO BE CONFIRMED
AGES: 8.0 - 17.11 FEES: £340

34 SOUTH CORNWALL 2— IN THE SHADOW OF THE LIZARD

CAMP CHIEFS: GWYNNIE GRIFFITHS
& NELL CAMERON
ORGANISER: BRON FELD

In this land of magic and mystery we'll build our lodge. On our own hillside, bordered by woods and a stream, we'll make laughter, friendship and song. Create slippery slides, roaring fires and cosy dens. Summer storms and summer sun will accompany our adventures as we explore ancient pathways, discover secret coves, sparkling sea and our true selves.

DATES: THURSDAY 7 AUGUST - WEDNESDAY
20 AUGUST
TRAVEL: TRAIN FROM PADDINGTON TO
TRURO OR COACH
AGES: 6.6 - 17.11 FEES: £285

35 MUD, LOVE AND RHETORIC

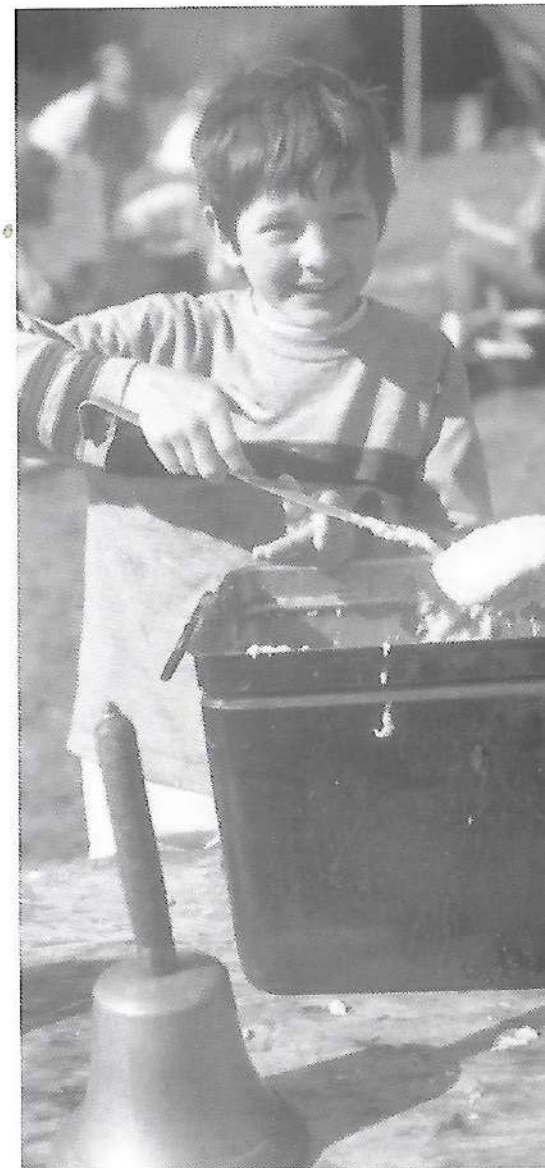
CAMP CHIEF: FLOW STONE
ORGANISER: LIZA BRUML

... After days wandering in the wild hills they followed the dragons back to a cottage in the valley below, from there they followed the water on its wonderous journey into the hollow hills. After emerging, the bright sunlight dazzling their eyes, they set off on their homeward journey to hot baths and soft beds... Leaving Garsdale we will walk for four days to Bull Pot Farm, our base for the next few days caving. The last four days will be spent walking to Horton-in-Ribblesdale. We won't have to carry our caving clothes while walking.

This camp is for experienced campers but new cavers are especially welcome. The walking will be friendly, anyone who WANTS to will be able to do it. There will be training for the caving element of this camp on the 10/11 May open to all staff. Those people wanting to staff this camp are especially encouraged to attend.

This camp is for experienced FSC campers only.

DATES: WEDNESDAY 6 AUGUST -
WEDNESDAY 20 AUGUST
TRAVEL: TRAIN FROM KING'S CROSS TO
GARSDALE
AGES: 11.0 - 17.11 FEES: £320



Please apply for the above camps on **YELLOW** forms and send them to:
Ruth Steed, 14 Highfields, Forest Row, East Sussex RH18 5AJ

TRAINING CAMPS

36 DANBURY SKILLS CAMP

CAMP LEADERS: DAVE MONK & LUCY ROBERTS

ORGANISER: LUCY ROBERTS

We will be running a weekend to teach skills to each other, in the beautiful setting of Danbury Woods. We can share firelighting, spoon carving, charcoal burning, and anything else woodcrafty. Come prepared with things you can teach, or skills you wish to learn.

DATES: FRIDAY 27 JUNE - SUNDAY 29 JUNE

AGES: 16+ FEES: AS FOR WORKCAMPS



Please apply for the above camp on **BLUE** forms and send them to: Juliette Flower, 10 Bewick Mews, London SE15 1QR

37 MOUNTAIN SKILLS CAMP

CAMP CHIEF: AGGIE FORSTER

ORGANISER: RUTH HALLGARTEN

A week in the mountains at the end of the summer. This is a camp for Pathfinders and staff. Plan day walks or overnight hikes. Practice mountain navigation day or night. Discuss and practice river crossings and simple rope techniques for safety on steep ground. Compare kit and pare it down to the bare necessities. This camp is about learning and consolidating personal skills rather than group leadership. It should give you the confidence to take to the hills with family or friends and can be seen as a follow-on from BELA or maybe leading up to it.

This is not a traditional children's camp it is a training camp for pathfinders and staff. There will be substantial numbers of staff.

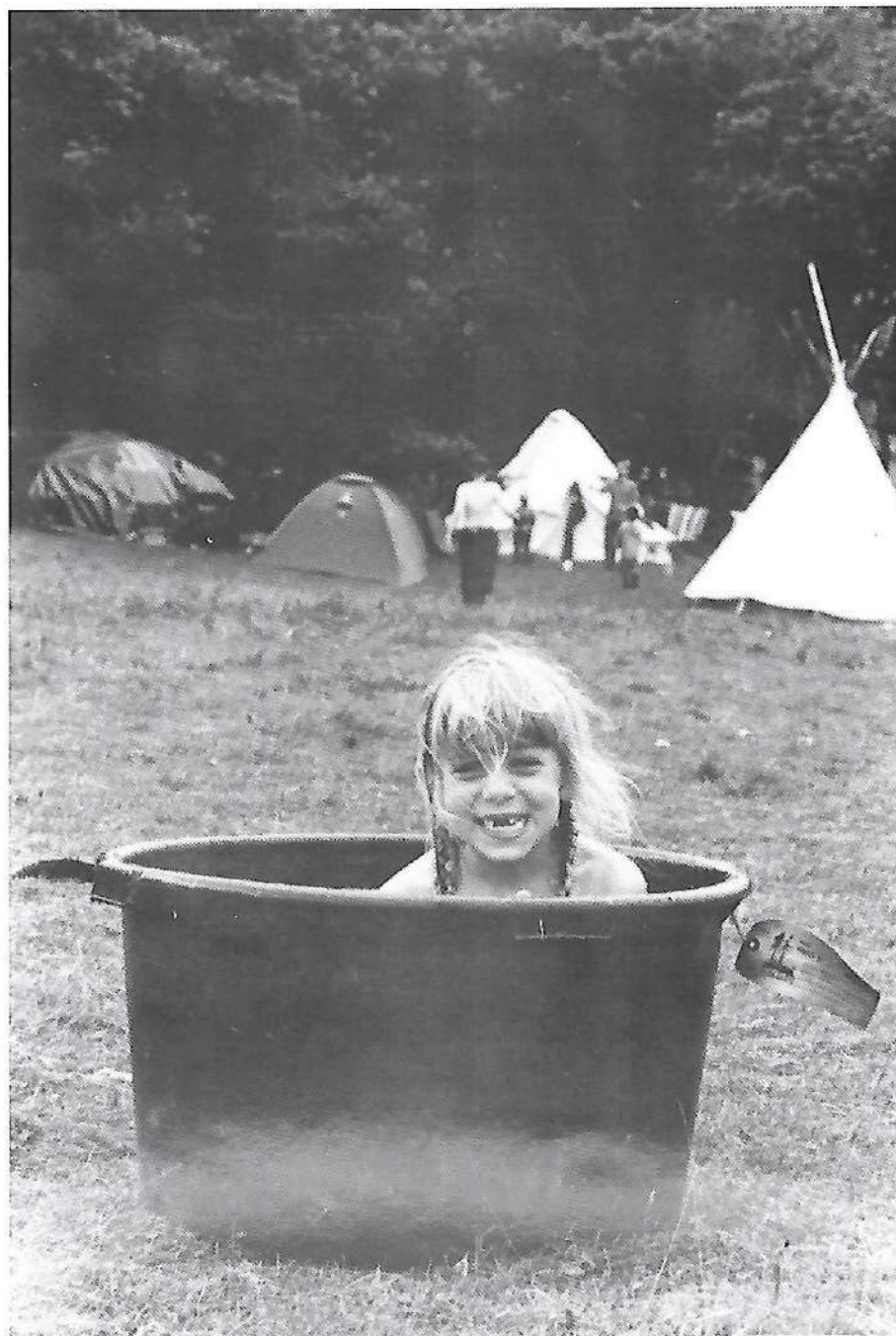
This camp is for experienced FSC campers only.

DATES: SAT 23 AUGUST - FRI 29 AUGUST

TRAVEL: TRAIN FROM EUSTON TO PENRITH

AGES: 15.0 -17.11 FEES: £200

Please apply for the above camp on **YELLOW** forms and send them to: Ruth Steed, 14 Highfields, Forest Row, East Sussex RH18 5AJ



HADDENHAM STORES CENTRE



All the equipment used on our camps is stored and maintained at our centre near Ely in Cambridgeshire, where enthusiastic working parties gather monthly throughout the year to repair any damage and to pack the equipment for the camps.

Additional pairs of hands are always needed, both to deal with the camping equipment and to improve the structure of the buildings.

All staff are invited to come and help pack - it is always to your advantage on camp!

Transport can usually be provided from London, Sheffield or Ely.

We have two work camps this year to work on the property and the grounds - one at Easter and the other over the August bank holiday.

For further details of these or regular maintenance weekends see camps 54 & 58 or contact:

Dave Monk
178 Upland Road
London SE22 0DQ
stores@fsc.org.uk

If you have any drawings or photographs from your camp why not send them in for the next programme?

**Mark them clearly for a safe return and send to:
Bea Christie, 131 Mountview Road, London N4 4JH**

ASSOCIATE MEMBERSHIP OF FSC

Parents and supporters who become Associate Members of FSC receive news of FSC's activities in two newsletters a year, and a copy of the FSC magazine when it is published. There are weekend camps especially for Associate Members and their families. The annual subscription is £5. The Associate Members' Secretary will send you a form and further details on request.

Associate Members and FSC staff are all welcome at associate camps, with or without their children. To apply for an associate camp please use the form sent to all Associate Members, or write directly to the appropriate organiser.

There is no age limit, upper or lower, and these camps are particularly suitable for very young children who may be camping for the first time. Supervision of the children is the responsibility of their parents, and there is no organised travel, allowing us to keep the fees to a minimum.

Parents and children share in the communal cooking, with food and equipment provided by the camp.

There will be many of the usual FSC activities like rally, singing around the campfire, games, walks, and whatever the site and our ingenuity can produce.

Associate Members' Secretary

Julia Tozer
10 Pye Terrace
Cambridge
CB4 1DX

associates@fsc.org.uk

Southern Camps Organiser

Lorna English
55 Grosvenor Avenue
Newcastle-upon-Tyne NE2 2NP

Northern Camps Organisers

David and Hilary Hughes
Malkin House, Brow Lane,
Holmfirth, West Yorkshire HD7 1RJ

A parent who becomes an Associate Member or attends an Associate camp does not give their child any priority on the waiting list to attend any of our main camps.



ASSOCIATE CAMPS

40 SHINING CLIFF ASSOCIATE CAMP

CAMP CHIEF: ADRIAN MATTHEWS
ORGANISER: LORNA ENGLISH

'For summer is a comin' in and winter's gone a-way-o' (Trad. Anon.) We may get bluebells, we may get mud, we might access a web on the site, even if it's only a spider's, or we might surf a cargo net. We will cook dreamy meals and dream mealy cooks so come and be confused over a long, luscious weekend, and let's hit the summer running. Oh, and please bring the parents. On a foodie note: we like them chickens and cows so won't be eating them.

DATES: FRIDAY 2 MAY - MONDAY 5 MAY

41 RIBBLESDALE ASSOCIATE CAMP

CAMP CHIEF: STEVE FLETCHER
ORGANISERS: DAVID & HILARY HUGHES

This camp will offer all campers the opportunity to experience the subterranean delights of potholing under the nearby limestone slabs. There will also be the possibility of a walk up nearby Pen-y-Gent. The emphasis will be on building the community and enjoying ourselves. No previous caving experience is needed.

DATES: FRIDAY 2 MAY - MONDAY 5 MAY

42 DANBURY WOODS ASSOCIATE CAMP

CAMP LEADERS: TOM BROADHURST & HAZEL POWEL
ORGANISER: LORNA ENGLISH

Come and enjoy the delight of this

Essex woodland site. We are camping soon after bluebell time and will experience woodland life over a balmy June weekend. Please bring along any games, ideas and musical instruments.

DATES: FRIDAY 6 JUNE - SUNDAY 8 JUNE

43 RUSHALL ASSOCIATE CAMP

CAMP CHIEFS: PETER & DEBORAH JACKSON WITH JULIA WILSON
ORGANISER: LORNA ENGLISH

An old favourite and an excellent introduction to FSC - this family camp is in a field on the edge of a wood on a working farm in the middle of beautiful Berkshire countryside. We can walk to a stream if the July weather is scorching and shelter under the trees if it's not. Come to sing and be merry and devise ingenious ways to enjoy a summer weekend.

DATES: FRIDAY 4 JULY - SUNDAY 6 JULY

44 CUMBRIA ASSOCIATE CAMP

CAMP CHIEF: STEVE FLETCHER
ORGANISERS: DAVID & HILARY HUGHES

We are returning to this beautiful site by Shap Fell to swim in the rock pools by day and observe the stars by night. Although this will be a short camp, it will be packed with activities.

DATES: FRIDAY 4 JULY - SUNDAY 6 JULY

WORK CAMPS



At camp we may take the fabric of the countryside for granted, but work camps give us the chance to redress that balance a little. Work camps run throughout the year, generally over weekends. Work camps can involve all kinds of tasks: coppicing, hedging, path laying, and repairing or reconstructing traditional farm buildings. FSC work camps are cheap, convivial, and confidence-building. They are run on similar lines to small standing camps.

There are no special qualifications for volunteers. Everyone can contribute to ensure that a work camp is an enjoyable and memorable experience. In fact, it is a great opportunity to try your hand at glee or catering as well as woodcraft.

Generally, there are no fees charged or expenses paid. You travel independently to the camp site or collection point, and will be asked to contribute the appropriate amount for the running costs of the camp, usually about £3.00-5.00 per day.

Week-long camps may qualify for the residential requirement of the Duke of Edinburgh Award Scheme (Gold). Volunteers from abroad and older campers new to FSC are especially welcome.

Information and enrolment forms may be obtained from the FSC Work Camps Secretary (an A5 Stamped Addressed Envelope is appreciated):

Tim Abbott
5 Bankside, South Croydon,
Surrey, CR2 7BL

50 & 53 GREYHILL FAMILY WORK CAMP

CAMP LEADER & ORGANISER:
STUART PEACHEY

Greyhill is a beautiful site near Chepstow that is being (re)developed into a 17th Century smallholding for educational use. Come and help us do carpentry on the roof timbers, build pig gates, dig gardens, stonewall, coppice and lay hedges. Come and learn in a relaxed atmosphere with warm evening fires, talk and singing.

DATES: FRIDAY 7 FEBRUARY - SUNDAY 9 FEBRUARY AND SATURDAY 12 APRIL - THURSDAY 17 APRIL
AGES: 18+

51 DANBURY WOODING

CAMP LEADER & ORGANISER: LUCY ROBERTS

The wooded site FSC uses near Danbury is in need of some woodland management. We plan to start this work with some pruning and tree-felling, which will help the wood to grow stronger and healthier.

DATES: FRIDAY 28 MARCH - SUNDAY 30 MARCH
AGES: 18+

52 & 60 RUSHALL MANOR WORK WEEKENDS

CAMP CHIEF: RAD WAGON
ORGANISER: NICK PORTER

The John Simmonds Trust continues its rural community education projects at the Golden Valley site at Pangbourne near Reading. FSC plans two maintenance weekends in the Spring and Autumn to aid their progress.

DATES: FRIDAY 4 APRIL - SUNDAY 6 APRIL
FRIDAY 24 OCTOBER - SUNDAY 26 OCTOBER
AGES: 16+

54 ON YOUR 'EADS 1

CAMP LEADERS & ORGANISERS: MEURIG HUGHES & JULIAN BRANDON-JONES

The FSC stores centre at Haddenham has been in existence for half as long as FSC itself! And you haven't been there yet? For a while our site was self-maintaining but it is now a time of revival; hand crafted doors are to be constructed for the Long Barn, the trees need tender attention, various eco-projects are being hatched and there is the perennial task of re-decoration.

Join us to share skills; enjoy the comfort of a building while still camping.

DATES: FRIDAY 18 APRIL - MONDAY 21 APRIL
AGES: 16+

55 & 59 BRAZIER'S PARK WORK WEEKENDS

CAMP CHIEF: RAD WAGON
ORGANISER: TIM ABBOTT

The community at Brazier's Park at Goring near Reading try to live their lives through permaculture, a form of sustainable living. They also use their knowledge to teach others. We plan to help them along their path, by running two short maintenance weekends in the late spring and early autumn.

DATES: FRIDAY 2 MAY - SUNDAY 4 MAY
FRIDAY 26 SEPTEMBER - SUNDAY 28 SEPTEMBER
AGES: 16+

56 FARNDALE PATH-GRAFTING

CAMP LEADER & ORGANISER: RAD WAGON

One of our main sites is in urgent need of repair to ensure that we can continue to camp. Come prepared to do some digging in the day then kick back in a beautiful summer's evening following traditional FSC pursuits.

DATES: FRIDAY 6 JUNE - SUNDAY 8 JUNE
AGES: 16+

57 GREYHILL INTERNATIONAL WORK CAMP

CAMP LEADER & ORGANISER: STUART PEACHEY

We will continue the restoration of the 17th Century landscape with an international team of volunteers. In the week after camp, there will be an opportunity to take part in a historical interpretation of the period for local children.

DATES: SUNDAY 6 JULY - FRIDAY 18 JULY
AGES: 18+

58 ON YOUR 'EADS 2

CAMP LEADERS & ORGANISERS: JOEL SMITH & JOHN DURHAM

This is the silver jubilee for our FSC Stores Centre at Haddenham! And you haven't been there yet? For a while our site was self-maintaining but it is now a time of revival; the trees need tender attention, various eco-projects are being hatched and there is the perennial task of redecoration.

We might be creating new works of art to mark our jubilee. Join us to share skills; enjoy the comfort of a building whilst camping.

DATES: FRIDAY 22 AUGUST - MONDAY 25 AUGUST
AGES: 16+



Under 18's please apply for the above camps on Yellow Forms and send them to Tim Abbott, 5 Bankside, South Croydon, Surrey, CR2 7BL

Under 18's please apply for the above camps on Yellow Forms and send them to Tim Abbott, 5 Bankside, South Croydon, Surrey, CR2 7BL

FSC REGIONAL GROUPS

Over the years, FSC staff have set up informal, regionally based groups which meet and run occasional weekend camps. If you wish to join in the activities of one of these groups please contact the relevant person. SAEs are appreciated.

WESTERN REGION

We plan to run occasional camps in the Gloucester, Somerset and Monmouthshire area and are looking for campers and staff alike to take an active role. If you are interested please contact:

Andy Freedman
39 Slad Road
Stroud, Glos GL5 1QR

EASTERN REGION

For the more discerning, learning, caring and sharing clanmembers, night navigators and spelunkers, gastronomes and whittlers. If you are interested please contact:

Colin Muttly, c/o 10 North Parade,
Southwold, Suffolk IP18 6LP

PEAK REGION

We hope to run at least one camp in the Derbyshire Peak District this summer.

If you are interested please contact:

Rosemary Casserley
141 Southleigh Road
Leeds LS11 5XR

PREPARING FOR CAMP

EQUIPMENT.

You probably already own most of the things you need for a standing camp. Warm, well-worn clothing is required. The only essential extras are a sleeping bag and really effective waterproofs; we don't always take shelter when it rains. We ask that families who continue to camp with us try to supply at least one two-person tent. Full details of what to bring to standing camps are given in the kit list on page 34. For mobile camps some more specialist equipment may be required; a few notes appear on page 35, but full details will be sent to you by your camp organiser.

LIFE JACKETS

We make it a firm policy that life jackets or buoyancy aids are worn when children are canoeing, sailing or rafting with FSC. We will provide them. Our policy is not to wear buoyancy aids when narrow-boating.

TRAVEL

Escorted parties travel between London and our camps. In the case of rail travel, the expected departure and destination stations are listed under each camp. Final details of times and meeting places will be sent in a pre-camp circular a few weeks before camp. Campers may arrange to join the escorted party at any station at which the train stops, but those doing so will be asked to purchase their own tickets to and from the destination.

TETANUS

We ask that all campers are fully protected against tetanus well before camp. The pre-school tetanus course lasts for ten years and the school-leaving booster lasts until 25.

INSURANCE

Forest School Camps takes responsibility only for the activities listed in this programme.

Forest School Camps insures for its liabilities at law. While all possible care is taken to avoid accidents, Forest School Camps does not insure for personal accident or for loss or damage to personal property. Those who are not already insured for personal accident and for all risks in respect of personal effects, may wish to make their own arrangements.

Children and staff of camps which travel to foreign countries, including the Republic of Ireland, are covered by a comprehensive travel policy which includes medical treatment as well as loss and damage to personal effects, subject, of course, to the usual limitations and exclusions. The cost of this insurance is included in the camp fee. Details of the insurance scheme can be provided on request. Forest School Camps is not able to insure you if you have not been permanently resident in the United Kingdom for 12 months prior to effecting the insurance. In such cases you must provide us with evidence of suitable cover effected in your country of residence and you will receive a refund equivalent to the insurance premium that would have been paid on your behalf.

CLOTHING WITH THE DISTINCTIVE FSC LOGO T- SHIRTS SWEATSHIRTS

For a price list please
send an SAE to:

Ro Ogle
13 Castle Dore
Swindon
SN5 8PQ

01793 878605

dozyroogle@hotmail.com



STANDING CAMPS KIT LIST

On camp we will be living in the elements. Being warm and dry on a wet day, or not suffering from sunburn after a hot one, can make a big difference to a child's enjoyment of camp. Please make sure your child is prepared for both.

CLOTHING

- rainwear¹
- footwear²
- 3 warm tops (sweatshirts etc)
- 3 pairs of trousers/jeans
- 2 warm woollen jerseys or fleeces
- thick socks, two pairs
- pyjamas/track suit
- swimming costume
- sunhat
- woollen hat and gloves
- handkerchiefs/tissues
- shorts/dress/skirt*



And depending on the length of camp, an appropriate number of...

- light tops³ (T-shirts etc)
- socks
- underclothing

EQUIPMENT

- lightweight tent⁴
- groundsheet⁵ *
- sleeping bag⁶
- rucksac⁷
- Ordnance Survey map (1:25000)*
- compass* (Silva type recommended)

UNDER TENS

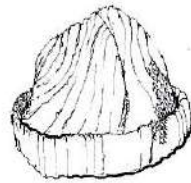
Our experience at camp convinces us that the under tents need extra underwear, socks and two pairs of pyjamas. Waterproofs should be large enough for the tops to fit comfortably over several layers, and the bottoms to fit over wellingtons.

Please ensure that every item is clearly marked to assist its safe return

MISCELLANEOUS

- cloth bag containing:
 - plastic mug
 - deep plate
 - knife, fork and spoon
- sponge bag containing:
 - flannel, soap and nailbrush
 - toothbrush and paste
 - comb/hairbrush
- towels, two medium size
- torch and spare batteries⁸
- penknife⁹
- notebook and pencil
- paper and stamps (for writing home)
- plastic bin liners (for keeping things clean and dry)
- sunblock
- insect repellent*
- musical instrument*
- 'dressing up' clothes*
- materials for making things (e.g. embroidery thread)*

(* optional)
for notes see over



MOBILE CAMPS

Lightweight tents, cooking stoves, fuel containers and billies are needed. A tent should have a flysheet, a sewn-in groundsheet and should ideally weigh less than 1.5 kg per person sharing it. You will normally be expected to supply at least one of the above items. Your camp chief will supply a complete specialised kit list and can advise you what to buy (or-borrow).

When packing for walking mobiles, all your kit (with some space left for food) must fit inside your rucksac. Strong, waterproof walking boots with Vibram soles, or similar, are essential; they must be comfortable and be well walked-in.

For canoeing mobiles, your kit has to be packed into several small waterproof bundles. Kitbags (maximum size 80cm by 30cm diameter) and a small frameless rucksac are best; anything larger will not fit into a canoe.

On cycling mobiles, all your kit must fit inside your panniers and saddle bags (leaving some space for food!)

1 It is **ESSENTIAL** to have thoroughly waterproof rain wear. A PVC or heavy gauge proofed-nylon long anorak, cape or cagoule, with hood is recommended. Waterproof trousers are also useful and should be large enough to put on over boots. Very lightweight proofed-nylon is only showerproof and both this and plastic macs have a very limited life under camp conditions. Waterproofs should be tested under a shower or garden hose – if they leak your child will get wet every time it rains!

2 Even at standing camps we do a lot of rough walking, so footwear must be comfortable. Children under eleven must have strong walking or at least training shoes. The heavier tread of walking boots gives better grip on wet grass. All campers will also need a pair of lightweight shoes for wearing around the camp. As it is often wet underfoot we recommend Wellington boots for all campers on standing camps, and consider them **ESSENTIAL** for the under-tents. Wellingtons should be large enough to accommodate thick socks. All footwear must be well walked-in before camp.

3 At least one light top should be long sleeved with a collar to protect against sunburn.

4 FSC holds a limited supply of small tents which we are prepared to lend to campers at standing camps. Those who wish to go on camping should aim to get a tent of their own. Less expensive traditional A-frame tents offer better protection than similarly priced dome tents.

5 A separate groundsheet is useful for sleeping out and sitting on.

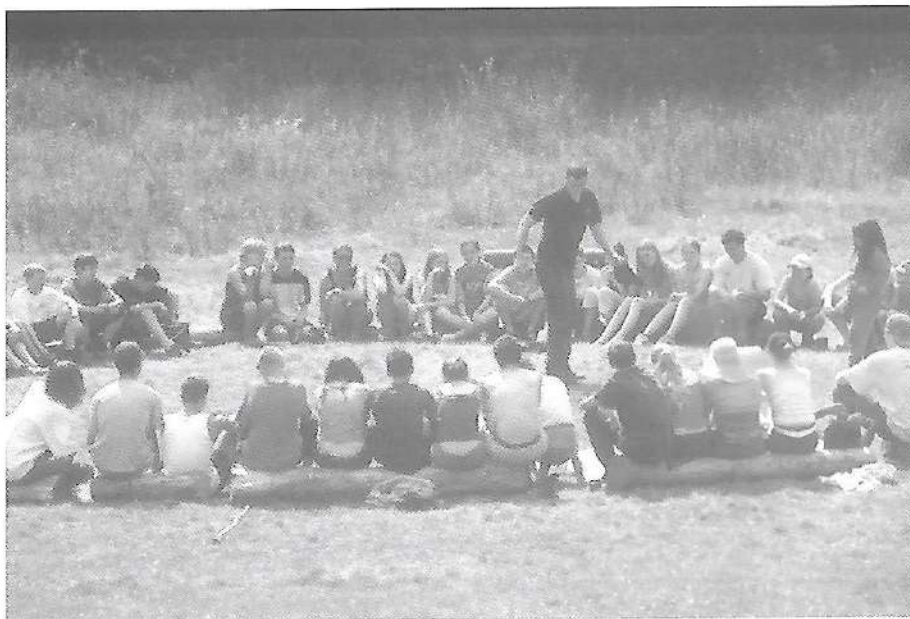
6 The best bedding for camp is a sleeping bag which can be either natural (down and feather) or synthetic fibre filled. The latter is cheaper, can be washed, is heavier and bulkier but is adequate for our camps. All bags should be used with sheet linings. A blanket can provide extra warmth. Good insulation between sleeping bag and groundsheet can be provided by a Karrimat, as there is no room in small tents for camp beds or lilos. We recommend that two sleeping bags be used at Easter and autumn camps. All bedding should be packed into a thick polythene bag.

7 A rucksac does not have to be large enough to hold everything but must be able to hold a sleeping bag, jumper, waterproofs and some food on hike. It must be comfortable and get the load as high and as close to the back as possible. Young children rapidly outgrow a small rucksac and a cheap un-framed pack is a better start than a poorly fitting framed rucksac. For extra kit, a canvas or nylon kitbag or zipped holdall is good; a suitcase is not suitable. Line all luggage with thick polythene sacks.

8 Good lightweight torches are widely available. Torches will need to be carried on hike so don't bring a massive searchlight, and remember the spare batteries.

9 A sheath knife or a single bladed penknife is useful; most other gadgets on a penknife will increase the price more than the usefulness. A lanyard, a chain or a length of string is strongly recommended for attaching the knife to a belt as a safeguard against loss.

NEW STAFF



If you are over eighteen and you think FSC sounds like your sort of organisation, do give us a try. We can't offer much by way of money – just expenses – but the good company of like-minded adults of all ages keeps many people coming back time and again.

Some of our best staff are recruited by children returning from camp and urging their parents to join in the fun. We provide training in practical camping skills and also make sure that each camp has a balance of new and experienced staff so that each person can continue 'learning by doing'.

If you enjoy the open air, the company of children and being part of a community, come along to a weekend training camp, find out

what's involved and see whether you enjoy it. Parents often have much needed experience in child care, younger staff have more energy for boisterous games and activities.

Whether you're zany and imaginative or dull and dependable, we need your talents! Training camps last for two to three days.

Information is sent out in reply to queries in the Spring.

Write to:

Leslie Holden
21 Dukes Avenue
London N10 2PS
staffing@fsc.org.uk

USEFUL ADDRESSES

All our workers are voluntary and help Forest School Camps in their spare time. While every effort is made to deal with enrolments and correspondence promptly, some delays are unavoidable. Please write to our officers rather than telephone them.

ENROLMENT SECRETARIES

SUMMER

Ruth Steed, 14 Highfields, Forest Row,
East Sussex RH18 5AJ

EASTER

Rod and Julie Gritten, Traian
Llanfrothen, Penrhyndeudraeth,
Gwynedd LL48 6SW

WHITSUN

Mary Brown, 32 Castellain Road,
London W9 1EZ

OTHER CAMPS

Juliette Flower, 10 Bewick Mews
London SE15 1QR

For Special Enrolments,
Learning Difficulties Enrolments &
Physical Disabilities Enrolments
please see page 7. For work camps see
page 29.

PROGRAMME REQUESTS & NEW MEMBER ENQUIRIES

Brenda Hatcher
8 Broadview, Fryent Way,
London, NW9 9SG

GENERAL ENQUIRIES

(but please no programme requests)
should be addressed to the General
Secretary

AID FUND

For the Aid Fund Secretary address
please see page 9

CHAIR
Will Coppola
16 Huddleston Road
London N7 0AP
chair@fsc.org.uk

GENERAL SECRETARY
Rhiannon Gale
39 Mattison Road
London N4 1BG
gensec@fsc.org.uk

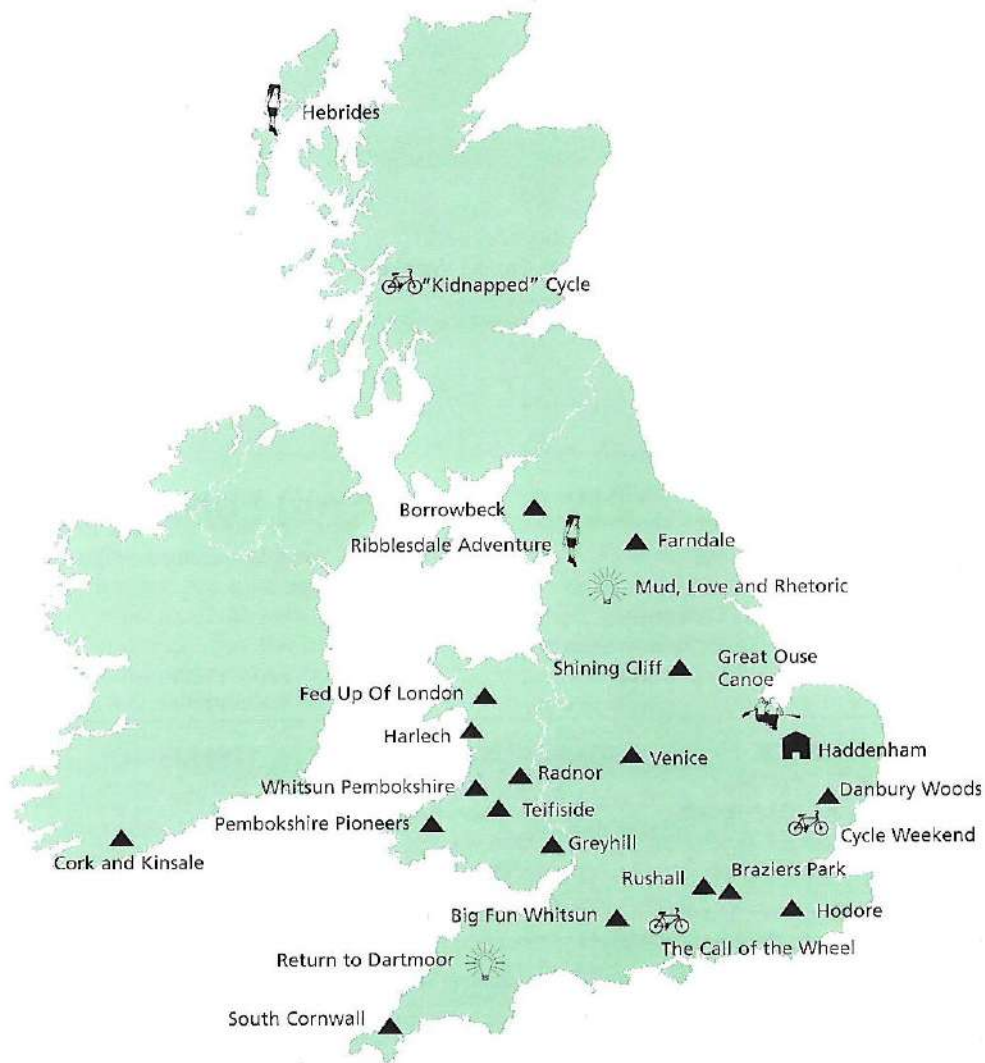
TREASURER
Daniel Simon
54 Elderfield Road
London E5 0LF
treasurer@fsc.org.uk

Forest School Camps is a company limited by guarantee and registered as a charity; Company Number 937722, Charity Number 306006. Registered address: Druid's Altar, Llangenny, nr. Crickhowell, Powys, NP8 1HD. Forest School Camps is exempt from VAT

Data Protection Statement: Information on FSC's database is held under the provision of the Data Protection Act. It is held exclusively for promoting the proper functioning of the charity, Forest School Camps.

www.fsc.org.uk

WHERE WE CAMP...



...AND WHEN IN 2003

DATE	NO.	NAME	AGES	
7 Feb - 9 Feb	50	Greyhill Family Work Camp	188+	**
22 Feb - 27 Feb	1	Return to Dartmoor.	8.0 - 17.11	*
28 Mar - 30 Mar	51	Danbury Wooding	18+	**
4 Apr - 6 Apr	52	Rushall Manor Work Weekend	16 +	**
12 Apr - 17 Apr	53	Grey Hill Family Work Camp	18 +	**
17 Apr - 24 Apr	2	Easter in Dorset	8.0 - 17.11	
18 Apr - 21 Apr	54	On Your 'Eads 1	16 +	**
18 Apr - 25 Apr	3	Five Go Shakin'	8.0 - 17.11	
2 May - 4 May	55	Brazier's Park Work Weekend	16+	**
2 May - 5 May	40	Shining Cliff Associate Camp	Family	
2 May - 5 May	41	Ribblesdale Associate Camp	Family	
2 May - 5 May	4	Gurn Baby Gurn...	6.6 -17.11	
3 May - 5 May	5	Venice	8.0 - 17.11	
9 May - 11 May	6	Lazy Cycling Weekend	12.0 - 17.11	*
16 May - 18 May	7	Great Ouse Canoe Weekend	10.0 - 17.11	*
24 May - 31 May	8	Big Fun Whitsun...	6.6 - 14.11	
24 May - 31 May	9	Whitsun in Pembrokeshire	6.6 - 17.11	
24 May - 31 May	10	Fed up of London	8.0 - 14.11	
24 May - 31 May	11	The Call of the Wheel	12.0 - 17.11	*
24 May - 31 May	12	Ribblesdale Adventure	10.0 - 17.11	*
6 Jun - 8 Jun	56	Farndale Path-grafting	16+	**
6 Jun - 8 Jun	42	Danbury Woods Associate Camp	Family	
27 Jun - 29 Jun	36	Danbury Skills Camp	16+	**
4 Jul - 6 Jul	43	Rushall Associate Camp	Family	
4 Jul - 6 Jul	44	Cumbria Associate Camp	Family	
4 Jul - 6 Jul	13	Weekend at Hodore	6.6 - 17.11	
6 Jul - 18 Jul	57	Greyhill International....	18 +	**
22 Jul - 5 Aug	23	Cork And Kinsale 1	6.6 - 17.11	
22 Jul -6 Aug	27	Hebrides	8.0 - 17.11	*
23 Jul - 1 Aug	20	The Red Herring (@ Hodore)	6.6 - 17.11	
23 Jul - 5 Aug	21	Radnor 1	6.6 - 17.11	
23 Jul - 5 Aug	22	Farndale I	6.6 - 17.11	
23 Jul - 5 Aug	24	South Cornwall 1	6.6 - 17.11	
23 Jul - 5 Aug	25	Harlech 1	8.0 - 17.11	
23 Jul - 5 Aug	26	Borrowbeck 1	8.0 - 17.11	
23 Jul - 5 Aug	28	Pembrokeshire Pioneers	8.0 - 11.11 - 15.0 -17.11*	
23 Jul - 5 Aug	29	"Kidnapped" Cycle Mobile	13.0 - 17.11	*
6 Aug - 20 Aug	33	Cork and Kinsale 2	8.0 - 17.11	
6 Aug - 20 Aug	35	Mud, Love and Rhetoric	11.0 - 17.11	*
7 Aug - 20 Aug	31	Radnor 2	6.6 - 17.11	
7 Aug - 20 Aug	32	Farndale 2	8.0 - 17.11	
7 Aug - 20 Aug	34	South Cornwall 2	6.6 - 17.11	
23 Aug - 29.Aug	37	Mountain Skills Camp	15.0 - 17.11	*
22 Aug - 25 Aug	58	On Your 'Eads 2	16+	**
26 Sep - 28 Sep	59	Brazier's Park Work Weekend	16+	**
24 Oct - 26 Oct	60	Rushall Manor Work Weekend	16+	**

** - work camps

* - for experienced campers

