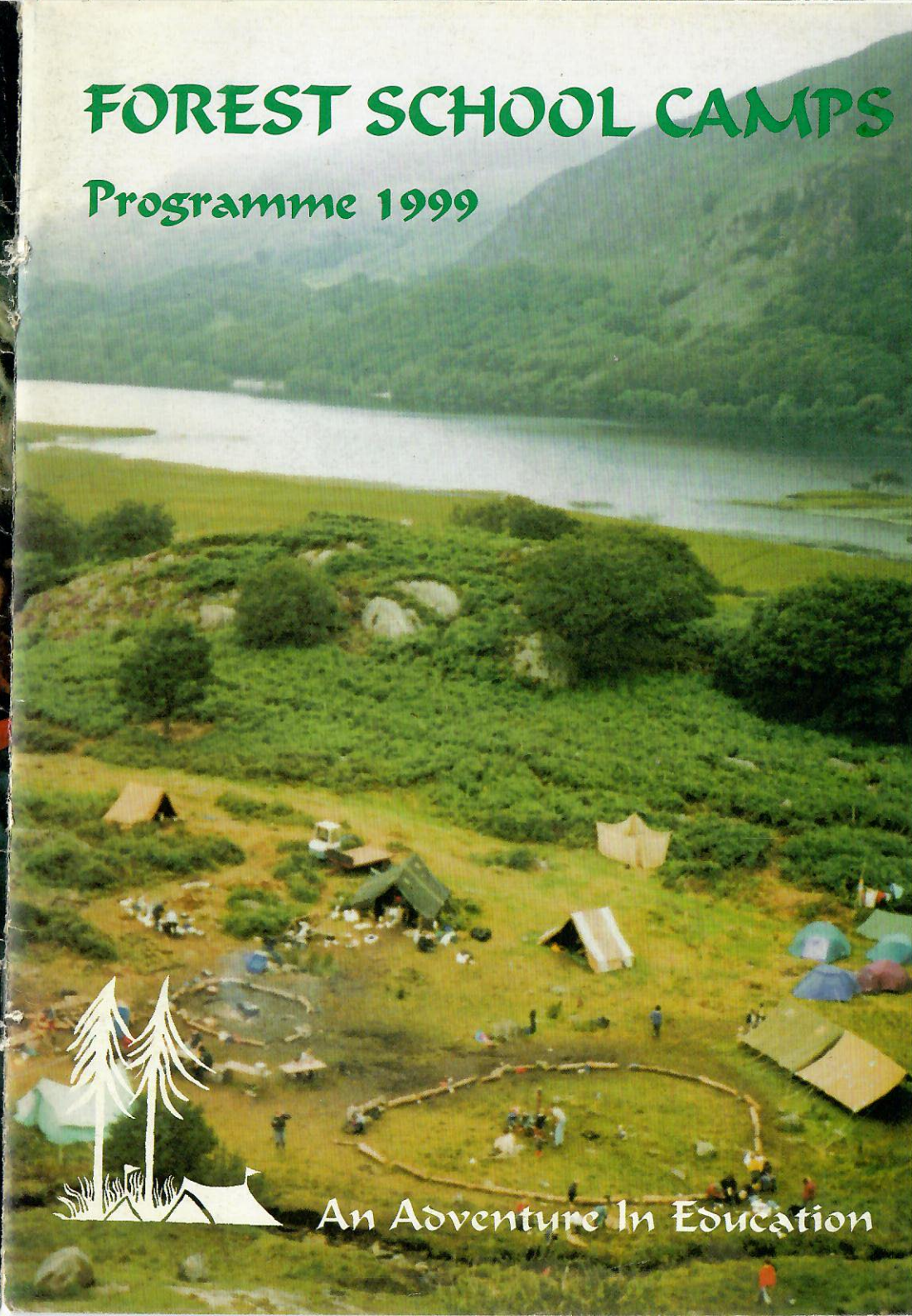




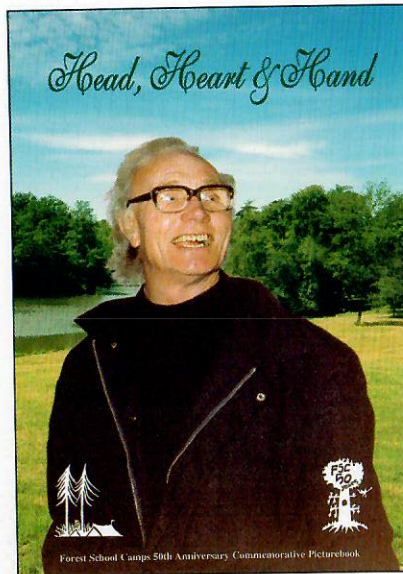
# FOREST SCHOOL CAMPS

Programme 1999



An Adventure In Education

## ...AND WHEN IN 1999



Beefy, Ron Brand, the President of FSC died in October 1998. Many of us knew him, remember him with joy and love, and think with gratitude of what he did for the organisation over many years. Beefy was a powerful, charismatic leader. He led 30 standing camps. He was an orator, a singer, a glee leader of song and dance. He made a particular effort to get to know the children, especially those who felt lonely or homesick. He was a busy administrator, who built up FSC and maintained it until he retired in 1986. He left a structure that would work and regenerate. He encouraged the expansion of FSC into other areas, into New Horizons, into Flysheet, with Holiday Projects West. His favourite Lodge songs were: 'Glad That I Live Am I' and 'Jerusalem'. He lived the life he loved, and we loved him.

Leslie Holden

	Dates	No.	Name	Ages
Early Summer	13 Feb - 18 Feb	1	Over and Under Dartmoor	8 to 17.11 *
	2 April - 9 April	2	Makin' and Shakin'	8 to 17.11
	3 April - 10 April	3	Easter in Dorset	8 to 17.11
	3 April - 10 April	40	Greyhill Family Work Camp	Family and 16+ *
	30 April - 3 May	4	The Gurn Goes On	6.6 to 17.11
	30 April - 3 May	41	Shining Cliff Associate Camp	Family
	1 May - 3 May	5	Venice	8 to 17.11
	1 May - 3 May	42	Magdalen Farm Associate Camp	Family
	14 May - 16 May	6	Lazy Cycling Weekend	12 to 17.11 *
	29 May - 5 June	7	Shining Cliff	6.6 to 14.11
Whitsun	29 May - 5 June	8	Magic in the Mountains	6.6 to 17.11
	29 May - 5 June	9	Whitsun in Wales	6.6 to 14.11
	29 May - 31 May	10	Venice at Whitsun	8 to 17.11
	29 May - 5 June	11	North Yorkshire Adventure	10 to 17.11 *
	1 June - 4 June	12	Bull Pot of the Witches	8 to 17.11 *
	18 June - 20 June	43	Mendip Associate Camp	Family
	25 June - 27 June	13	Canoe Training Weekend	10 to 17.11 *
	25 June - 27 June	14	Small Wheels...	10 to 14.11 *
	2 July - 4 July	44	Rushall Associate Camp	Family
	3 July - 18 July	49	Greyhill Work Camp	18+ *
Summer	9 July - 11 July	15	Weekend at Hodore	6.6 to 17.11 & PF Help
	24 July - 1 August	45	New Forest Associate Camp	Family
	28 July - 10 August	16	Radnor One	6.6 to 17.11
	28 July - 10 August	17	Teifside One	8 to 17.11
	28 July - 10 August	18	Harlech One	6.6 to 17.11
	28 July - 10 August	19	Farndale One	6.6 to 17.11
	28 July - 10 August	20	Borrowbeck One	6.6 to 17.11
	28 July - 10 August	21	North Pembroke One	6.6 to 17.11
	28 July - 6 August	22	Hunkydory at Hodore	6.6 to 17.11 & PF Help
	28 July - 10 August	23	The Nungwi Mobile	13 to 17.11 *
Later	28 July - 10 August	24	To the Reeks, to the Reeks	13 to 17.11 *
	6 August - 8 August	46	Rushall Associate Camp	Family
	12 August - 25 August	25	Radnor Two	6.6 to 17.11
	12 August - 25 August	26	Teifside Two	8 to 17.11
	12 August - 25 August	27	Waterworld Two	6.6 to 17.11
	12 August - 25 August	28	Borrowbeck Two	6.6 to 17.11
	12 August - 25 August	29	Blue Skies Too	6.6 to 17.11
	12 August - 25 August	30	Dingle Diggers Semi-mobile	9 to 15.11 *
	14 August - 21 August	50	Greyhill Work Camp	16+ *
	26 August - 30 August	47	North Yorkshire Associate Camp	Family
	23 October - 27 October	31	Mendip Pothole	8 to 17.11 *
	To be announced	48&51	Rushall Manor Work Weekends	16+ *

\* - work camp

\* - for experienced campers

# WHERE WE CAMP...



# CONTENTS

FOREST SCHOOL CAMPS	2
AID FUND	3
HOW TO ENROL	4
CAMP LIFE	7
EASTER AND EARLIER	8
SPRING WEEKEND CAMPS	11
WHITSUN CAMPS	12
EARLY SUMMER CAMPS	14
MAIN SUMMER CAMPS	16
AUTUMN AND LATER...	23
HADDENHAM	24
ASSOCIATE MEMBERSHIP OF FSC	25
WORK CAMPS	28
FSC REGIONAL GROUPS	30
PREPARING FOR CAMP	31
KIT LIST	32
NEW STAFF	34
USEFUL ADDRESSES	35
WHERE WE CAMP (MAP)	36
CAMPS LISTING 1999	37

# FOREST SCHOOL CAMPS

**FSC is not a commercial holiday company, it is an educational charity, a voluntary organisation. All our officers and staff are unpaid volunteers.**

Forest School, which ran in the 1930s, drew its philosophy from progressive educators, from the Woodcraft movements and the Native Americans, from Quakers and others. Special importance was attached to the experience of boys and girls, children and adults, learning to work and play together close to nature.

FSC began in 1948 when former pupils and staff came together, anxious to develop and pass on the ways and values of Forest School which by then had closed.

Our education is about discovering for oneself how to do something, rather than being told in the abstract. Children and staff find themselves in situations that encourage this, the outdoors demands and encourages learning.

We remove unnecessary authority and, with due regard for safety and legality, encourage children to take responsibility and to reach their own decisions on small and not-so-small issues, individually or as members of a group.

At camp we aim to teach ourselves how to live with independence and responsibility; concern and care for ourselves, other people and the environment; resourcefulness and self-confidence; tolerance and respect. FSC is determined that all people be treated equally regardless of age, gender, sexual orientation, ethnic origin, religion and disability. These are high ideals - we don't always succeed.

A Native American belief is that you will only be in touch with nature if you 'sit and sleep on the earth'. Their feeling for the wholeness of life on our planet is expressed in some of our rituals and the names we give things at camp.

The philosophy developed at camp is practised throughout the administrative organisation of FSC. When you enrol your children you become a part of FSC and this approach. Many staff members begin their association with FSC as parents or campers.

Camp is great fun, though at a practical level it can also be cold and wet, and is often dirty. Despite this, many people camp again and again and again. Join us to find out why!

# USEFUL ADDRESSES

All our workers are voluntary and help Forest School Camps in their spare time. While every effort is made to deal with enrolments and correspondence promptly, some delays are unavoidable. Please write to our officers rather than telephone them.

## ENROLMENT SECRETARIES

### SUMMER

Ruth Steed, 14 Highfields, Forest Row, East Sussex RH18 5AJ

### EASTER

Rod and Julie Gritten, Traian Llanfrothen, Penrhyndeudraeth, Gwynedd LL48 6SW

### WHITSUN

Mary Brown, 32 Castellain Road, London W9 1EZ

### OTHER CAMPS

Brenda Hatcher, 8 Broadview, Fryent Way, London NW9 9SG

### SPECIAL ENROLMENTS

### LEARNING DIFFICULTIES ENROLMENTS

### PHYSICAL DISABILITIES ENROLMENT

### AID FUND SECRETARY

See pages 3 & 6 for these addresses

## PROGRAMME REQUESTS & NEW MEMBER ENQUIRIES

Filton House, 42 Payne Avenue, Aldrington, Hove, East Sussex BN3 5HD

## GENERAL ENQUIRIES

(but please no programme requests) should be addressed to the General Secretary

---

### CHAIRMAN

Leslie Holden  
21 Dukes Avenue  
London N10 2PS

### GENERAL SECRETARY

Lottie Davies  
31 Castle Street  
Farnham  
Surrey GU9 7JB

### TREASURER

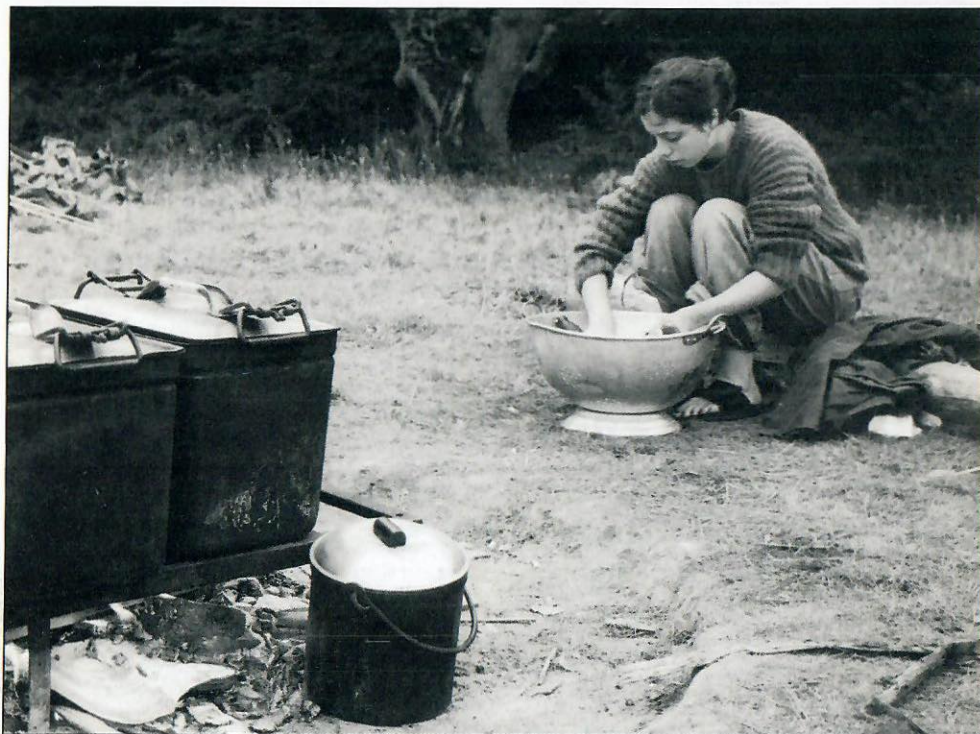
Hilary Chivall  
37 Church Street  
Whittlesey  
Peterborough  
Cambs PE7 1DB

---

### This programme is produced by the Camps Committee

Forest School Camps is a company limited by guarantee and registered as a charity; Company Number 937722, Charity Number 306006. Registered address: Druid's Altar, Llangenny, nr. Crickhowell, Powys, NP8 1HD. Forest School Camps is exempt from VAT.

## NEW STAFF



If you are over eighteen and you think FSC sounds like your sort of organisation, do give us a try. We can't offer much by way of money - just expenses - but the good company of like-minded adults of all ages keeps many people coming back time and again.

Some of our best staff are recruited by children returning from camp and urging their parents to join in the fun. We provide training in practical camping skills and also make sure that each camp has a balance of new and experienced staff so that each person can continue 'learning by doing'.

If you enjoy the open air, the company of children and being part of a community, come along to a weekend training camp, find out what's involved and see whether you enjoy it. Parents often have much needed experience in child care, younger staff have more energy for boisterous games and activities. Whether you're zany and imaginative or dull and dependable, we need your talents! Training camps last for two to three days.

New staff enquiries to:

- **Ellie Tallis, 23A Stanhope Gardens, London N6 5TT**

## AID FUND



Every year FSC subsidises places on camp for children of parents who cannot afford the full fees (students, parents on income support, or those with a low income or whose circumstances change). We do sometimes have to turn down children but this is due to a lack of places, not the financial circumstances of parents. We also provide extra equipment on camp where necessary.

If you would like to discuss this further please write to:

- **Ruth Steed, 14 Highfields, Forest Row, East Sussex RH18 SAT**


or


- **Donal Rush, 12 Appleshaw House, Champion Hill, London SE5 8DW**

Alternatively, if you would like to help other children enjoy the experience of FSC, please send donations - cheques payable to 'FSC (Aid Fund)' to the treasurer (address on page 35). If you would like to covenant money to the Aid Fund, and thus take advantage of the tax concessions on gifts to Charities, please write to the treasurer for a covenant form.

## HOW TO ENROL



 Early application is strongly recommended. While we do deal with applications as they arrive, we also place children to ensure that camps are balanced by age, sex, and experience. Therefore children are not allocated places in strict order of receipt of applications, and some early applicants may be disappointed.

 All children who camp with us are youth members of FSC until they reach the age of 18, when we hope to welcome them as staff.

 Members are placed first. New applicants may be placed on a waiting list. We will not normally accept applications for summer camps after May 31st.

- Please apply for summer camps on yellow enrolment forms and for all other camps on blue enrolment forms.
- Please send a separate form for each child and camp; if necessary photocopy extra forms.
- Please send completed forms to the appropriate enrolment secretary. A full list of addresses appears on page 35.
- Please send a separate deposit for each child and camp:

For camps of 7 days and longer, send £30. This is not returnable once you are offered a place on a camp of your choice.

For camps of 6 days or less, send the full fee. Of this, £10 is treated as a non-returnable deposit, once you are offered a place on a camp of your choice.

## MOBILE CAMPS

Lightweight tents, cooking stoves, fuel containers and billies are needed. A tent should have a flysheet, a sewn-in groundsheet and should ideally weigh less than 1.5 kg per person sharing it. You will normally be expected to supply at least one of the above items. Your camp chief will supply a complete specialised kit list and can advise you what to buy (or borrow).

When packing for walking mobiles, all your kit (with some space left for food) must fit inside your rucksac. Strong, waterproof walking boots with Vibram soles, or similar, are essential; they must be comfortable and be well walked-in.

For canoeing mobiles, your kit has to be packed into several small waterproof bundles. Kitbags (maximum size 80cm by 30cm diameter) and a small frameless rucksac are best; anything larger will not fit into a canoe.

On cycling mobiles, all your kit must fit inside your panniers and saddle bags (leaving some space for food!)

**1** It is **ESSENTIAL** to have thoroughly waterproof rain wear. A PVC or heavy gauge proofed-nylon long anorak, cape or cagoule, with hood is recommended. Waterproof trousers are also useful and should be large enough to put on over boots. Very lightweight proofed-nylon is only showerproof and both this and plastic macs have a very limited life under camp conditions. Waterproofs should be tested under a shower or garden hose - if they leak your child will get wet every time it rains!

**2** Even at standing camps we do a lot of rough walking, so footwear must be comfortable. Children under eleven must have strong walking or at least training shoes. The heavier tread of walking boots gives better grip on wet grass. All campers will also need a pair of lightweight shoes for wearing around the camp. As it is often wet underfoot we recommend Wellington boots for all campers on standing camps, and consider them **ESSENTIAL** for the under-tens. Wellingtons should be large enough to accommodate thick socks. All footwear must be well walked-in before camp.

**3** At least one light top should be long sleeved with a collar to protect against sunburn.

**4** FSC holds a limited supply of small tents which we are prepared to lend to campers at standing camps. Those who wish to go on camping should aim to get a tent of their own. Less expensive traditional A-frame tents offer better protection than similarly priced dome tents.

**5** A separate groundsheet is useful for sleeping out and sitting on.

**6** The best bedding for camp is a sleeping bag which can be either natural (down and feather) or synthetic fibre filled. The latter is cheaper, can be washed, is heavier and bulkier but is adequate for our camps. All bags should be used with sheet linings. A blanket can provide extra warmth. Good insulation between sleeping bag and groundsheet can be provided by a Karrimat, as there is no room in small tents for camp beds or lilos. We recommend that two sleeping bags be used at Easter and autumn camps. All bedding should be packed into a thick polythene bag.

**7** A rucksac does not have to be large enough to hold everything but must be able to hold a sleeping bag, jumper, waterproofs and some food on hike. It must be comfortable and get the load as high and as close to the back as possible. Young children rapidly outgrow a small rucksac and a cheap in-framed pack is a better start than a poorly fitting framed rucksac. For extra kit, a canvas or nylon kitbag or zipped holdall is good; a suitcase is not suitable. Line all luggage with thick polythene sacks.

**8** Good lightweight torches are widely available. Torches will need to be carried on hike so don't bring a massive searchlight, and remember the spare batteries.

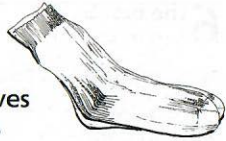
**9** A sheath knife or a single bladed penknife is useful; most other gadgets on a penknife will increase the price more than the usefulness. A lanyard, a chain or a length of string is strongly recommended for attaching the knife to a belt as a safeguard against loss.

# STANDING CAMPS KIT LIST

On camp we will be living in the elements. Being warm and dry on a wet day, or not suffering from sunburn after a hot one, can make a big difference to a child's enjoyment of camp. Please make sure your child is prepared for both.

## CLOTHING

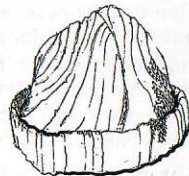
- rainwear<sup>1</sup>
- footwear<sup>2</sup>
- 3 warm tops (sweatshirts etc)
- 3 pairs of trousers/jeans
- 2 warm woollen jerseys
- thick socks, two pairs
- pyjamas/track suit
- swimming costume
- sunhat
- woollen hat and gloves
- handkerchiefs/tissues
- shorts/dress/skirt\*



## MISCELLANEOUS

- cloth bag containing:
  - plastic mug
  - deep plate
  - knife, fork and spoon
- sponge bag containing:
  - flannel, soap and nailbrush
  - toothbrush and paste
  - comb/hairbrush
- towels, two medium size
- torch and spare batteries<sup>8</sup>
- penknife<sup>9</sup>
- notebook and pencil
- paper and stamps (for writing home)
- plastic bin liners (for keeping things clean and dry)
- sunblock
- insect repellent\*
- musical instrument\*
- 'dressing up' clothes\*
- materials for making things (e.g. embroidery thread)\*

(\* optional)



And depending on the length of camp, an appropriate number of...

- light tops<sup>3</sup> (T-shirts etc)
- socks
- underclothing

## EQUIPMENT

- lightweight tent<sup>4</sup>
- groundsheet<sup>5</sup> \*
- sleeping bag<sup>6</sup>
- rucsac<sup>7</sup>
- Ordnance Survey map (1:50000)\*
- compass\* (Silva type recommended)

## UNDER TENS

Our experience at camp convinces us that the under tens need extra underwear, socks and two pairs of pyjamas. Waterproofs should be large enough for the tops to fit comfortably over several layers, and the bottoms to fit over wellingtons.

**Please ensure that every item is clearly marked to assist its safe return.**

- Please write the camper's name on the back of your cheque/P.O./money order and make it payable to 'Forest School Camps'.
- We require two stamped addressed (DL size - 21x11 cm - or bigger) envelopes per application form. One is used to give confirmation of our receipt of your enrolment fee and the second to offer a place at camp.
- For the main summer camps only, the remainder of the fee may be paid in three instalments; please indicate on your enrolment form if you wish to use this method of payment.
- Family discount - for families where three or more children attend summer camps there is a reduction in fees of £15 per child.
- All fees for summer camps must be paid in full by May 31st. Fees for Whitsun camps must be paid in full six weeks before the camp.
- Fees printed in the programme include return fares from London. Those travelling separately will receive a rebate.



If a child misses the escorted party it is the parent or guardian's responsibility to arrange his or her transport to the site.



Because we try to provide a continuous experience for children, priority for membership is given to siblings of existing members.



New campers are not normally accepted after their fifteenth birthday as there is great demand for older child places, and these are given in preference to existing members. In addition, we may not be able to place all new thirteen and fourteen year-olds due to demand for places.



Children are not normally enrolled on activity camps until they have attended two standing camps. This applies even if your child has camped with other organisations. The standing camps impart the basic FSC philosophy essential for activity camps.



Do not ask for more than two children (other than siblings) to camp together as this restricts our ability to offer them a place on their choice of camps. In addition, this may reduce the chance of children being placed at all.



At camp, children join their own age group: Elves 6.6 to 7.11, Woodlings 8.0 to 10.11, Trailseekers 11.0 to 12.11, Trackers 13.0 to 14.11, and Pathfinders, 15.0 to 17.11 (ages on 1st September). Each group camps separately from the others. Therefore unless siblings or friends happen to be in the same group, it will not be possible for them to share a tent.

## PARENTS' MEETINGS

There will be two Saturday meetings in central London for parents and sponsors whose children are enrolled on this year's camps. The first will be on 24th April for those attending spring, Whitsun or early summer camps, and the second on 3rd July for those going to summer camps. These are opportunities for you to meet some of the staff of the camps and to find out more about FSC. Full details of the meeting will be sent to you by your camp organiser. If you do not have a child enrolled but would like to attend the July meeting, details may be obtained from the Secretary after 1 June.

## CHILDREN WITH SPECIAL NEEDS

FSC runs some camps suitable for active children with special needs due to severe learning difficulties or physical disabilities (Camps 4, 15 and 22). We also integrate these children into other camps wherever possible. We can advise parents or sponsors which camp would be the most suitable for a particular child. We realise that children with disabilities may need one member of staff each at camp. If parents or sponsors feel that their child with disabilities would enjoy camping, we ask them not to let the cost deter them from applying, as FSC may be able to arrange financial assistance. Camp 22 is substantially subsidised by FSC and run specifically for members with severe learning difficulties.

Parents or sponsors of children with severe learning difficulties should apply directly to:

- **Vic Daggart, 69 Charles Rowan House, Margery Street, London WC1X 0EJ**

Parents or sponsors of children with physical disabilities should apply directly to:

- **Trevor Rawcliffe, 17A Ariel Road, London NW6 2EA**

## SPECIAL ENROLMENTS

Social workers, teachers, care workers, foster parents, and others wishing to enrol children who would benefit from our camps, should contact:

- **Joan Wilmot, 19B McGregor Road, London W11 1DE**

## CANCELLATION

If you have to cancel a place at a camp, please write to the camp organiser, giving the reason, as soon as possible. **The enrolment fee is not returnable.** If a place is cancelled within eight weeks of the start of camp it will not be possible to enrol another child and so it is unlikely that we will be able to make a refund. FSC does not insure you against cancellation. Holiday insurance (available from most travel agents and banks) would cover you against this risk. Such insurance could also cover loss or damage to a member's equipment, for which FSC cannot accept responsibility. **Please note that the final decision on refunds rests with the Children's Secretary.**

# PREPARING FOR CAMP

## EQUIPMENT

You probably already own most of the things you need for a standing camp. Warm, well-worn clothing is required. The only essential extras are a sleeping bag and really effective waterproofs; we don't always take shelter when it rains. We ask that families who continue to camp with us try to supply at least one two-person tent. Full details of what to bring to standing camps are given in the kit list on page 32. For mobile camps some more specialist equipment may be required; a few notes appear on page 33, but full details will be sent to you by your camp organiser.

## TETANUS

We ask that all campers are fully protected against tetanus well before camp. The pre-school tetanus course lasts for ten years and the school-leaving booster lasts until 25.

## LIFE JACKETS

We make it a firm policy that life jackets or buoyancy aids are worn when children are canoeing, sailing or rafting with FSC. We will provide them. Our policy is not to wear buoyancy aids when narrow-boating.

## TRAVEL

Escorted parties travel between London and our camps. The expected departure and destination stations are listed under each camp. Final details of times and meeting places will be sent in a pre-camp circular a few weeks before camp. Campers may arrange to join the escorted party at any station at which the train stops, but those doing so will be asked to purchase their own tickets to and from the destination. A travel refund will be made.

## INSURANCE

Forest School Camps takes responsibility only for the activities listed in this programme. Forest School Camps insures for its liabilities at law. While all possible care is taken to avoid accidents, Forest School Camps does not insure for personal accident or for loss or damage to personal property. Those who are not already insured for personal accident and for all risks in respect of personal effects, may wish to make their own arrangements.

Children and staff of camps which travel to foreign countries, including the Republic of Ireland, are covered by a comprehensive travel policy which includes medical treatment as well as loss and damage to personal effects, subject, of course, to the usual limitations and exclusions. The cost of this insurance is included in the camp fee. Details of the insurance scheme can be provided on request. Forest School Camps is not able to insure you if you have not been permanently resident in the United Kingdom for 12 months prior to effecting the insurance. In such cases you must provide us with evidence of suitable cover effected in your country of residence and you will receive a refund equivalent to the insurance premium that would have been paid on your behalf.



## FSC REGIONAL GROUPS

Over the years, FSC staff have set up informal regionally based groups which meet and run weekend camps occasionally. If you wish to join in the activities of one of these groups please contact the relevant person. SAEs are appreciated.

### EASTERN REGION

For the more discerning, learning, caring and sharing clanmembers, night navigators and spelunkers - we will be running camps on the Weekends of January 22nd - 24th and February 12th - 14th. If you are interested please contact:

- **Colin Muttly, c/o 10 North Parade, Southwold, Suffolk IP18 6LP**

### PEAK REGION

We hope to run at least one weekend camp in the Derbyshire Peak District. For further details, please write to:

- **Peter O'Donoghue, 23 Mottershead Road, Woodhouse Park, Manchester M22 9QG**

### WESTERN REGION

We plan to run occasional camps in the Gloucester, Somerset and Monmouthshire area and are looking for campers and staff alike, to take an active role. If you are interested please contact:

- **Andy Freedman, 39 Slad Road, Stroud, Gloucs. GL5 1QR**

## Clothing with the distinctive

FSC logo

T-SHIRTS

SWEATSHIRTS



For a price list please send an SAE to:

**Caroline Hurt  
3 Cecil Road  
Dronfield  
N E Derbyshire  
S18 2GW  
Tel: 01246 419957**

## CAMP LIFE

Most of our summer, Whitsun and Easter camps are standing camps. This means that they are based at one site. Small camps may have between 25 and 35 children on them, and large camps between 60 and 70. At standing camps we impart the basic camping skills. The children learn to pitch a tent, to look after their possessions and to keep them dry. They learn to gather and cut wood, to make fires and to cook food. Groups of campers from across the age range - clans - take turns in the kitchen to prepare the food for the camp.

All this knowledge is consolidated by the two to four-day hike which takes place during the camp. Each age group goes with its staff for a distance suitable for the age and strength of its members. During the hike the children usually plan, buy (with camp funds) and cook their own meals, with help when needed.

Other activities during the camp may include swimming, exploring, night walks, country dancing, campfires, and various FSC games. The end of camp is marked by two major events: Merrymoot and Lodge Common Council. At Merrymoot, the whole camp gathers round a roaring fire to entertain each other with a mixture of songs, sketches and improvisations. At Lodge Common Council, the campers gather around a more formal fire and review the camp, suggesting changes in activities or emphasis for the following year.

After a few standing camps, many children are ready to try an activity camp. Most of these camps are semi-mobile or mobile, travelling on foot, by bicycle, or by canoe. The campers buy their food (with camp funds) every few days and cook in small groups.

Activity camps are generally smaller than standing camps, usually with 15 to 25 children. Some mobiles are strenuous, others are easier. The descriptions of the camps give more information. Many activity camps are for experienced FSC members only, i.e. those who have attended 2 standing camps, and are marked with a \* on page 37.

## NEW CAMPERS

Going to camp for the first time can seem scary. Camp life is very different from the lifestyle most of us are used to, but children fit in very quickly and enjoy the experience of living in an FSC community. Both staff and children are learning all the time, and every camp has its own good and bad times for everyone.

Each year there are some children who are camping for the first time. Staff make every effort to ensure that new children feel at home and secure. Camp is a caring community where everyone tries to be alert to each individual's hopes and fears.

The camp starts on the escort journey, and it is a good idea for children to travel with the escorted party if at all possible. This is where people first start to get to know each other.

Further information and advice will come by post with the 'pre-camp circular' a few weeks before camp starts.

# EASTER AND EARLIER

There are often more places available on Easter camps than on Whitsun camps. The weather at Easter is sometimes challenging but the result is often a particularly close and enjoyable camp.

## OVER AND UNDER DARTMOOR Camp 1

**Camp Leaders:** Hilary Chivall and Alex Stone  
**Organiser:** Mick Coase

Warm clothes and warm people will keep us warm, so bring songs, stories and yourself for two nights in our tents beneath the stars and two days revelling in the underground world of mud and magic.

For the first half of camp we are hoping to explore the North moor, where we can expect every kind of weather to help us build a strong community. After this we return to the caving hut in Buckfastleigh, where we will have left our caving gear, and from here we can experience the delights of the Devonshire caves. Join us for a dance in the Crystal Corridor and a slither down the Mud Slide, maybe we'll find the highest underground waterfall in Devon. It will be glorious!

This activity is for people who have camped with FSC at least twice before, but new cavers are particularly welcome.

Deduct £5 if travelling independently to and from Totnes/Newton Abbot.

**Dates:** Saturday February 13 to Thursday February 18      **Fee:** £160  
**Travel:** Train from Paddington to Totnes/Newton Abbot      **Ages:** 8 to 17.11

## MAKIN' AND SHAKIN' Camp 2

**Camp Chiefs:** Dave Monk and Jan Binnie  
**Organiser:** Sam Raphael

Can seven days and nights change a lifetime? Is it safe to come down from the trees? Will the lodge abandon tents for teepees? Are there five ways to make a fire? Can we dance 'til dawn comes home whatever the weather? What height is a tree-house? Danbury Wood will be our stage at Easter. Bring two sleeping bags, shorts, musical instruments, energy and an exploring outlook for a 'rapido' 168 hours!

**Dates:** Friday April 2 to Friday April 9      **Fee:** £130  
**Travel:** Coach from London      **Ages:** 8 to 17.11

Please apply for camp 1 on BLUE forms and send them to:  
Brenda Hatcher, 8 Broadview, Fryent Way, London NW9 9SG

Please apply for camp 2 on BLUE forms and send them to:  
Rod & Julie Gritten, Traian Llanfrothen, Penrhyndeudraeth, Gwynedd LL48 6SW

## RUSHALL MANOR

### WORK WEEKENDS

Camps 48 & 51

**Camp Chief:** Rad Wagon  
**Organiser:** Joel Smith

The John Simmonds Trust continues its rural community education projects at the golden valley site at Pangbourne near Reading. Forest School Camps plans two short maintenance camps to aid their progress.

**Dates:** To be announced - Friday evening to Sunday      **Ages:** 16+

## GREYHILL WORK CAMP Camp 49

**Camp Leaders:** Stuart Peachey and Colin Mutty

Greyhill Farm lies 800 feet above the Bristol Channel and is being restored to its early 17th century condition for use in environmental and historical education as well as for conserving rare breeds and cultivated plants.

The work this summer involves building a roof for the barn, managing woodland and hay meadows and spoiling the rare breed animals. Please bring strong gloves and musical instruments

**Dates:** Saturday July 3 to Sunday July 18      **Ages:** 18+

## GREYHILL WORK CAMP Camp 50

**Camp Chief and Organiser:** Jeremy Cossey

Older Pathfinders and Staff are welcome to come to this beautiful site overlooking the Severn Estuary. Set up in the side of a hill we are (re)developing an authentic 17th Century agricultural smallholding. Our main work will be using stone and timber hopefully to complete the roof on the main farm. However we'll also have sheep and pigs to attend to, gardens to dig, orchards to clear and 101 other tasks. Our reward? Sunsets over the sea, campfires, songs, and a relaxed atmosphere. All are welcome whether old or young, active or calm.

**Dates:** Saturday August 14 to Saturday August 21      **Ages:** 16+

# WORK CAMPS

At camp we may take the fabric of the countryside for granted, but work camps give us the chance to redress that balance a little. Work camps involve all kinds of tasks: coppicing, hedging, path laying, and repairing or reconstructing traditional farm buildings. FSC work camps are cheap, convivial and confidence-building. The camps are generally planned for the over-seventeens, with no upper age limit of course. They are run on similar lines to small standing camps.

There are no special qualifications for volunteers. Everyone can contribute to ensuring that a workcamp is an enjoyable and memorable experience. In fact it's a great opportunity to try your hand at glee or catering as well as woodcraft.

## HOW TO APPLY

There are no fees or expenses. You travel independently to the camp site or collection point and will be asked to contribute the appropriate amount for the running costs of the camp. This is usually at least £3.00 per day. You need a tent, very old clothes and waterproofs.

Week-long camps may qualify for the residential requirement of the Duke of Edinburgh Award scheme (Gold). Volunteers from abroad and older campers new to FSC are especially welcome.

Information and enrolment forms may be obtained from the FSC Work Camps Secretary (an A5 Stamped Addressed Envelope is appreciated):

• **Unity Stack, 1 Church View, Church Hill, Lydbrook, Glos. GL17 9SN**



## our story

50 YEARS UNDER CANVAS WITH  
FOREST SCHOOL CAMPS



Most of our stories of Forest School Camps are passed on by word of mouth. This book is a collection of memories, anecdotes and

photographs. If you would like to order a copy of **our story** please send your name and address together with a cheque for £3.50 (made payable to 'Forest School Camps' to:

'OUR STORY', c/o 40 MILES AVENUE, LEIGHTON BUZZARD, BEDFORDSHIRE, LU7 8LG



## EASTER IN DORSET

Camp 3

Camp Chief: Daphne Carré  
Organiser: Vanessa Cooke

Come and join a small and friendly camp on a new site in the heart of the forest. There will be opportunities to hunt the Easter Rabbit, make shelters and climb trees. The more energetic members of the lodge will be able to reach the sea on hike. We will keep out the cold with roaring camp fires but don't forget 2 sleeping bags and good waterproofs so that you are ready for the challenges of Easter camping.

Dates: Saturday April 3 to Saturday April 10  
Travel: Train from Waterloo to Dorchester South

Fee: £130  
Ages: 8 to 17.11

Please apply for the above camp on BLUE forms and send them to:  
Rod & Julie Gritten, Traian Llanfrothen, Penrhyndeudraeth, Gwynedd LL48 6SW



## NEW FOREST ASSOCIATE CAMP

Camp 45

**Camp Chiefs:** Hazel Powell and Marcos Guillen  
**Organiser:** Adrian Matthews

You are invited to join an FSC group at the 2nd International Woodcraft Camp. It will be hosted by the Order of Woodcraft Chivalry, in the New Forest where the Order founded the original Forest School. All the normal FSC camp activities will take place, shared with other groups who have many of the same aims and ideas.

**Dates:** Saturday July 24 to Sunday August 1

**Fee:** £50 for Adults and Pathfinders and £30 for under 15s

## RUSHALL ASSOCIATE CAMP

Camp 46

**Camp Chief:** Rachel Barker  
**Organiser:** Adrian Matthews

This working Berkshire farm is a delightful site for this magical thing we call FSC. You'll be welcome whether you come alone or with your family. Come and do as many or as few of the activities as you want. Bring (cheapish!) binoculars and a field guide if bird watching appeals. Lead an activity if the spirit moves you, or just go with the flow!

**Dates:** Friday August 6 to Sunday August 8

## NORTH YORKSHIRE ASSOCIATE CAMP

Camp 47

**Camp Chief:** Steve Fletcher  
**Organisers:** David and Hilary Hughes

This camp will be held on the North York Moors. We will build a close and caring community to enjoy a wide range of new and traditional activities including a Night Game, Lodge Common Council and Merrymoot.

**Dates:** Thursday August 26 to Monday August 30

## SHINING CLIFF ASSOCIATE CAMP

Camp 41

**Camp Chief and Organiser: Adrian Matthews**

Come and taste early spring in the Derbyshire dales. The long weekend will give us time to unwind and explore the magnificent and varied countryside from our home in the woods. Suitable for children of all ages - make sure you bring warm things, like mummies and daddies with you, as early May can be a bit nippy.

**Dates: Friday April 30 to Monday May 3**

## MAGDALEN FARM ASSOCIATE CAMP

Camp 42

**Camp Chief: Lorna English  
Organiser: Adrian Matthews**

A bank holiday weekend at Magdalen organic farm near Winsham on the Somerset/Dorset border. The Magdalen experience embraces meadow and woodland, farm animals, streams and the River Axe which flows alongside the site.

**Dates: Saturday May 1 to Monday May 3**

## MENDIP ASSOCIATE CAMP

Camp 43

**Camp Chief: Tom Broadhurst  
Organiser: To be announced**

Sample the Mendip Hills' delights - walking, some caving (equipment provided) and beautiful countryside. We hope to return home tired and happy after this summer weekend.

**Dates: Friday June 18 to Sunday June 20**

## RUSHALL ASSOCIATE CAMP

Camp 44

**Camp Chiefs: Annie Hanson and Garry Saunders  
Organiser: Adrian Matthews**

Aiming to give a taste of FSC in this field surrounded by woodland in a gentle valley of the river Pang. We will take walks, perhaps at sunset, to hear wildlife and take in the sky. We will create structures from whatever nature provides and hope the weather is kind. The site is well suited to young children with facilities to tempt even the shyest of campers. Be a part of the community: we talk, we sing, we cook, we clear up, we go home, and we remember.

**Dates: Friday July 2 to Sunday July 4**

# SPRING WEEKEND CAMPS

## THE GURN GOES ON - GRIMSBY 7 HULL 7

Camp 4

**Camp Chiefs: Vic Daggart and Giles Last  
Organiser: Marilyn Hull**

We shall return to Danbury Wood to sing to the swamp thang, pack the days with ourselves, and find a place for all, mingling, making, playing and performing among the trees. Do not forget this is the wicked hot shoe shuffle for all shapes, sizes and abilities ... all possibilities. So come on sisters and brothers - shake your funky booty down amongst the bluebells.

**Dates: Friday April 30 to Monday May 3  
Travel: Coach from London**

**Fee: £55  
Ages: 6.6 to 17.11**

## VENICE

Camp 5

**Camp Chief and Organiser: Roddy Brooks**

The first of two weekends walking and riding with a narrowboat on the edge of the West Midlands and Black Country. Traditional camp stuff in the evening, exploring industrial heritage by day. Waterproofs and good footwear PLEASE.

Deduct £5 if travelling independently to and from Wolverhampton.

**Dates: Saturday May 1 to Monday May 3  
Travel: Train from Euston to Wolverhampton**

**Fee: £55  
Ages: 8 to 17.11**

## LAZY CYCLING WEEKEND

Camp 6

**Camp Chief: Anna Malos  
Organiser: Daniel Simon**

A gentle introduction to having fun on bikes in the Essex/Suffolk countryside with plenty of tea shop stops and almost no hills! No cycle experience necessary. All you need is a touring or mountain bike, panniers and a love of the open road with the wind in your hair.

For information about borrowing or buying bicycles and equipment call Daniel or Anna on 0181 986 3844. Deduct £3 if travelling independently to and from Witham. This camp is for those who have camped with FSC at least twice before.

**Dates: Friday May 14 to Sunday May 16  
Travel: Train from Liverpool Street to Witham**

**Fee: £39  
Ages: 12 to 17.11**

Please apply for the above camps on BLUE forms and send them to:  
Brenda Hatcher, 8 Broadview, Fryent Way, London NW9 9SG

## WHITSUN CAMPS

### SHINING CLIFF

Camp 7

**Camp Chiefs:** BJ Godfrey and Rob Whitehead  
**Organiser:** Thelma Jones

Come and make merry in this beautiful bluebell wood in the heart of Derbyshire. We'll be exploring the nearby caves and pools and using the surrounding materials for creating shelters, ovens, fires etc... Be prepared for lots of laughter, song and adventure.

**Dates:** Saturday May 29 to Saturday June 5  
**Travel:** Train from St Pancras to Derby

**Fee:** £160  
**Ages:** 6.6 to 14.11

### MAGIC IN THE MOUNTAINS

Camp 8

**Camp Chiefs:** Jake Holloway and Tina Vsherwood  
**Organiser:** Judith Cooke

Together we could make anything happen in the magical mountains of Wales. In one week playing and working together we will create and make a community of friends, with enough energy to fill the valleys with our laughter. This will be your camp. Tell us what you want and we can make it happen.

**Dates:** Saturday May 29 to Saturday June 5  
**Travel:** Train from Euston to North Wales

**Fee:** £160  
**Ages:** 6.6 to 17.11

### WHITSUN IN WALES

Camp 9

**Camp Chiefs:** Daniel Jacks and Corinne Howells  
**Organiser:** Jane Bisset

We intend this to be a cosy, woodcrafty sort of camp with plenty of singing and fun. Come prepared to have your woodcraft skills challenged.

**Dates:** Saturday May 29 to Saturday June 5  
**Travel:** Train from Paddington to South Wales

**Fee:** £160  
**Ages:** 6.6 to 14.11

## ASSOCIATE MEMBERSHIP OF FSC

Parents and supporters who become Associate Members of FSC receive news of FSC's activities in two newsletters a year, and a copy of the FSC magazine when it is published. There are weekend camps especially for Associate Members and their families. The annual subscription is £5. The Associate Members' Secretary will send you a form and further details on request.

Associate Members and FSC staff are all welcome at family camps, with or without their children. To apply for a family camp please use the form sent to all Associate Members, or write directly to the appropriate organiser. There is no age limit, upper or lower, and these camps are particularly suitable for very young children who may be camping for the first time. Supervision of the children is the responsibility of their parents, and there is no organised travel, allowing us to keep the fees to a minimum. Parents and children share in the communal cooking, with food and equipment provided by the camp. There will be many of the usual FSC activities like rally, singing around the campfire, games, walks, and whatever the site and our ingenuity can produce.

*A parent who becomes an Associate Member or attends a family camp does not give their child any priority on the waiting list to attend any of our main camps.*

#### Associate Members' Secretary

- Margaret Fletcher, 61 Grosvenor Avenue, Newcastle-upon-Tyne NE2 2NP

#### Organisers

- Adrian Matthews, 6 Almack Road, London E5 ORL
- David and Hilary Hughes, Malkin House, Brow Lane, Holmfirth, West Yorkshire HD7 1RJ

### GREYHILL FAMILY WORK CAMP

Camp 40

**Camp Chief and Organiser:** Jeremy Cossey

Greyhill is a beautiful site near Chepstow that consists of 30 tiny fields overlooking the Severn Estuary. It is being (re)developed by the Living History Conservation Group (Registered Charity 1069967) into a 17th Century smallholding for schools to use it. Staff, pathfinders aged 16 or over, and associates are welcome to come and help us sort out oak timbers for the farmhouse roof, dig gardens for planting, clear orchards, stonewall and 101 other things. Come and learn in a relaxed atmosphere with warm fires in the evenings inside the bare cottage filled with our talk and songs.

**Dates:** Saturday April 3 to Saturday April 10  
**Unaccompanied Age:** 16+

Please apply for the above camps on BLUE forms and send them to:  
Mary Brown, 32 Castellain Road, London W9 1EZ

# HADDENHAM STORES CENTRE



All the equipment used on our camps is stored and maintained at our centre near Ely in Cambridgeshire, where enthusiastic working parties gather monthly throughout the year to repair any damage and to pack the equipment for the camps. Additional pairs of hands are always needed, both to deal with the camping equipment and to improve the structure of the buildings. Transport can usually be provided from London, Sheffield or Ely.

For further details of maintenance weekends please contact:

• **Dave Monk, 178 Upland Road, London SE22 0DQ**

## VENICE AT WHITSUN

Camp 10

**Camp Chief and Organiser: Roddy Brooks**

The second of two weekends walking and riding with a narrowboat on the edge of the West Midlands and Black Country. Traditional camp stuff in the evening, exploring industrial heritage by day. Waterproofs and good footwear PLEASE.

Deduct £5 if travelling independently to and from Wolverhampton

**Dates: Saturday May 29 to Monday May 31**

**Fee: £55**

**Travel: Train from Euston to Wolverhampton**

**Ages: 8 to 17.11**

## NORTH YORKSHIRE ADVENTURE

Camp 11

**Camp Chief: Steve Fletcher**

**Organiser: Marian Armitage**

We will set out from a base camp to explore the North York moors and coastline. We will carry our equipment with us, buy and cook in small groups, and stop overnight at different sites. We will return to base camp for a traditional Merryoot and Lodge Common Council.

This will be a small camp, particularly suitable for children new to mobiles, but who are experienced FSC campers, having camped with us at least twice before.

**Dates: Saturday May 29 to Saturday June 5**

**Fee: £160**

**Travel: Train from King's Cross to Darlington**

**Ages: 10 to 17.11**

## BULL POT OF THE WITCHES

Camp 12

**Camp Chief and Organiser: Aggie Forster**

Bull pot of the witches; Mistal; Pippikin pot. Bull pot farm is miles from anywhere, surrounded by hills and holes. The goats like it and so will you, magical shapes in the waterfalls and it's eerie when Lech fell rises, dark water from the earth. Expect either blissful sun and underground adventure, or viewless drizzle, hugging the fireside. Either way the company will be good.

This potholing activity is for experienced FSC campers who have camped with us at least twice before. Deduct £8 if travelling independently to and from Oxenholme.

**Dates: Tuesday June 1 to Friday June 4**

**Fee: £120**

**Travel: Train from Euston to Oxenholme**

**Ages: 8 to 17.11**

Please apply for the above camps on BLUE forms and send them to:

Mary Brown, 32 Castellain Road, London W9 1EZ

## EARLY SUMMER CAMPS



### CANOE TRAINING WEEKEND

Camp 13

**Camp Chief:** Hazel Powell  
**Organiser:** Pete Blackman

Come and get wet gracefully in the Great River Ouse! This is a quick introduction to canoe camping. We will paddle upstream to a small weir and rapidly learn to control our canoes in fast moving water. Then, in small groups, we will buy our food (using camp funds), work out how to keep it dry, and later cook it on Primus or Trangia stoves. Joining us at this river bank camp just north of Milton Keynes, will be a staff training group, who are likely to get even wetter than us, since capsizing will be compulsory for them, but optional for us. Who are the lucky ones? Beginners to canoeing are welcome, but everyone must be able to swim 50 metres.

This activity is for experienced FSC campers who have camped with us at least twice before.

**Dates:** Friday June 25 to Sunday June 27  
**Travel:** Train from Euston to Wolverton

**Fee:** £55  
**Ages:** 10 to 17.11

Please apply for the above camp on BLUE forms and send them to:  
Brenda Hatcher, 8 Broadview, Fryent Way, London NW9 9SG

## AUTUMN AND LATER...



### MENDIP POTHOLE

Camp 31

**Camp Leaders:** Aggie Forster and Colin Mutty  
**Organiser:** Helen Grove-White

Beneath the sunlit land lies another world, a place of caverns, crystal curtains, and cave helmets. The October caving camp is a truly sublime experience, and well suited to those who love mud and magic. The camp will include walking and topside activities, but of course there will still be plenty of time for adventure and discovery in the dark mysterious world beneath the earth's surface, full of unexpected challenges and delights. A camp of many warm welcomes and home comings. This camp is for those who have camped with FSC at least twice before.

**Dates:** Saturday October 23 to Wednesday October 27  
**Travel:** Coach from London

**Fee:** £140  
**Ages:** 8 to 17.11

Please apply for the above camp on BLUE forms and send them to:  
Brenda Hatcher, 8 Broadview, Fryent Way, London NW9 9SG



## FARNDALE ONE

**Camp Chiefs:** Ruth Steed and Nick Steed  
**Organiser:** Joan Fuller

People of all shapes and sizes are welcome to help build a traditional FSC community in the beautiful Yorkshire Dales. Come with songs in your heart and ideas in your head because on this camp we will be building and flying kites. We hope to carry the camp chiefs from the kitchen to the dining circle in style.

**Dates:** Wednesday July 28 to Tuesday August 10  
**Travel:** Train from King's Cross to York

**Fee:** £240  
**Ages:** 6.6 to 17.11

Camp 19

## BORROWBECK ONE

**Camp Leaders:** Maggie Hudson and Mark Bloch  
**Organiser:** Judy Stoker

We will make a trusting community in beautiful Lake District surroundings. We will share our skills, knowledge and stories to make a camp where we can all learn from, and value, each other's contributions. Bring with you ideas and enthusiasm ready to build a memorable camp!

**Dates:** Wednesday July 28 to Tuesday August 10  
**Travel:** Train from Euston to Oxenholme

**Fee:** £240  
**Ages:** 6.6 to 17.11

Camp 20

## NORTH PEMBROKE ONE

**Camp Chiefs:** Malcolm Keith and Steve Rudall  
**Organiser:** Anne Harrison

This is a new camp site for FSC, set amongst the rolling hills of North Pembrokeshire. The coast is within hiking distance, and this beautiful area invites us to explore new horizons, and set ourselves new challenges. The site itself is near a small wood which will give us shelter, and there is a small fast-flowing stream for cooling ourselves after the day's activities. We aim to create an active and caring community on this magical hillside. With your help and enthusiasm we can make this camp an exciting adventure.

**Dates:** Wednesday July 28 to Tuesday August 10  
**Travel:** Train from Paddington to Carmarthen

**Fee:** £240  
**Ages:** 6.6 to 17.11

Camp 21



## IT'S HUNKY-DORY AT HODORE

**Camp Chiefs:** Vic Doggart and Sarah Davies  
**Organiser:** Vic Doggart

We'd like to tell you a story, of life so Hunky-dory  
With 24 fabulous campers, eating Paul and Donal's dampers.  
The days with fun we'll pack, so come and have a crack  
Its one to one, and lots of fun  
We'll see you there with special care and magic in the meadow.

Camp 22

**This camp is only for children with special needs**

Pathfinder helpers are welcome and essential at a reduced fee of £50.  
Please apply directly to Vic Doggart, at the address below.

**Dates:** Wednesday July 28 to Friday August 6  
**Travel:** Coach from London

**Fee:** £150  
**Ages:** 6.6 to 17.11 & PF Helpers

Please apply for the above camp on YELLOW forms and send them to:  
Vic Doggart, 69 Charles Rowan House, Margery Street, London WC1X 0EJ

Please apply for the above camps on YELLOW forms and send them to:  
Ruth Steed, 14 Highfields, Forest Row, East Sussex RH18 5AJ

## THE NUNGWI MOBILE

Camp 23

**Camp Chief:** Dan Brandenburger  
**Organiser:** Jo Broadhurst

This will be a walking and activity camp exploring the mountains, rivers, forests and sunspots of the North Wales countryside. The camp will be for those with an active outlook on life. However, it will be for those who want to stretch their minds, not for those who want to stretch their bodies. We hope that all involved in this camp will remember it for the inspiration it brings them and for the new friends we will all make.

This camp is for those who have camped with FSC at least twice before.

**Dates:** Wednesday July 28 to Tuesday August 10      **Fee:** £240  
**Travel:** Train from Paddington to Shrewsbury      **Ages:** 13 to 17.11

## TO THE REEKS, TO THE REEKS

Camp 24

**Camp Chief:** Will Coppola  
**Organiser:** Kath McQuail

Travelling on two wheels (what other way is there to travel?) we will explore the south west corner of Ireland. Starting from Cork we will cycle to Bantry Bay by way of the crinkly bits of coastline, looking in perhaps on the Slieve Miskish and the Boggeragh mountains, and aiming to reach Macgillycuddy's Reeks. The route will be varied and is sure to be beautiful. As well as the joys of the wind at our backs and the pedals under our feet, we will remember all the things that make camp a success; so don't forget your laughter, song, and kindness, as well as all those nifty cycling accessories.

All you need is a touring or mountain bike with rack and panniers.

This camp is for those who have camped with FSC at least twice before.

**Dates:** Wednesday July 28 to Tuesday August 10      **Fee:** £270  
**Travel:** Train from Paddington to Swansea, Ferry to Cork      **Ages:** 13 to 17.11

Please apply for the above camps on YELLOW forms and send them to:  
Ruth Steed, 14 Highfields, Forest Row, East Sussex RH18 5AJ

## TEIFISIDE ONE

Camp 17

**Camp Chief:** Jules Holmes  
**Organiser:** Jean Napier-Ford

If we mix all the ingredients of a traditional standing camp with a large measure of art, craft and creative material, add a serious touch of recycling, throw in some unexpected extras and brew for two weeks, what do we get? I don't know but it should be good fun experimenting! Zany ideas and inspirations welcome. See you there folks.

**Dates:** Wednesday July 28 to Tuesday August 10      **Fee:** £240  
**Travel:** Train from Paddington to Swansea      **Ages:** 8 to 17.11

## HARLECH ONE

Camp 18

**Camp Chiefs:** Andy Freedman and Nico Brown  
**Organiser:** Jayne Jenkins

We'll be listening, at this magical place, to streams, woods, mountains, and even the sea. We'll also be listening to each other - singing, having fun, saying what we think, playing music, having ideas. This way we join in the magic, and never forget it.

**Dates:** Wednesday July 28 to Tuesday August 10      **Fee:** £240  
**Travel:** Train from Euston to Llandudno      **Ages:** 6.6 to 17.11

## SONGBOOKS

**Songbooks £2.50**

**Plastic zip-wallets 50p (handy A5/songbook size)**

(Postage + Packing £1.00 for first book, 40p for each subsequent book)

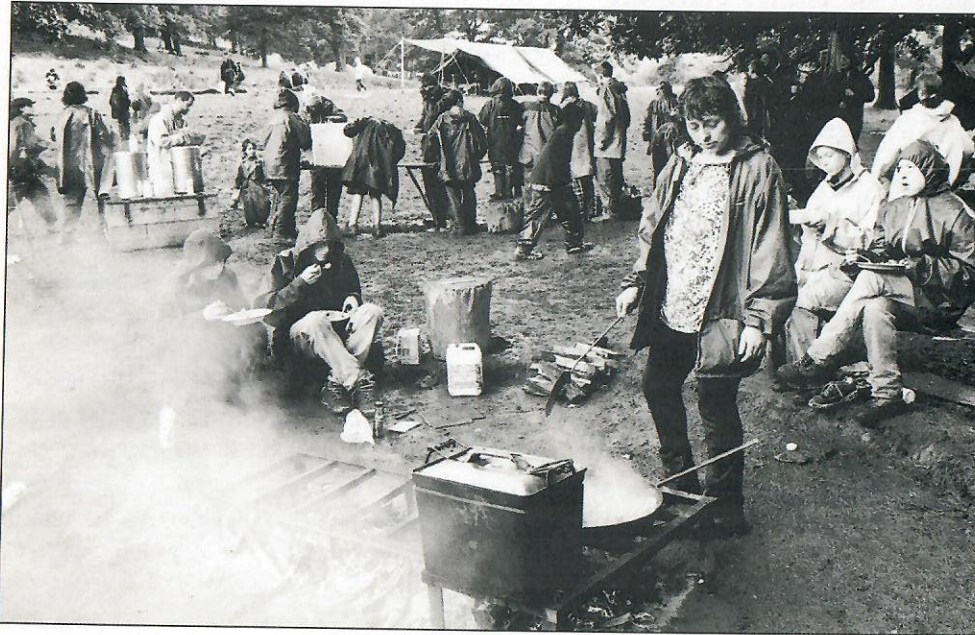
Order from: **Ruth Gleadow, 36 Tytherton Road, London N19 4QA**

Make cheques payable to FSC, don't forget to include your address!

Please apply for the above camps on YELLOW forms and send them to:  
Ruth Steed, 14 Highfields, Forest Row, East Sussex RH18 5AJ

# MAIN SUMMER CAMPS

Unfortunately, because of the large number of applications for children's places for these camps, and a shortage of staff to meet this demand, we regret that we cannot guarantee a place for all applicants wanting to go on main Summer camps.



## RADNOR ONE

Camp 16

**Camp Chiefs:** Andy Doyle and Leslie Holden  
**Organiser:** Margaret Fletcher

A full range standing camp set in the beautiful landscape by the river Ithon. We will aim to make an active, creative and caring community from the skills and spirit everyone can give. Come prepared to enjoy the summer, mud, flood or sunshine, and to live in harmony with ourselves and our neighbours.

**Dates:** Wednesday July 28 to Tuesday August 10      **Fee:** £240  
**Travel:** Train from Paddington to Worcester      **Ages:** 6.6 to 17.11

Please apply for the above camp on **YELLOW** forms and send them to:  
Ruth Steed, 14 Highfields, Forest Row, East Sussex RH18 5AJ

## RADNOR TWO

Camp 25

**Camp Leaders:** Julian Welsh and Francis Cooper  
**Organiser:** Carolyn Whalley

What are you ready for? Finding a new friend? Chopping 50 onions? Holding hands with 100 people? Listening to yourself? Putting yourself second? Feeling happy in waterproofs? Sharing with sheep? Laughing in the rain? Singing under the stars? Changing your life? Radnor 2.

**Dates:** Thursday August 12 to Wednesday August 25      **Fee:** £240  
**Travel:** Train from Paddington to Worcester      **Ages:** 6.6 to 17.11

## TEIFISIDE TWO

Camp 26

**Camp Chief:** Daniel Simon  
**Organiser:** Ali Compton

We will be establishing our small community on the banks of the River Teifi. Adventurous days of swimming, walking, dancing and woodcraft will give way to beautiful campfires at night under the Welsh stars. So come in good voice to make the valleys ring both day and night with our song and laughter.

**Dates:** Thursday August 12 to Wednesday August 25      **Fee:** £240  
**Travel:** Train from Paddington to Swansea      **Ages:** 8 to 17.11

## WATERWORLD TWO

Camp 27

**Camp Chiefs:** Polly Shields and Dinah Bornat  
**Organiser:** Penny Wiles

Our casting director is looking for someone like you to immerse yourself in a warm sharing community with plenty of bubbles (at Harlech). Splash about with the weather, new friends, and the sea; dip into mountains and campfire stories; soak yourself in talk, cocoa, and song. You could be a star!

**Dates:** Thursday August 12 to Wednesday August 25      **Fee:** £240  
**Travel:** Train from Euston to Llandudno      **Ages:** 6.6 to 17.11

Please apply for the above camps on **YELLOW** forms and send them to:  
Ruth Steed, 14 Highfields, Forest Row, East Sussex RH18 5AJ

## BORROWBECK TWO

Camp 28

Camp Chief: Rad Wagon  
Organiser: David Berg

The year of the frog\* brings much in the manner of wetness. The delightful gapoloshing of wellies, the winsplatter of rain drenched trees, and the groar of the beck in full flow through the field are all sounds that will accompany a melodious grut-freddling from the high points of the terrain. Of course the sun might spoil this widyll, but crosdigis everywhere play to the Gods themselves. (\*roughly interpreted)

Dates: Thursday August 12 to Wednesday August 25      Fee: £240  
Travel: Train from Euston to Oxenholme      Ages: 6.6 to 17.11

## BLUE SKIES TOO

Camp 29

Camp Chiefs: Lucy Jaffe and Ziggy Melamed  
Organiser: Jess Grurgeon

Join us for magic and merriment. This camp is for people of all ages, shapes, sizes, abilities, colours, and haircuts. The challenge will be to adapt the site for our use and pleasure. Bring musical instruments, dressing-up clothes adapt-a-site ideas plus the energy and enthusiasm for an action packed two weeks.

Dates: Thursday August 12 to Wednesday August 25      Fee: £240  
Travel: To be announced      Ages: 6.6 to 17.11

## DINGLE DIGGERS SEMI-MOBILE

Camp 30

Camp Chief and Organiser: Peter Taylor

This semi-mobile for younger campers will include a little of the challenges of a full mobile. Most nights will be on 3 or 4 sites by the sea, but we will spend a couple of nights out in the mountains. There will be lots of swimming, sand sculpture, and mountain climbing for those who are interested. Sunshine is guaranteed this year!!!

This camp is for those who have camped with FSC at least twice before.

Dates: Thursday August 12 to Wednesday August 25      Fee: £240  
Travel: Train from Paddington to Holyhead      Ages: 9 to 15.11

## SMALL WHEELS, LOW MILEAGE, ONE CAREFUL OWNER

Camp 14

Camp Chief: Dave Monk  
Organiser: Jeremy Monson

A cycle w/e for the smaller leg with all the elements of a full-on mobile camp, but without the need for all the gear. This is a 1st Time Touring Taster for those who have been afraid to ask.

We will be mobile each day, shopping as we roll by, cooking in small groups with different campsites for Friday and Saturday nights. A support vehicle will carry our equipment from site to site but if you have panniers and would like to use them please do!

The minimum requirements for the w/e are a well maintained bike that fits your leg length with 5 gears, mudguards, rear carrying rack, and one 50cm bungee hook. Cycle helmets will be worn at all times on the road. Bikes deemed unsafe at the escorted departure will be refused entry to the Camp.

This activity is for experienced FSC campers who have camped with us at least twice before. Deduct £3 if travelling independently to and from Witham

Dates: Friday June 25 to Sunday June 27      Fee: £39  
Travel: Train from Liverpool Street to Witham      Ages: 10 to 14.11

## WEEKEND AT HODORE

Camp 15

Camp Chief: Jess Mace  
Organiser: Paloma Sparrow

Children of all ages and abilities are welcome for a weekend of fun and adventures! This site is particularly suitable for children with physical disabilities. The camp will feature delicious vegetarian catering.

Pathfinder helpers are welcome at a reduced fee of £15

Dates: Friday July 9 to Sunday July 11      Fee: £50  
Travel: Coach from London      Ages: 6.6 to 17.11 & PF Helpers

Please apply for the above camps on YELLOW forms and send them to:  
Ruth Steed, 14 Highfields, Forest Row, East Sussex RH18 5AJ

Please apply for the above camps on BLUE forms and send them to:  
Brenda Hatcher, 8 Broadview, Fryent Way, London NW9 9SG