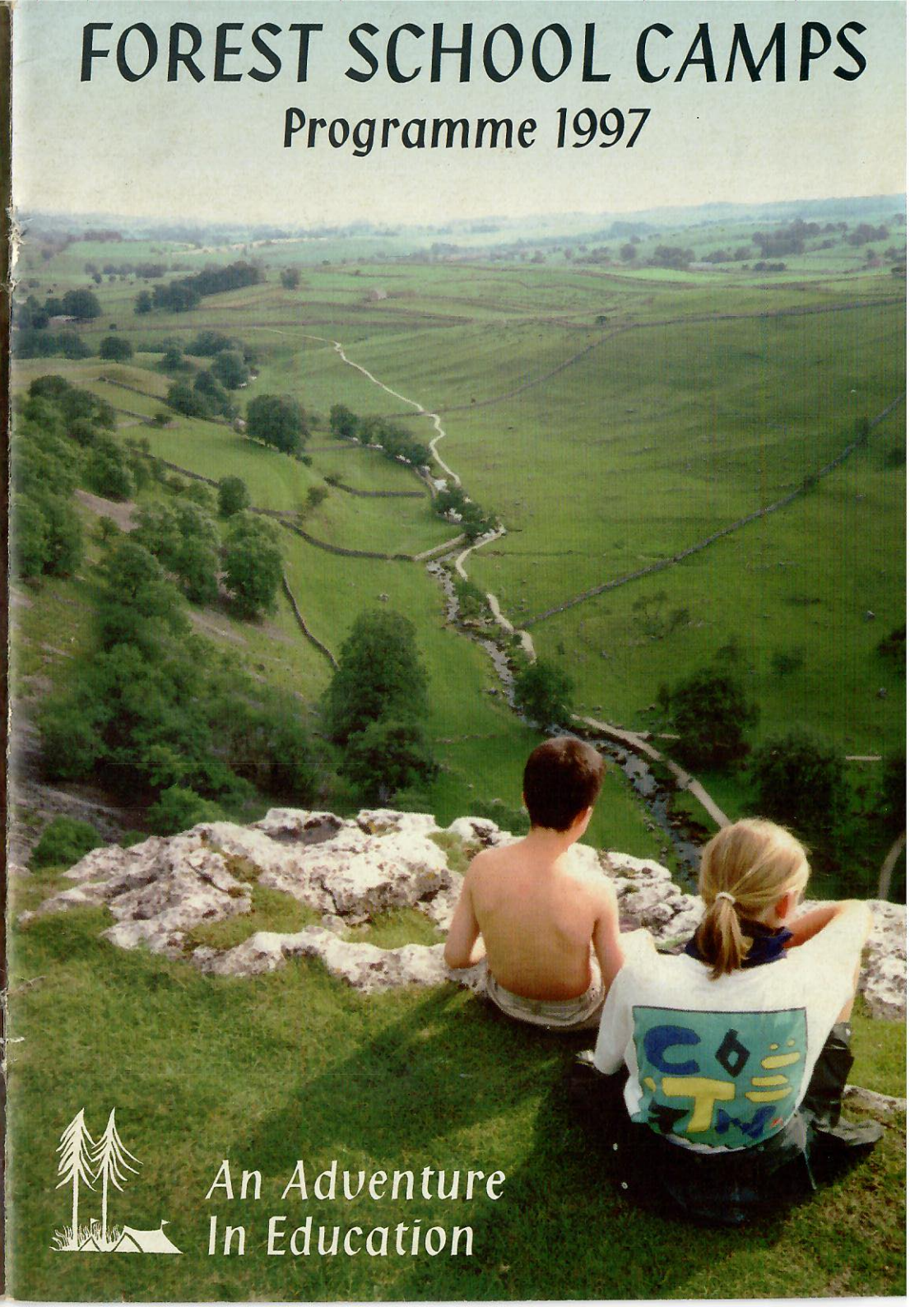


# FOREST SCHOOL CAMPS

Programme 1997



An Adventure  
In Education

# FOREST SCHOOL CAMPS

FSC is not a commercial holiday company; it is an educational charity, a voluntary organisation. All our officers and staff are unpaid volunteers.

*Forest School, which ran in the 1930s, drew its philosophy from progressive educators, from the Woodcraft movements and the American Indians, from Quakers and others. Special importance was attached to the experience of boys and girls, children and adults, learning to work and play together close to nature.*

FSC began in 1948 when former pupils and staff came together, anxious to develop and pass on the ways and values of Forest School which by then had closed.

*Our education is about discovering for oneself how to do something rather than being told in the abstract. Children and staff find themselves in situations that encourage this; the outdoors demands and encourages learning.*

We remove unnecessary authority and, with due regard for safety and legality, encourage children to take responsibility and to reach their own decisions on small and not-so-small issues, individually or as members of a group.

*At camp we aim to teach ourselves how to live with independence and responsibility; concern and care for ourselves, other people and the environment; resourcefulness and self-confidence; tolerance and respect.*

*FSC is determined that all people be treated equally regardless of age, gender, sexual orientation, ethnic origin, religion and disability. These are high ideals - we don't always succeed.*

An American Indian belief is that you will only be in touch with nature if you 'sit and sleep on the earth'. Their feeling for the wholeness of life on our planet is expressed in some of our rituals and the names we give things at camp.

*The philosophy developed at camp is practised throughout the administrative organisation of FSC. When you enrol your children you become a part of FSC and this approach. Many staff members begin their association with FSC as parents or campers.*

Camp is great fun, though at a practical level it can also be cold and wet, and is often dirty. Despite this, many people camp again and again and again. Join us to find out why!

## CONTENTS

How to enrol	1	Associates Camps	20
Camp Life	4	Work Camps	22
Easter and Earlier	5	Regional Camps	24
Spring Weekends	7	Preparing for Camp	25
Whitsun Camps	9	Kit List	26
Early Summer Camps	11	New Staff	28
Main Summer Camps	12	Addresses	29
Autumn And Later	19	List of Camps	31

NOTES...



## HOW TO ENROL



Early application is recommended. Applications are dealt with in order of receipt and summer camps are often full before April.



All children who camp with us are Youth members of FSC until they reach the age of 18, when we hope to welcome them as staff.



Members are placed first. New applicants may have to go on to a waiting list. We will not normally accept applications for summer camps after May 31st.

- Please apply for summer camps on yellow enrolment forms and for all other camps on blue enrolment forms

- Please send a separate form for each child and camp; if necessary photocopy extra forms.
- Please send completed forms to the appropriate enrolment secretary. A full list of addresses appears on page 29 .
- Please send a separate deposit for each child and camp:

*For camps of 7 days and longer, send £30. This is not returnable once you are offered a place on a camp of your choice.*

*For camps of 6 days or less, send the full fees. Of this, £10 is treated as a non-returnable deposit, once you are offered a place on a camp of your choice.*

- Please write the camper's name on the back of your cheque/P.O./money order and make it payable to 'Forest School Camps'.

- We now require two stamped addressed envelopes per application form. One is used to give confirmation of our receipt of your enrolment fee and the second to offer a place at camp.
- For the main summer camps only, the remainder of the fees may be paid in three instalments; please indicate on your enrolment form if you wish to use this method of payment.
- Family discount - for families where three or more children attend summer camps there is a reduction in fees of £15 per child.
- All fees for summer camps must be paid in full by May 31st. Fees for Whitsun camps must be paid in full six weeks before the camp.
- Fees printed in the programme include return fares from London. Those travelling separately will receive a rebate.



If a child misses the escorted party it is the parent's responsibility to arrange his or her transport to the site.



We make every effort to place children in the camp of first choice, but we also try to balance each camp by age, sex and experience. Because we try to provide a continuous experience for children, priority for membership is given to siblings of members.



New campers are not normally accepted after their fifteenth birthday as there are only enough places for those children who have camped with us over the years.



Children are not normally enrolled on activity camps until they

have attended two standing camps. This applies even if your child has camped with other organisations. The standing camps impart the basic FSC philosophy essential for activity camps.

Do not ask for more than two children (other than siblings) to camp together. Children who apply to camp together may limit our ability to place them on their choice of camps.



## PARENTS' MEETINGS

There will be two meetings in central London for parents and sponsors whose children are enrolled on this year's camps. The first will be on 19th April for those attending spring, Whitsun or early summer camps, and the second on 28th June for those going to summer camps. These are opportunities for you to meet some of the staff of the camps and to find out more about FSC. Full details of the meeting will be sent to you by your camp organiser. If you do not have a child enrolled but would like to attend the June meeting, details may be obtained from the Secretary after 1 June.

## ...AND WHEN IN 1997

	Dates	No.	Name	Ages	
easter	17 Feb - 22 Feb	1	Moor Mud	8 - 17.11 *	
	21 Mar - 23 Mar	35	Grayhill Family work Camp	Family	
	21 Mar - 27 Mar	40	Grayhill Work Camp	17+ †	
	28 Mar 4 April	2	Easter at Hodore Farm	8 - 17.11	
spring	28 Mar - 4 April	3	Makin' and Shakin'	8 - 17.11	
	11 April - 13 April	4	Grayhill Farm	6.6 - 17.11	
	12 April - 13 April	42	Rushall Manor Weekend	17+ †	
	2 May - 5 May	5	Grimsby 0 Hull 4...	6.6 - 17.11	
	3 May - 5 May	36	Rushall Family Camp	Family	
	3 May - 5 May	6	Venice Weekend	8 - 17.11	
	3 May - 5 May	7	Hodsock Priory	6.6 - 17.11	
	16 May - 18 May	8	Cycle Training	12 - 17.11 *	
	16 May - 18 May	9	Canoe Training	10 - 17.11 *	
	24 May - 31 May	10	More May Magic	6.6 - 17.11	
whitsun	24 May - 31 May	11	Whitsun in West Cornwall	6.6 - 17.11	
	24 May - 31 May	12	Go Wild in the West	6.6 - 17.11	
	24 May - 31 May	13	Mid-Wales Walking Mobile	10 - 17.11 *	
	24 May - 31 May	14	Canoeing Up and Over	11 - 17.11 *	
	6 June - 8 June	37	Rushall Family Camp	Family	
	13 June - 15 June	15	Ashdown Forest Adventure	8 - 17.11	
	13 June - 15 June	38	Wiltshire Downs Family Camp	Family	
	22 June - 6 July	41	Grayhill Work Camp	17+ †	
	11 July - 13 July	16	Cycle Training (Junior)	10 - 14.11 *	
	11 July - 13 July	17	A Weekend at Hodore	6.6 - 14.11	
	24 July - 27 July	39	Farndale Family Camp	Family	
	30 July - 8 Aug	18	Summer in Sussex	6.6 - 17.11	
	30 July - 12 Aug	19	Teifside One	6.6 - 17.11	
	30 July - 12 Aug	20	Farndale One	6.6 - 17.11	
30 July - 12 Aug	21	Harlech One	6.6 - 17.11		
30 July - 12 Aug	22	Radnor One	6.6 - 17.11		
30 July - 12 Aug	23	Borrowbeck One	6.6 - 17.11		
30 July - 12 Aug	24	Longtown One	6.6 - 17.11		
30 July - 12 Aug	25	Braveheart II	9 - 12.11 & 16 - 17.11 *		
30 July - 13 Aug	26	Clare & Kerry Mobile	11 - 17.11 *		
13 Aug - 27 Aug	27	Young Pretender Cycle Mobile	13 - 17.11 *		
summer	14 Aug - 27 Aug	28	Longtown Two	6.6 - 17.11	
	14 Aug - 27 Aug	29	Borrowbeck Two	6.6 - 17.11	
	14 Aug - 27 Aug	30	Radnor Two	6.6 - 17.11	
	14 Aug - 27 Aug	31	Farndale Two	6.6 - 17.11	
	14 Aug - 27 Aug	32	Harlech Two	6.6 - 17.11	
	17 Oct - 23 Oct	33	Wriggling And Walking....	8 - 17.11 *	
	25 Oct - 26 Oct	43	Rushall Manor Weekend	17+ †	
	30 Dec 97 - 3 Jan 98	34	New Year on the Hill	8 - 17.11	
	later..				

## WHERE WE CAMP...



## CHILDREN WITH SPECIAL NEEDS

FSC runs some camps suitable for active children with special needs due to severe learning difficulties or physical disabilities (Camps 5, 17 and 18). We also integrate these children into other camps wherever possible. We can advise parents or sponsors which camp would be the most suitable for a particular child. We realise that children with disabilities may need one member of staff each at camp. If parents or sponsors feel that their child would enjoy camping, we ask them not to let the cost deter them from applying, as FSC may be able to arrange financial assistance. Camp no.18 is substantially subsidised by FSC and run specifically for members with severe learning difficulties. Parents or sponsors of children with severe learning difficulties should apply to:

• **Vic Doggart, 231, York Way Court, Treaty Street, London N1 0UG**

Parents or sponsors of children with physical disabilities should apply to:

• **Trevor Rawcliffe, 17A Ariel Road, London NW6 2EA**

## SPECIAL ENROLMENTS

Social workers, teachers, care workers, foster parents and others wishing to enrol children who would benefit from our camps, should contact:

• **Joan Wilmot, 19b McGregor Road, London W11 1DE**

## AID FUND

FSC funds a number of subsidised places each year for children of parents who cannot afford the full fees. Some of this money comes from the general fees and the rest is made up by additional donations and gifts to FSC. We also provide extra equipment on camp where necessary. If you would like a confidential discussion on your need for aid, please contact:

• **Donal Rush, 12 Appleshaw House, Champion Hill, London SE5 8DW**

Alternatively, if you would like to help other children enjoy the experience of FSC, please send donations - cheques payable to 'FSC (Aid Fund)' - to the Treasurer (address on page 29). If you would like to covenant money to the Aid Fund, and thus take advantage of the tax concessions on gifts to charities, please write to the Treasurer for a covenant form.

## CANCELLATION

If you have to cancel a place at a camp, please write to the camp organiser, giving the reason, as soon as possible. The enrolment fee is not returnable. If a place is cancelled within eight weeks of the start of camp it will not be possible to enrol another child and so it is unlikely that we will be able to make a refund. FSC does not insure you against cancellation. Holiday insurance (available from most travel agents and banks) would cover you against this risk. Such insurance could also cover loss or damage to a member's equipment, for which FSC cannot accept responsibility. **Please note that the final decision on refunds rests with the Children's Secretary.**

## CAMP LIFE

Most of our summer, Whitsun and Easter camps are standing camps; this means that they are based at one site. Small camps may have between 25 and 35 children on them, and large camps between 60 and 70. At standing camps we impart the basic camping skills. The children learn to pitch a tent, to look after their possessions and to keep them dry. They learn to gather and cut wood, to make fires and to cook food. Groups of campers from across the age range - clans - take turns in the kitchen to prepare the food for the camp.

Other activities during the camp may include swimming, exploring, night walks, country dancing, campfires and various FSC games. The end of camp is marked by two major events, Merrymoot and Lodge Common Council. At Merrymoot, the whole camp gathers round a roaring fire to entertain each other with a mixture of songs sketches and improvisations. At Lodge Common Council the campers gather around a more formal fire and review the camp, suggesting changes in activities or emphasis for the following year.

All this knowledge is consolidated by the two to four-day hike which takes place during the camp. Each age group goes with its staff for a distance suitable for the age and strength of its members. During the hike the children usually plan, buy (with camp funds) and cook their own meals, with help when needed.

After a few standing camps, many children are ready to try an activity camp.

Most of these camps are semi-mobile or mobile; travelling on foot, by bicycle or by canoe. The campers buy their food (with camp funds) every few days and cook in small groups.

Activity camps are generally smaller than standing camps, usually with 15 to 25 children. Some mobiles are strenuous, others are easier. The descriptions of the camps give more information. Many activity camps are for experienced FSC members only and are marked with a \* on page 31.

### NEW CAMPERS

Going to camp for the first time can seem like a scary idea. Camp life is very different from the lifestyle most of us are used to, but children fit in very quickly and enjoy the experience of living in an FSC community. Both staff and children are learning all the time, and every camp has its own good and bad times for everyone.

Each year there are some new children who are camping for the first time. Staff make every effort to ensure that new children feel at home and secure. Camp is a caring community where everyone tries to be alert to each individual's hopes and fears.

The camp starts on the escort journey, and it is a good idea for children to travel with the escorted party if possible. This is where people first start to get to know each other.

Further information and advice will come by post with the 'pre-camps circular' a few weeks before camp starts.

## USEFUL ADDRESSES

All our workers are voluntary and help Forest School Camps in their spare time. While every effort is made to deal with enrolments and correspondence promptly, some delays are unavoidable. Please write to our officers rather than telephone them.

### ENROLMENT SECRETARIES

#### SUMMER

Ruth Steed, 14 Highfields, Forest Row, East Sussex, RH18 5AJ

#### EASTER

Rod and Julie Gritten, Traian Llanfrothen, Penrhyndeudraeth, Gwynedd, LL48 6SW

#### WHITSUN

Mary Brown, 32 Castellain Road, London W9 1 EZ

#### OTHER CAMPS

Dinah Bornat, 9 Chesholme Road, London N16 0DP

#### Special Enrolments

**Learning Difficulties Enrolments**

**Physical Disabilities Enrolment**

**Aid Fund Secretary**

See page 3 for these addresses

### PROGRAMME REQUESTS AND NEW MEMBER ENQUIRIES

Filton House, 42 Payne Avenue, Aldrington, Hove,  
East Sussex BN3 5HD

#### **CHAIRMAN**

*LESLIE HOLDEN  
21 DUKES AVENUE  
LONDON  
N10 2PS*

#### **SECRETARY**

*LORNA ENGLISH  
110 BURBAGE ROAD  
LONDON  
SE24 9HD*

#### **TREASURER**

*TIM WEISSELBERG  
60 COBOURG ROAD  
BRISTOL  
BS6 5HX*

General enquiries (but please no programme requests) should be addressed to the Secretary

Forest School Camps is a company limited by guarantee and registered as a charity; Company Number 937722, Charity Number 306006. Registered address: Druid's Altar, Llangenny, nr. Crickhowell, Powys, NP8 1HD. Forest School Camps is exempt from VAT.



## NEW STAFF

If you are over eighteen and you think FSC sounds like your sort of organisation, do give us a try. We can't offer much by way of money - just expenses - but the good company of like-minded adults of all ages keeps many people coming back time and again.

Some of our best staff are recruited by children returning from camp and urging their parents to join in the fun. We provide training in practical camping skills and also make sure that each camp has a balance of new and experienced staff so that each person can continue 'learning by doing'.

If you enjoy the open air, the company of children and being part of a community, come along to a weekend training camp, find out what's involved and see whether you enjoy it. Parents often have much needed experience in child care, younger staff have more energy for boisterous games and activities. Whether you're zany and imaginative or dull and dependable, we need your talents! Training camps last for two to three days.

New staff enquiries to:

*LISA HALLGARTEN  
75, ST. THOMAS'S RD, LONDON N4.*

## SONGBOOKS

Songbooks £1.50 plastic zip wallets 50p (handy A5/songbook size)  
(Please add £1 postage for first book and 40p for each additional one)

Send an SAE to: *Ruth Gleadow, 36 Tytherton Road, LONDON N19 4QA*

## EASTER AND EARLIER



## MOOR MUD

**CAMP CHIEFS: JEREMY COSSEY & HILARY CHIVALL**  
**ORGANISER: HILARY CHIVALL**  
**MONDAY 17 FEBRUARY TO SATURDAY 22 FEBRUARY**

## CAMP 1

**FEE: £135**  
**AGES: 8 TO 17.11**

Untried or experienced, caver or walker, everyone is welcomed to the fastness of Devon in winter. We will learn or develop the delights of wriggling through muddy holes with lights on our heads then stride out across Dartmoor to post our cards from Duckpool or other letterboxes under stones. This is two-bag camping - one for the caving hut and one for the moors. This activity is for experienced FSC campers.

**TRAVEL: TRAIN FROM PADDINGTON TO TOTNES**

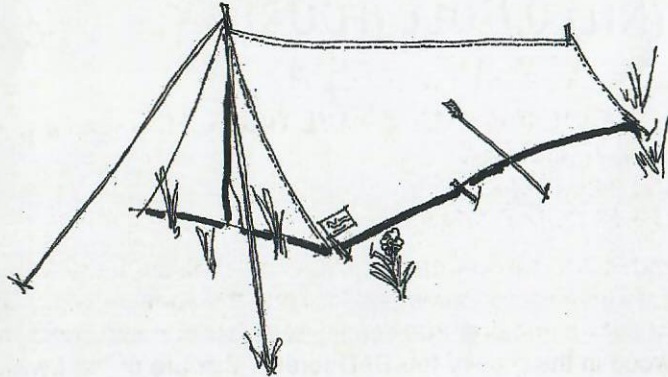
Please apply for the above camp on BLUE forms and send them to:  
Dinah Bornat, 9 Chesholme Road, London N16 0DP

## EASTER AT HODORE FARM

CAMP CHIEFS: RACHEL BARKER & JEREMY COSSEY  
ORGANISER: MIKE COASE  
FRIDAY 28 MARCH TO FRIDAY 4 APRIL

This will be a dynamic, traditional camp at Hodore Farm in Sussex. We will play, run and laugh together in the glorious frost and sunshine. With its river, open spaces and woodland, this site is a natural children's playground. Will you be lucky enough to be booked in for a week? Come prepared with two sleeping bags, waterproofs, hike footwear, warm jumpers, and a warm heart to help build a warm camp community.

TRAVEL: COACH FROM LONDON



## MAKIN' AND SHAKIN'

CAMP CHIEFS: DAVE MONK & CAROLINE WHALLEY  
ORGANISER: ANITA ANDREWS  
FRIDAY 28 MARCH TO FRIDAY 4 APRIL

Can seven days and nights change a lifetime? Is it safe to come down from the trees, will the lodge abandon tents for tepees? Are there are five ways to make fire? Can we dance til dawn comes home whatever the weather? What height is a tree-house? Danbury Wood will be our stage at Easter. Bring two sleeping bags, shorts, musical instruments, energy and an exploring outlook for a 'rapido' 168 hours!!

TRAVEL: COACH FROM LONDON

Please apply for the above camps on BLUE forms and send them to: Rod & Julie Gritten, Traian LLanfrothen, Penrhyndeudraeth, Gwynedd LL486SW

## CAMP 2

FEE: £120  
AGES: 8 TO 17.11

## MOBILE CAMPS

Lightweight tents, cooking stoves, fuel containers and billies are needed. A tent should have a flysheet, a sewn-in groundsheet and should ideally weigh less than 1.5 kg per person sharing it. You will normally be expected to supply at least one of the above items. Your camp chief will supply a complete specialised kit list and can advise you what to buy (or borrow).

When packing for walking mobiles, all your kit (with some space left for food) must fit **inside** your rucksack. Strong, waterproof walking boots with Vibram soles, or similar, are essential; they must be comfortable and be well walked-in. For canoeing mobiles, your kit has to be packed into several small waterproof bundles. Kitbags (maximum size 80 cm by 30 cm diameter) and a small frameless rucksack are best; anything larger will not fit into a canoe.

On cycling mobiles, all your kit must fit inside your panniers and saddle bags (leaving some space for food!)

## NOTES

**1** It is **ESSENTIAL** to have thoroughly waterproof rain wear. A PVC or heavy gauge proofed-nylon long anorak, cape or cagoule, with hood is recommended. Waterproof trousers are also useful and should be large enough to put on over boots. Very lightweight proofed-nylon is only showerproof and both this and plastic macs have a very limited life under camp conditions. Waterproofs should be tested under a shower or garden hose - if they leak your child will get wet every time it rains!

**2** Even at standing camps we do a lot of rough walking, so footwear must be comfortable. Children under eleven must have strong walking or at least training shoes. The heavier tread of walking boots gives better grip on wet grass. All campers will also need a pair of lightweight shoes for wearing around the camp. As it is often wet underfoot we recommend Wellington boots for all campers on standing camps, and consider them **ESSENTIAL** for the under-tens. Wellingtons should be large enough to accommodate thick socks. All footwear must be well walked-in before camp.

**3** At least one light top should be long sleeved with a collar to protect against sunburn.

**4** FSC holds a limited supply of small tents which we are prepared to lend to campers at standing camps. Those who wish to go on camping should aim to get a tent of their own. Less expensive traditional A-frame tents offer better protection than similarly priced dome tents.

**5** A separate groundsheet is useful for sleeping out and sitting on.

**6** The best bedding for camp is a sleeping bag which can be either natural (down and feather) or synthetic fibre filled. The latter is cheaper, can be washed, is heavier and bulkier but is adequate for our camps. All bags should be used with sheet linings. A blanket can provide extra warmth. Good insulation between sleeping bag and ground sheet can be provided by a Karrimat, as there is no room in small tents for camp beds or lilos. We recommend that two sleeping bags be used at Easter and autumn camps. All bedding should be packed into a thick polythene bag.

**7** A rucksack does not have to be large enough to hold everything but must be able to hold a sleeping bag, jumper, waterproofs and some food on hike. It must be comfortable and get the load as high and as close to the back as possible. Young children rapidly outgrow a small rucksack and a cheap un-framed pack is a better start than a poorly fitting framed rucksack. For extra kit, a canvas or nylon kitbag or zipped holdall is good; a suitcase is not suitable. Line all luggage with thick polythene sacks.

**8** Good lightweight torches are widely available. Torches will need to be carried on hike so don't bring a massive searchlight, and remember the spare batteries.

**9** A sheath knife or a single bladed penknife is useful; most other gadgets on a penknife will increase the price more than the usefulness. A lanyard, a chain or a length of string is strongly recommended for attaching the knife to a belt as a safeguard against loss.



# STANDING CAMPS KIT LIST

On camp we will be living in the elements. Being warm and dry on a wet day, or not suffering from sunburn after a hot one, can make a big difference to a child's enjoyment of camp. Please make sure your child is prepared for both.

## CLOTHING

- rainwear<sup>1</sup>
- footwear<sup>2</sup>
- 3 warm tops (sweatshirts etc)
- 3 pairs of trousers/jeans
- 2 warm woollen jerseys
- thick socks, two pairs
- pyjamas/track suit
- swimming costume
- sunhat
- woollen hat and gloves
- handkerchiefs/tissues
- shorts/dress/skirt \*



And depending on the length of camp, an appropriate number of...

- light tops<sup>3</sup> (T-shirts etc)
  - socks
  - underclothing

## EQUIPMENT

- lightweight tent<sup>4</sup>
- sleeping bag<sup>6</sup>
- rucsac<sup>7</sup>
- groundsheet<sup>5</sup> \*
- Ordnance Survey map(1:50000)\*
- compass \* (Silva type recommended\*)

## MISCELLANEOUS

- cloth bag containing:
  - plastic mug
  - deep plate
  - knife, fork and spoon
- sponge bag containing:
  - flannel, soap and nailbrush
  - toothbrush and paste
  - comb/hairbrush
- towels, two medium size
- torch and spare batteries<sup>8</sup>
- penknife<sup>9</sup>
- notebook and pencil
- paper and stamps (for writing home)
- plastic bin liners (for keeping things clean and dry)
- insect repellent \*
- sunblock \*
- musical instrument \*
- 'dressing up' clothes \*
- materials for making things (eg embroidery thread) \*

(\* optional )



## UNDER TENS

Our experience at camp convinces us that the under tens need extra underwear, socks and two pairs of pyjamas. Waterproofs should be large enough for the tops to fit comfortably over several layers, and the bottoms to fit over wellingtons.

Please ensure that every item is clearly marked to assist its safe return.

# SPRING WEEKEND CAMPS

## GRAYHILL FARM

CAMP CHIEF: HILARY CHIVALL  
 ORGANISER: ANDY MARTIN  
 FRIDAY 11 APRIL TO SUNDAY 13 APRIL

### CAMP 4

FEE: £45  
 AGES: 6.6 TO 17.11

We will discover this hilltop site in the far Western Marches of England in the darkness of Friday night. There's a lot of exploring to do by day and by night, singing, dancing and Merrymoot for Sunday lunch. Mid-April can be cold and wet so bring two sleeping bags (or one with a fleecy inner), lots of woolly jumpers, a full set of waterproofs and a pair of wellies - oh, and a way of finding North in the dark.

TRAVEL: TRAIN FROM PADDINGTON TO SEVERN JUNCTION / CALDICOTE

## GRIMBSY (NIL) 0, HULL (FOUR) 4 - A GURNING EXTRAVAGANZA

### CAMP 5

FEE: £50  
 CAMP LEADERS: THE VIC DOGGART & PAUL TRUSSLER  
 CO-OPERATIVE  
 AGES: 6.6 TO 14.11

ORGANISER: PAUL TRUSSLER  
 FRIDAY 2 MAY TO MONDAY 5 MAY

Hey! Eat, drink and make merry in the beautifully bluebell-carpeted woods of Danbury. Take away your winter blues and kick into the summer with a wicked hot shoe shuffle of sisters and brothers coming together to make some merry music and chop wood in the groovy fab BAD forest. Beware of the Swamp Thang. It'll be really happening for children of all shapes and sizes, abilities....all possibilities.

Pathfinders are welcome to assist as helpers on this camp for a fee of £10.

TRAVEL: COACH FROM LONDON

## VENICE WEEKEND

CAMP CHIEF & ORGANISER: RODDY BROOKS  
 SATURDAY 3 MAY TO MONDAY 5 MAY

### CAMP 6

FEE: £50  
 AGES: 8 TO 17.11

Another long weekend of walking (and a bit of riding) with a narrowboat on Midland canals. We spend two nights on a "standing site" and venture out for the days. On the last day we will visit the working Black Country Museum prior to canalling back to the station.

TRAVEL: TRAIN FROM EUSTON TO BIRMINGHAM

Please apply for the above camps on BLUE forms and send them to:  
 Dinah Bornat, 9 Chesholme Road, London N16 0DP

## HODSOCK PRIORY

CAMP CHIEF: JULIAN FORD  
ORGANISER: MARIAN ARMITAGE  
SATURDAY 3 MAY TO MONDAY 5 MAY

If home is where the heart is then bring your heart to camp and make it home for the weekend, we will try and do most things in the weekend that we would normally take two weeks to do.

TRAVEL: TRAIN FROM KINGS CROSS TO RETFORD

## CYCLE TRAINING

CAMP CHIEF & ORGANISER: DANIEL SIMON  
FRIDAY 16 MAY TO SUNDAY 18 MAY

A gentle introduction to having fun on bikes in the Suffolk countryside. There will be plenty of tea shop stops and almost no hills! No cycle experience necessary. All you need is a touring or mountain bike, panniers and a love of the open road with the wind in your hair. This activity is for experienced FSC campers. For information about borrowing or buying bicycles and equipment call Daniel on 0181 986 3844. Deduct £3 if travelling independently to and from Ipswich.

TRAVEL: TRAIN FROM LIVERPOOL ST. TO IPSWICH

## CANOE TRAINING

CAMP CHIEF: HAZEL POWELL  
ORGANISER: MARTIN SEARLE  
FRIDAY 16 MAY TO SUNDAY 18 MAY

Do you have an irresistible urge to get wet? Why not try canoeing? This is a good introduction for both children and adults to the way we camp on the canoe treks. Shopping and cooking in small groups and learning how to use Primus and Trangia stoves. The camp will be at Tempsford on the River Ivel, near its confluence with the Great Ouse, where we may encounter a Dragon Boat. All campers must be able to swim 50 metres. This activity is for experienced FSC campers.

TRAVEL: TRAIN FROM KINGS CROSS TO SANDY

## CAMP 7

FEE: £45  
AGES: 6.6 TO 17.11

## CAMP 8

FEE: £35  
AGES: 12 TO 17.11

## CAMP 9

FEE: £50  
AGES: 10 TO 17.11

Please apply for the above camps on BLUE forms and send them to:  
Dinah Bornat, 9 Chesholme Road, London N16 0DP

# PREPARING FOR CAMP

## EQUIPMENT

You probably already own most of the things you need for a standing camp. Warm, well-worn clothing is required. The only essential extras are a sleeping bag and really effective water-proofs; we don't always take shelter when it rains. We ask that families who continue to camp with us try to supply at least one two-person tent. Full details of what to bring to standing camps are given in the kit list on page 26. For mobile camps some more specialist equipment may be required; a few notes appear on page 27, but full details will be sent to you by your camp organiser.

## TETANUS

We ask that all campers are fully protected against tetanus well before camp. The pre-school tetanus course lasts for ten years and the school-leaving booster lasts until 25.

## LIFE JACKETS

We make it a firm policy that life jackets or buoyancy aids are worn when children are canoeing, sailing or rafting with FSC. We will provide them.

## TRAVEL

Escorted parties travel between London and our camps; the expected departure and destination stations are listed under each camp. Final details of times and meeting places will be sent in a pre-camp circular a few weeks before camp.

Campers may arrange to join the escorted party at any station at which the train stops, but those doing so will be asked to purchase their own tickets to and from the destination. A travel refund will be made.

## INSURANCE

Forest School Camps insures for its liabilities at law. While all possible care is taken to avoid accidents, Forest School Camps does not insure for personal accident or for loss or damage to personal property. Those who are not already insured for **personal accident** and for **all risks** in respect of personal effects, may wish to make their own arrangements.

Children and staff of camps which travel to foreign countries, including the Republic of Ireland, are covered by a comprehensive travel policy which includes medical treatment as well as loss and damage to personal effects, subject, of course, to the usual limitations and exclusions. The cost of this insurance is included in the camp fee. Details of the insurance scheme can be provided on request. Forest School Camps is not able to insure you if you have not been permanently resident in the United Kingdom for 12 months prior to effecting the insurance. In such cases you must provide us with evidence of suitable cover effected in your country of residence and you will receive a refund equivalent to the insurance premium that would have been paid on your behalf.

# FSC REGIONAL GROUPS

Over the years, FSC staff have set up informal regionally based groups which meet and run weekend camps occasionally. If you wish to join in the activities of one of these groups please contact the relevant person. SAEs are appreciated.

## PEAK REGION

As our name suggests, we camp in the Peak District, in Derbyshire. This year we will be running at least two weekend camps: one in May and one in the Autumn. We will take full advantage of the locations, while having plenty of time for traditional FSC activities. Although you will have to make your own way there, you will be made very welcome. Further details from:

*PETER O'DONOGHUE*  
23 MOTTERSHEAD ROAD,  
WOODHOUSE PARK, MANCHESTER  
M22 9QG

## WESTERN REGION

We hope to run occasional camps for people in the Gloucester, Avon and Somerset area. If you are interested please contact:

*ANDY FREEDMAN*  
39, SLAD ROAD, STROUD,  
GLOUCS. GL5 1QR

## EASTERN REGION

We are hoping to run two or three traditional FSC-style weekends in January, March or May. If you are interested please contact:

*COLIN MUTTY*  
C/O 10 NORTH PARADE  
SOUTHWOLD  
SUFFOLKIP18 6LP

DO YOU WANT TO BUY CLOTHING WITH THE DISTINCTIVE  
FSC LOGO?

T-SHIRTS

SWEATSHIRTS

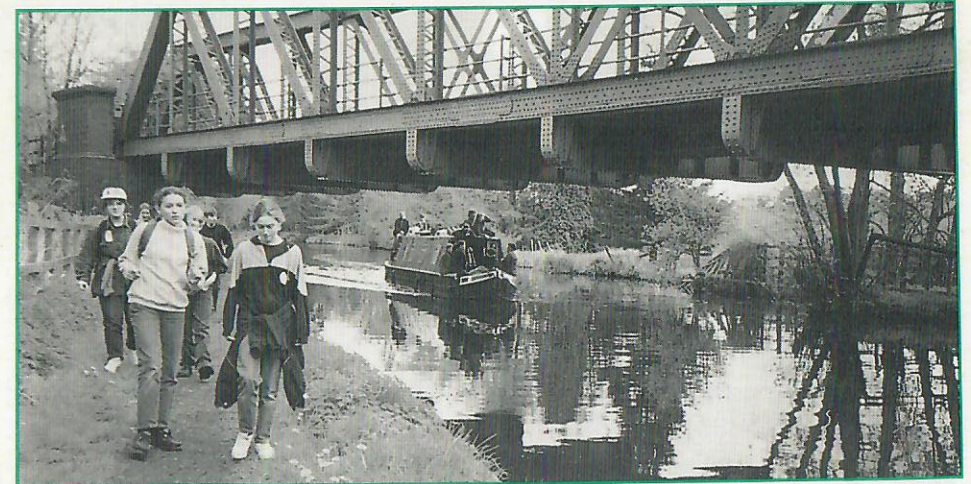
HATS



To get a price list  
please send an SAE  
to:

*LEILA HUNT*  
10A GRANVILLE  
ROAD  
HOVE BN3 1TG

# WHITSUN CAMPS



## MORE MAY MAGIC

CAMP CHIEFS: JEREMY COSSEY & ANNIE HOLLOWAY  
ORGANISER: ANNE HARRISON  
SATURDAY 24 MAY TO SATURDAY 31 MAY

## CAMP 10

FEE: £140  
AGES: 6.6 TO 17.11

A new site at Magdalen Organic Farm in Somerset offers us the chance once more to dance in the fields, to sing in the sunshine and still be able to read that map in the rain! The emphasis will be to build on skills and creativity and above all, to have fun.

TRAVEL: TRAIN FROM PADDINGTON TO CREWKERNE

## WHITSUN IN WEST CORNWALL

CAMP CHIEFS: ROBIN TOOGOOD AND JUDE BISHOP  
ORGANISER: JUDE BISHOP  
SATURDAY 24 MAY TO SATURDAY 31 MAY

## CAMP 11

FEE: £140  
AGES: 6.6 TO 17.11

Tucked amongst hidden creeks, winding lanes and woodland, we'll make a friendly home, warm fires, create giant models, explore the night and pack the whole range of standing camp activities into one week. The distinct call of the surf on secret coves and rugged cliffs will beckon the adventurous of heart...

TRAVEL: TRAIN FROM PADDINGTON TO TRURO/PLYMOUTH

Please apply for the above camps on BLUE forms and send them to:  
Mary Brown, 32 Castellain Road, London W9 1EZ

## GO WILD IN THE WEST

CAMP CHIEF: CAROLYN THOMPSON  
ORGANISER: MARILYN HALL  
SATURDAY 24 MAY TO SATURDAY 31 MAY

We will make an alchemical mix of earth, water, fire, air, space, people, fun, good food, work and learning. Who knows what the melting pot of FSC will create with such ingredients? Come with an open mind and an open heart.

TRAVEL: TRAIN FROM PADDINGTON

## MID-WALES WALKING MOBILE

CAMP CHIEF: JENNY DINGLE & JOHN HARRISON  
ORGANISER: JO BROADHURST  
SATURDAY 24 MAY TO SATURDAY 31 MAY

We will walk up mountains...walk to beautiful waterfalls...walk and enjoy each other's company...walk at least eight miles a day with all our belongings on our backs...walk to high-up lakes and swim...walk and practise our map reading...and sometimes just walk...maybe not even see a shop all week! So, to enjoy this camp you must like walking and wild places. This activity is for experienced FSC campers.

TRAVEL: TRAIN FROM EUSTON TO MACHYNLLETH

## CANOEING UP AND OVER

CAMP CHIEF: HAZEL POWELL  
ORGANISER: SIMON COOK  
SATURDAY 24 MAY TO SATURDAY 31 MAY

Breaking with the FSC downhill canoeing tradition of 25 years standing, we shall start going uphill on the Newport to Brecon canal from Pontypool to Brecon, then a portage (motor assisted) from there to Glasbury-on-Wye for the downhill course to Hereford, or as far as we can get. This canal canoeing should give us panoramic views and also serve as a quiet introduction to the sport for newcomers. This activity is for experienced FSC campers. All campers must be able to swim 50 metres.

TRAVEL: TRAIN FROM PADDINGTON TO NEWPORT,  
RETURN FROM HEREFORD TO PADDINGTON

Please apply for the above camps on BLUE forms and send them to:  
Mary Brown, 32 Castellain Road, London W9 1EZ

## CAMP 12

FEE: £140  
AGES: 6.6 TO 17.11

## CAMP 13

FEE: £140  
AGES: 10 TO 17.11

## CAMP 14

FEE: £165  
AGES: 11 TO 17.11

## GRAYHILL WORK CAMPS

CAMP CHIEF & ORGANISER: STUART PEACHY  
EASTER: FRIDAY 21 MARCH TO THURSDAY 27 MARCH  
SUMMER: SUNDAY 22 JUNE TO SUNDAY 6 JULY

CAMP 40  
& 41  
AGES: 17+

Overlooking the Thames Estuary and sheltered by Wentwood Forest, the fifteen acres of Grayhill are a patchwork of woodland pastures, ancient fields and farm buildings. The project is attempting to restore one of the rarest of habitats, traditional hand-managed mixed farming countryside. Decaying hedges are being relaid, orchards replanted with species all dating back at least 350 years, dry stone walls are being rebuilt, hay meadows mown to clear encroaching bracken, small woods replanted, and traditional buildings restored. Working alongside 'regulars' you can discover a range of authentic 17th century skills and crafts, from coppicing to carpentry.

## RUSHALL MANOR WEEKENDS

CAMP CHIEF: RAD WAGON  
ORGANISER: JOEL SMITH  
SPRING: SATURDAY 12 TO SUNDAY 13 APRIL  
AUTUMN: SATURDAY 25 TO SUNDAY 26 OCTOBER

CAMP 42  
& 43  
AGES: 17+

The John Simmonds Trust continues its rural community education projects in the Golden Valley site at Pangbourne near Reading. Forest School Camps plans two short maintenance camps to aid their progress.



## WORK CAMPS

At camp we may take the fabric of the countryside for granted, but work camps give us the chance to redress that balance a little. Work camps involve all kinds of tasks: coppicing, hedging, path laying, and repairing or reconstructing traditional farm buildings. FSC work camps are cheap, convivial and confidence-building. The camps are generally planned for the over-seventeens, with no upper age limit of course. They are run on similar lines to small standing camps.

There are no special qualifications for volunteers. Everyone can contribute to ensuring that a workcamp is an enjoyable and memorable experience. In fact it's a great opportunity to try your hand at glee or catering as well as woodcraft.

### HOW TO APPLY

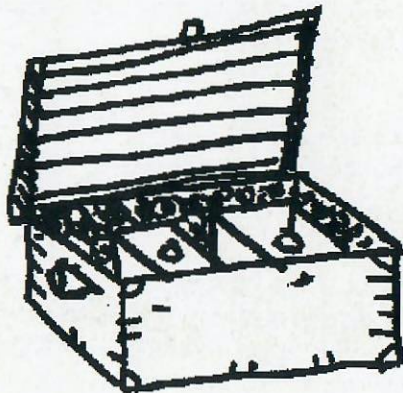
There are no fees or expenses. You travel independently to the camp site or collection point and will be asked to contribute the appropriate amount for the running costs of the camp. This is usually at least £3.00 per day. You need a tent, very old clothes and waterproofs.

Week-long camps may qualify for the residential requirement of the Duke of Edinburgh Award scheme (Gold). Volunteers from abroad and older campers new to FSC are especially welcome.

Information and enrolment forms may be obtained from:

**FSC WORK CAMPS SECRETARY**  
UNITY STACK  
1 CHURCH VIEW  
CHURCH HILL  
LYDBROOK  
GLOS. GL17 9SN

(An A5 SAE appreciated)



## EARLY SUMMER CAMPS

### ASHDOWN FOREST ADVENTURE

**CAMP LEADERS: JENNY DINGLE CO-ORDINATING &  
THE BETA GROUP**

**ORGANISER: MIRABEL FOSTER**

**FRIDAY 13 JUNE TO SUNDAY 15 JUNE**

**CAMP 15**

**FEE: £45**

**AGES: 8 TO 17.11**

This weekend will be packed with walking, map-reading games, learning to look after our feet, cooking meals on stoves, campfires and more walking. This activity is for experienced FSC campers.

**TRAVEL: TRAIN FROM VICTORIA TO EAST GRINSTEAD**

### CYCLE TRAINING (JUNIOR)

**CAMP CHIEF & ORGANISER: DAVE MONK**

**FRIDAY 11 JULY TO SUNDAY 13 JULY**

**CAMP 16**

**FEE: £35**

**AGES: 10 TO 14.11**

A cycle weekend for the novice rider. Riding only a few miles each day between sites, you can enjoy the pleasures of quiet country lanes and off-road routes, plus all camp activities. No specialised equipment is needed for this camp, but your bicycle must be fitted with a rear carrying rack, to carry your waterproofs and lunch. This is a taster weekend of fun and freewheeling. This activity is for experienced FSC campers.

**TRAVEL: TRAIN FROM LIVERPOOL STREET**

### A WEEKEND AT HODORE

**CAMP CHIEF: PHILLY NOLAN**

**ORGANISER: BRENDA HATCHER**

**FRIDAY 11 JULY TO SUNDAY 13 JULY**

**CAMP 17**

**FEE: £45**

**AGES: 6.6 TO 14.11**

This will be a weekend of traditional FSC camping at a site we have come to love. Lots of singing and dancing will be on the agenda, with everything else we can pack into a weekend. Come prepared with songbooks, musical instruments and lots of ideas. This site is ideally suited for campers of limited mobility or with physical disabilities.

- Pathfinders are welcome to assist as helpers on this camp for a fee of £20

**TRAVEL: COACH FROM LONDON**

Please apply for the above camps on BLUE forms and send them to:  
Dinah Bornat, 9 Chesholme Road, London N16 0DP

## MAIN SUMMER CAMPS



### SUMMER IN SUSSEX

**CAMP CHIEFS: JACK MCQUAIL & CHRIS DENT**  
**ORGANISER: VIC DOGGART**  
**WEDNESDAY 30 JULY TO FRIDAY 8 AUGUST**

**CAMP 18**  
**FEE: £135**  
**AGES: 6.6 TO 17.11**

Join us in this beautiful site at Hodore Farm in Sussex where we will enjoy adventures in the woods and entertain each other with songs and tales. We will try to hone our camping skills in a cheerful, communal setting. This camp operates with a high staff to child ratio and is specifically for children with learning difficulties.

**TRAVEL: COACH FROM LONDON**

Please apply for the above camp on **YELLOW** forms and send them to: Vic Doggart, 231 York Way Court, Treaty Street, London N1 0UG

### RUSHALL FAMILY CAMP

**CAMP 36**

**CAMP CHIEF: LORNA ENGLISH**  
**ORGANISER: ADRIAN MATTHEWS**  
**SATURDAY 3 MAY TO MONDAY 5 MAY**

With the days stretching into summer this will be a gentle weekend, especially to give new and young children a taste of FSC. The woods will be alive with blue-bells and wildlife. There are massive oak trees for swings and ropes, a duck-pond and ancient barns. By the lambing shed there will still be orphan lambs which we can hold and feed.

### RUSHALL FAMILY CAMP

**CAMP 37**

**CAMP CHIEF & ORGANISER: ADRIAN MATTHEWS**  
**FRIDAY 6 JUNE TO SUNDAY 8 JUNE**

This gentle site belonging to the John Simmonds Trust is well suited to small children and even camp-shy parents! The camping field has spreading oak trees and a duck pond. Nearby is a shallow river and woodlands with waymarked walks where wildlife may be encountered.

### WILTSHIRE DOWNS FAMILY CAMP

**CAMP 38**

**CAMP CHIEF: HAZEL POWELL**  
**ORGANISER: ADRIAN MATTHEWS**  
**FRIDAY 13 JUNE TO SUNDAY 15 JUNE**

Camping right up on the Downs by Stockton Earthworks, with breath-taking views, this relaxed camp will provide a chance to introduce young children to camping and for more senior members to loll about. The energetic can tackle digging a lat through a layer of flint - crowbar provided - or follow the Roman Road west in search of Snail-creep Hanging or east to Hanging Langford Camp, another Iron Age settlement.

### FARNDALE FAMILY CAMP

**CAMP 39**

**CAMP CHIEF: STEVE FLETCHER**  
**ORGANISER: DAVID & HILARY HUGHES**  
**THURSDAY 24 JULY TO SUNDAY 27 JULY**

This camp is set at the top of Farndale in the North Yorks Moors. We will build an active, creative and caring community with a wide range of activities, both new and traditional. Bring your skills and ideas or simply your enthusiasm! Campers of all ages, including unaccompanied adults are welcome. Priority for places on this camp will go to those living North of the Home Counties.

## ASSOCIATE MEMBERSHIP OF FSC

Parents and supporters who become associate members of FSC receive news of FSC's activities in two newsletters a year and a copy of the FSC magazine when it is published. There are weekend camps especially for associate members and their families. The annual subscription is £2.50. The associate members' Secretary will send you a form and further details on request.

Associate members and FSC staff are all welcome at family camps, with or without their children. To apply for a family camp please use the form sent to all Associate Members, or write directly to the appropriate organiser. There is no age limit, upper or lower, and these camps are particularly suit-

### ASSOCIATE MEMBERS SECRETARY

PETER O'DONOGHUE  
23 MOTTERSHEAD RD.  
WOODHOUSE PARK  
MANCHESTER M22 9QG

able for very young children who may be camping for the first time. Supervision of the children is the responsibility of the parents, and there is no organised travel, allowing us to keep the fees to a minimum. Parents and children share in the communal cooking, with food and equipment provided by the camp. There will be many of the usual FSC activities like rally, singing around the campfire, games, walks and whatever the site and our ingenuity can produce.

*A parent who becomes an associate member or attends a family camp does not give their child any priority on the waiting list to attend any of our main camps.*

**ORGANISER**  
ADRIAN MATTHEWS  
6 ALMACK ROAD,  
LONDON E5 ORL

## GRAYHILL FAMILY WORK CAMP

### CAMP 35

**CAMP CHIEFS: AGGIE FORSTER & JIM CRAFTS**  
**ORGANISER: ADRIAN MATTHEWS**  
**FRIDAY 21 MARCH TO SUNDAY 23 MARCH**

This camp will coincide with the first weekend of the Grayhill Easter work camp. The garden will need manuring and some early planting if the moon is right. Hedging, fencing, weeding seem endless. At Grayhill farm the barn walls grow ever higher and work should have begun on the dairy. We can walk over the hill to see the piglets and startle at the cat's eyes in the moonlight. Come and join us for hardwork, stars, fires and an Easter egg hunt. A camp for associate families who have done one or two weekends and wish to branch out a bit. If you like it you may stay until Thursday.

## TEIFISIDE ONE

**CAMP CHIEF: JULIA HOLMES**  
**ORGANISER: STEVE PRESTON**  
**WEDNESDAY 30 JULY TO TUESDAY 12 AUGUST**

**CAMP 19**  
**FEE: £215**  
**AGES: 6.6 TO 17.11**

Beware! This camp intends to engage your minds as well as your bodies! There will be loads of the traditional bits but in addition there will be certain "problems" that may require your attention. The solving of these problems could lead to rewards such as a cooked supper (as opposed to a raw one), or a warm night (as opposed to a draughty one). You might perhaps find that basic wood-craft skills come in useful, on the other hand divine inspiration might be needed. Whatever happens you will certainly need the help of friends tall and small.

**TRAVEL: TRAIN FROM PADDINGTON TO SWANSEA**

## FARNDALE ONE

**CAMP CHIEFS: ZOE HANCOCK & FRAN BURSTALL**  
**ORGANISER: JEAN NAPIER-FORD**  
**WEDNESDAY 30 JULY TO TUESDAY 12 AUGUST**

**CAMP 20**  
**FEE: £215**  
**AGES: 6.6 TO 17.11**

Take one beautiful hillside farm, nestling on the edge of the North Yorkshire Moors. Add tents and campers. Mix in walking, singing, dancing (day and night!), cooking, playing, sharing, learning and living. Stir in generous helpings of rain, sun, mud and sand. Cook for two weeks and you have our recipe for Farndale One. Join us.

**TRAVEL: TRAIN FROM KINGS CROSS TO YORK**

## HARLECH ONE

**CAMP CHIEF: GILES VELLACOTT**  
**ORGANISER: JANET ROTHERY**  
**WEDNESDAY 30 JULY TO TUESDAY 12 AUGUST**

**CAMP 21**  
**FEE: £215**  
**AGES: 6.6 TO 17.11**

A part-wooded site with streams and mountains, beautiful and secluded. The camp will, as always, try to create a caring community involving everyone. We will learn new camping skills and draw on any particular interests of campers to inspire other activities. Campfires, song and dance, challenging hikes, games, drama, fun, making friends. Everyone will be able to go home and say they did something they didn't know they could do before.

**TRAVEL: TRAIN FROM EUSTON TO LLANDUDNO**

Please apply for the above camps on YELLOW forms and send them to:  
Ruth Steed, 14 Highfields, Forest Row, East Sussex RH18 5AJ

## RADNOR ONE

2

CAMP CHIEFS: LESLIE HOLDEN & ANDY DOYLE  
ORGANISER: JUDITH COOKE  
WEDNESDAY 30 JULY TO TUESDAY 12 AUGUST

## CAMP 22

FEE: £215  
AGES: 6.6 TO 17.11

This will be a traditional standing camp set amongst the beautiful hills of mid-Wales. This site on the bank of the river Ithon is good for bathing and has all the natural ingredients for outdoor play. We aim to make an active, creative and caring community from the skills and spirit everyone can give. Come prepared to enjoy the summer (mud or sun) and to live and work in harmony with ourselves and our neighbours.

TRAVEL: TRAIN FROM PADDINGTON TO WORCESTER

## BORROWBECK ONE

CAMP CHIEFS: ANDY FREEDMAN AND NICO BROWN  
ORGANISER: ALI COMPTON  
WEDNESDAY 30 JULY TO TUESDAY 12 AUGUST

## CAMP 23

FEE: £215  
AGES: 6.6 TO 17.11

The most important thing we'd like to say to you if you're thinking about coming on this camp is that it's for people who can listen. We'll sing and shout and play music and say what we think while having fun living in an exciting place. We'll do the things that make camp special. But we're going to make listening - to each other and to the sounds of this magic place - the best part of the camp. This way we'll never forget it.

TRAVEL: TRAIN FROM EUSTON TO OXENHOLME

## LONGTOWN ONE

CAMP CHIEFS: RODDY BROOKS & MAGGIE HUDSON  
ORGANISER: THELMA JONES  
WEDNESDAY 30 JULY TO TUESDAY 12 AUGUST

## CAMP 24

FEE: £215  
AGES: 6.6 TO 17.11

A large traditional standing camp in this well-loved site facing the long mountain and Wales (which is where all the rain is meant to fall before it gets to us. Wish on.) We have delightful rolling valleys around us and plenty of scope for a full range of activities on site. Please come properly prepared for wet weather but hope it does all fall on Wales.

TRAVEL: TRAIN FROM PADDINGTON TO GREAT MALVERN

Please apply for the above camps on YELLOW forms and send them to:  
Ruth Steed, 14 Highfields, Forest Row, East Sussex RH18 5AJ

## AUTUMN AND LATER...

### WRIGGLING AND WALKING ON THE MENDIPS

## CAMP 33

CAMP CHIEF: GILL EMERSON  
ORGANISER: SUZANNE EMERSON  
FRIDAY 17 OCTOBER TO THURSDAY 23 OCTOBER

FEE: £140  
AGES: 8 TO 17.11

We will be exploring the Mendip Hills from above and below ground. Come and discover the world of rocks under your feet and learn a bit about how it came to be. We will be camping from a hut but the weather is likely to be very wet and cold so come prepared with wellies, woolies and waterproofs. First-time cavers more than welcome but sorry, no first-time campers.

TRAVEL: COACH FROM WEST LONDON

### NEW YEAR ON THE HILL

## CAMP 34

CAMP CHIEF: AGGIE FORSTER  
ORGANISER: HELEN GROVE-WHITE  
TUESDAY 30 DECEMBER 1997 TO SATURDAY 3 JANUARY 1998

FEE: £135  
AGES: 8 TO 17.11

Let us celebrate FSC's 50th year with big fires, fireworks and a midnight walk to the beacon. This camp will be friendly to campers who have not camped in winter before, so long as they read their kit list. Singing and storytelling will be important; telling tales of the day's activities, last year's lustrous tales and moral tales of camps gone by "when I was young!"

TRAVEL: TRAIN FROM PADDINGTON TO SEVERN JUNCTION / CALDICOTE

Please apply for the above camps on BLUE forms and send them to:  
Dinah Bornat, 9 Chesholme Road, London N16 0DP



## RADNOR TWO

**CAMP CHIEFS: HAZEL POWELL & MALCOLM KEITH**  
**ORGANISER: PENNY WILES**  
**THURSDAY 14 AUGUST TO WEDNESDAY 27 AUGUST**

This will be a full sized standing camp on the banks of the River Ithon not far from Llandrindrod Wells. As always we will build a friendly community in which everyone feels at ease. To help this along some activities will be run in clans earlier on, to encourage everyone to get to know two sets of people quickly - their age groups and their clan. All the usual FSC activities will be squeezed into a full but flexible programme.

**TRAVEL: TRAIN FROM PADDINGTON TO WORCESTER**

## FARNDALE TWO

**CAMP CHIEF: RAD WAGON**  
**ORGANISER: DAVID BERG**  
**THURSDAY 14 AUGUST TO WEDNESDAY 27 AUGUST**

Why are we in a field? Who are we? What is a field? Where is the playground? How do I do that? What is dangerous? Can I do it? Do I like it? Why do we go on hike? How does a fire light? When does the sun shine? When do we go home? Are we warm? Who answers the questions?

Activities: song, washing up, creativity, lat digging, drama, wooding.

Method: full democratic involvement, engendered group spirit.

**TRAVEL: TRAIN FROM KINGS CROSS TO YORK**

## HARLECH TWO

**CAMP CHIEF: DAN GRITTEN**  
**ORGANISER: ANGHARAD WALTERS**  
**THURSDAY 14 AUGUST TO WEDNESDAY 27 AUGUST**

We aim to build a caring community in this beautiful corner of Snowdonia. Come prepared for lots of singing, dancing, walking, talking and music making. There will be a strong emphasis on woodcraft skills for both young and older members of the lodge. So come ready with plenty of energy and enthusiasm for a fortnight to remember. Please bring musical instruments. The catering on this camp will be vegetarian.

**TRAVEL: TRAIN FROM EUSTON TO LLANDUDNO**

Please apply for the above camps on YELLOW forms and send them to:  
Ruth Steed, 14 Highfields, Forest Row, East Sussex RH18 5AJ

## CAMP 30

**FEE: £215**  
**AGES: 6.6 TO 17.11**

## CAMP 31

**FEE: £215**  
**AGES: 6.6 TO 17.11**

## CAMP 32

**FEE: £215**  
**AGES: 8 TO 17.11**



## BRAVEHEART II

**CAMP CHIEFS: DINAH BORNAT & JOE HALLGARTEN**  
**ORGANISER: JUDY STOKER**  
**WEDNESDAY 30 JULY TO TUESDAY 12 AUGUST**

## CAMP 25

**FEE: £230**  
**AGES: 9 TO 12.11 & 16 TO 17.11**

If you like hike, but hate the thought of mobiles, this could be the camp for you! A gentle adventure, exploring the friendly hills and white beaches of East Scotland. We'll spend our last few days together on one site, enjoying a traditional FSC finale and gazing at meteor showers. Children new to mobiles are welcome to apply. Older Pathfinders will be encouraged to play an active role in the running of the camp. We will have a day out in June to share ideas and check equipment. This activity is for experienced FSC campers.

**TRAVEL: TRAIN FROM KINGS CROSS**

Please apply for the above camp on YELLOW forms and send them to:  
Ruth Steed, 14 Highfields, Forest Row, East Sussex RH18 5AJ

## CLARE AND KERRY MOBILE

CAMP CHIEF & ORGANISER: PETER TAYLOR  
WEDNESDAY 30 JULY TO WEDNESDAY 13 AUGUST

### CAMP 26

FEE: £230  
AGES: 11 TO 17.11

We aim to lose ourselves for a fortnight in this remote and beautiful corner of Ireland. We will walk the length of Co. Clare and part of Co. Kerry, finishing by the sea at Tralee, so we will have plenty of time for swimming, climbing and other activities. Lightweight camping gear is essential. Advice will be given in the pre-camps circular, or ring the camp chief with any questions. This activity is for experienced FSC campers.

TRAVEL: TRAIN FROM EUSTON TO HOLYHEAD

## YOUNG PRETENDER CYCLE MOBILE

CAMP CHIEFS: WILL COPPOLA & KATH MCQUAIL  
ORGANISER: KATH MCQUAIL  
WEDNESDAY 13 AUGUST TO WEDNESDAY 27 AUGUST

### CAMP 27

FEE: £230  
AGES: 13 TO 17.11

Join us for an exciting journey by bicycle from Glasgow to Inverness along the recently developed Sustrans route. On the way we intend to swim in lochs, climb mountains (perhaps on foot) and have adventures. Despite spending much time in the saddle we will not forget the things that make a great FSC camp including fires, songs and talk. We hope for a last night at Culloden where the Young Pretender was defeated in the last battle fought on British soil.

- All campers must have camped with FSC previously. Beginners to cycling are welcome, but if you have never cycled with FSC we strongly recommend that you attend one of the two 1997 cycle training weekends (Camps 8 & 16)

- You will need a touring or mountain bike with at least ten gears with a carrier and panniers. For advice on bikes and equipment, and borrowing or purchasing of same, please ring Will Coppola or Kath McQuail on 0171 607 0501.

TRAVEL: TRAIN FROM EUSTON TO GLASGOW

Please apply for the above camps on YELLOW forms and send them to:  
Ruth Steed, 14 Highfields, Forest Row, East Sussex RH18 5AJ

## LONGTOWN TWO

CAMP CHIEF: GILBERT ROPER  
ORGANISER: CLEMENCY SPENCER  
THURSDAY 14 AUGUST TO WEDNESDAY 27 AUGUST

### CAMP 28

FEE: £215  
AGES: 6.6 TO 17.11

This will be a full-sized camp in the foothills of the Black Mountains, including people of all ages and abilities. Whilst we hope for an exciting range of activities, perhaps including woodcraft, games, shelter building, swimming, sweat lodges and song, don't expect to have this all planned out for you. Bring ideas along with enough energy and enthusiasm to put them forward and have them acted upon. This camp could either be stupefyingly dull or stupendously amazing - it's up to you. Blue Skies, sunshine etc. all on order.

TRAVEL: TRAIN FROM PADDINGTON TO GREAT MALVERN



## BORROWBECK TWO

CAMP CHIEFS: DAPHNE CARRÉ & TINA USHERWOOD  
ORGANISER: JANICE OAKLEY  
THURSDAY 14 AUGUST TO WEDNESDAY 27 AUGUST

### CAMP 29

FEE: £215  
AGES: 6.6 TO 17.11

We will celebrate FSC's 50th birthday in the beautiful Borrowdale Valley which lies between the Lake District and the Howgill Fells, both offering exciting opportunities for hikes. The site is bordered by a river, so there will be plenty of splashing around in water and the chance to build bridges and dams. We aim to be creative and to establish a community where there is a strong theme of "caring" for each other. Come and join us for a very special birthday camp, and let us have your suggestions as to how we should celebrate.

TRAVEL: TRAIN FROM EUSTON TO OXENHOLME

Please apply for the above camps on YELLOW forms and send them to:  
Ruth Steed, 14 Highfields, Forest Row, East Sussex RH18 5AJ